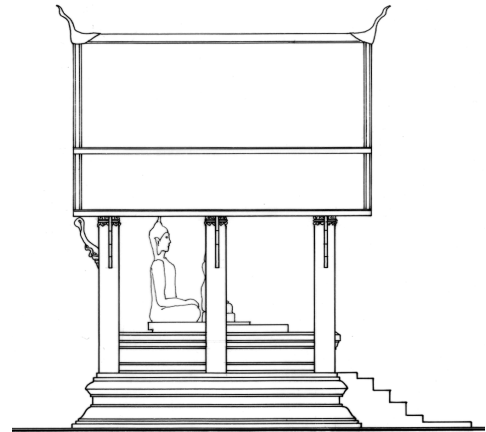
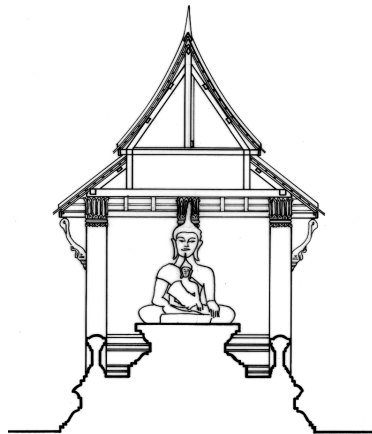


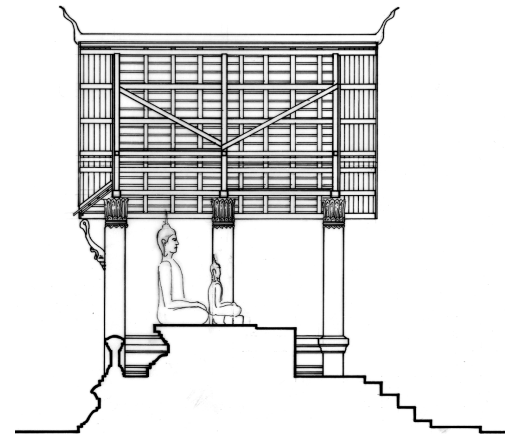
ຮູບຕ້ານໜ້າ  
FAÇADE Nord - Est



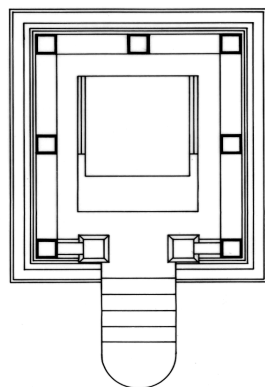
ຮູບຕ້ານຂ້າງຂວາ  
FAÇADE Nord - Ouest



ຮູບຕັດທາງຂວາງ  
COUPE TRANSVERSALE



ຮູບຕັດທາງຍາວ  
COUPE LONGITUDINALE



ແຜນຜັງ  
PLAN

ວັດ ສົບ  
VAT SOP



ພາກທີ 2 : ອາຄານສ່ວນປະກອບຂອງວັດ

PARTIE 2 : BATIMENTS COMPOSANT UN MONASTERE

ຫ້ອງການມໍລະດົກ

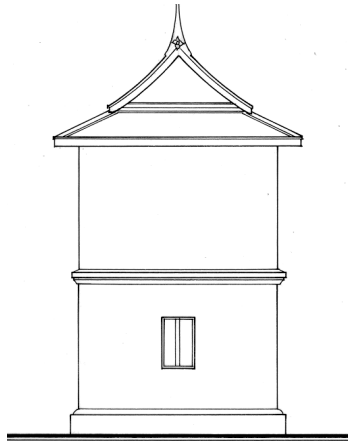
La Maison du Patrimoine

ຫຼວງພະບາງ ຕືນອຸມະລະດົກໂລກຂອງອົງການ ອຸຍແນສະໂກ

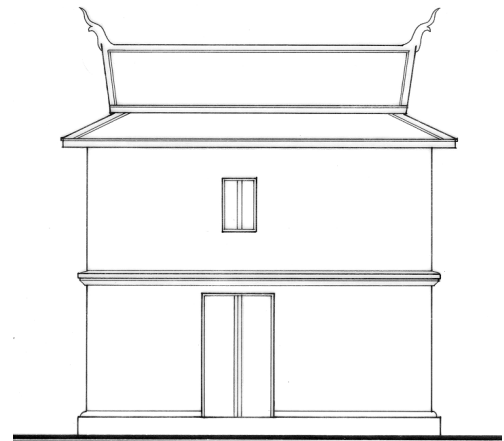
Luang Prabang, Ville du Patrimoine mondial de l'UNESCO

ແຜນຜັງປົກປັກຮັກສາ ແລະ ເຮັດໃຫ້ມີຄຸນຄ່າ

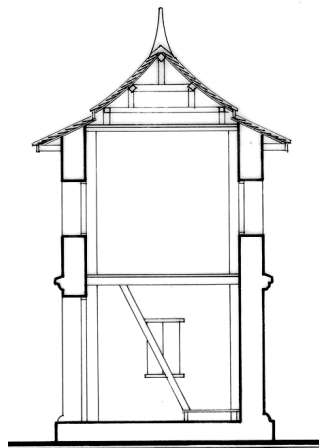
PLAN DE SAUVEGARDE ET DE MISE EN VALEUR



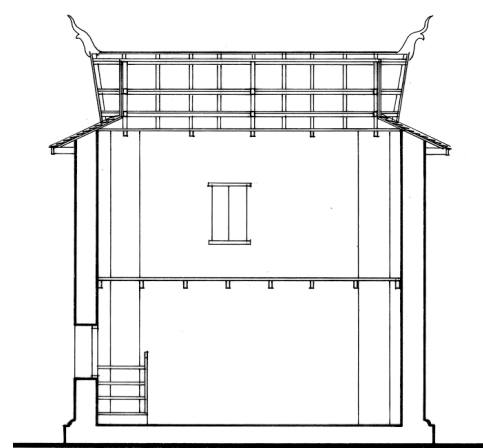
ຮູບຕ້ານ ທິດຕາເວັນອອກ ສ່ຽງໃຕ້  
FAÇADE Sud - Est



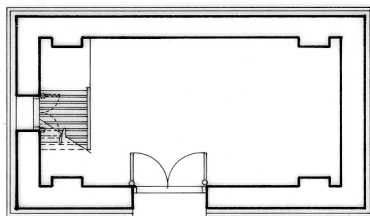
ຮູບຕ້ານ ທິດຕາເວັນຕົກ ສ່ຽງໃຕ້  
FAÇADE Sud - Ouest



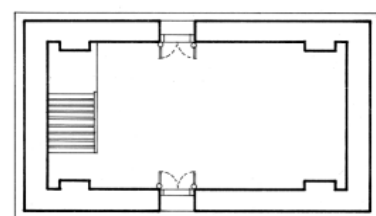
ຮູບຕັດທາງຂວາງ  
COUPE TRANSVERSALE



ຮູບຕັດທາງຍາວ  
COUPE LONGITUDINALE



ແຜນຜັງ ຊັ້ນ 0  
PLAN REZ DE CHAUSSEE



ແຜນຜັງ ຊັ້ນ 1  
PLAN ETAGE

ວັດ ສີລິມຸງຄຸນ  
VAT SIRIMOUNGKHOUN



ພາກທີ 2 : ອາຄານສ່ວນປະກອບຂອງວັດ

PARTIE 2 : BATIMENTS COMPOSANT UN MONASTERE

ຫ້ອງການມໍລະດົກ

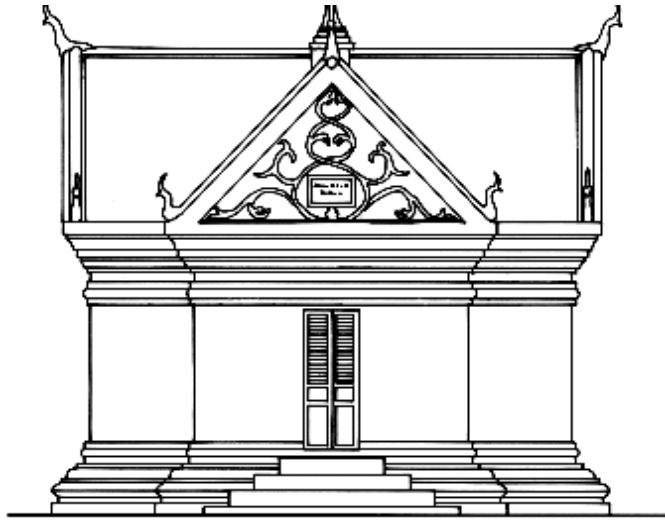
ຫຼວງພະບາງ ເມືອງມໍລະດົກໂລກຂອງອົງການ ອຸຍແນສະໂກ

ແຜນຜັງປົກປັກຮັກສາ ແລະ ເຮັດໃຫ້ມີຄຸນຄ່າ

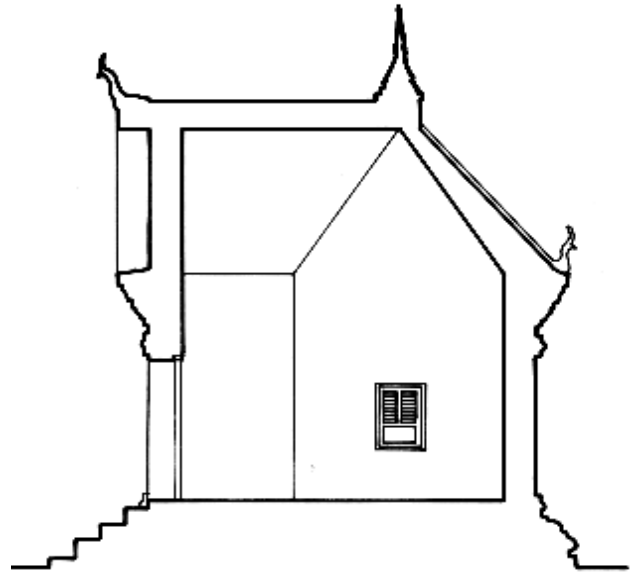
La Maison du Patrimoine

Luang Prabang, Ville du Patrimoine mondial de l'UNESCO

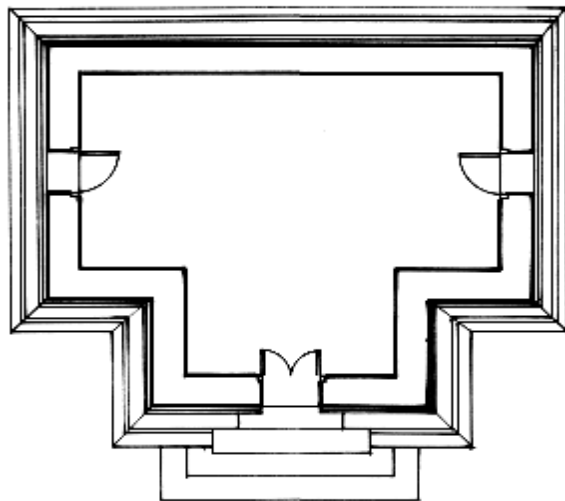
PLAN DE SAUVEGARDE ET DE MISE EN VALEUR



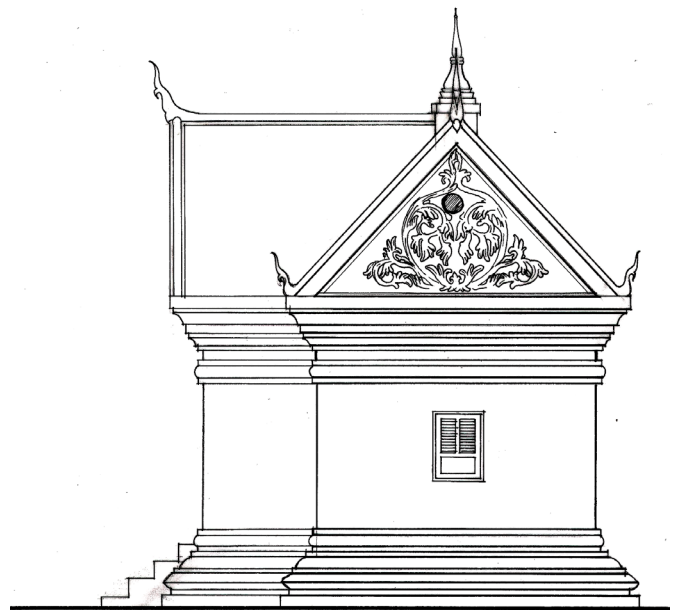
ດ້ານໜ້າ  
FAÇADE Nord - Ouest



ຮູບຕັດ  
COUPE



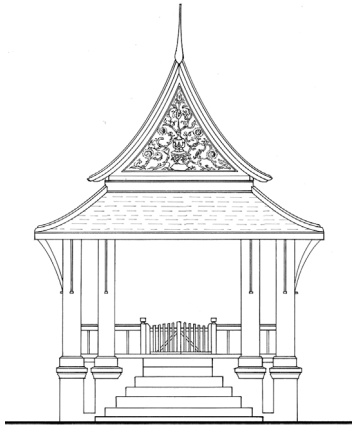
ແຜນຜັງ  
PLAN



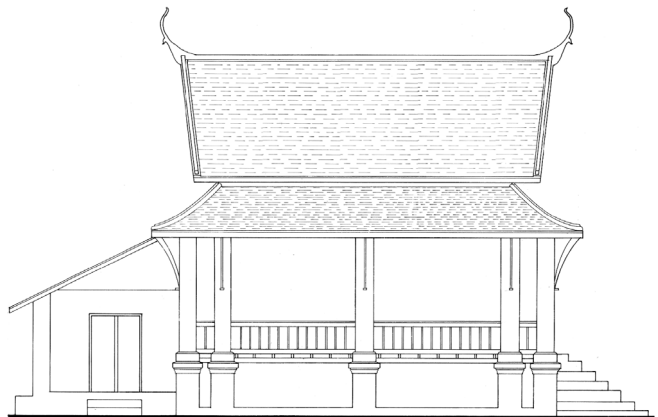
ດ້ານຂ້າງ  
FAÇADE Sud - Est

ວັດໝີ່ນນາ  
VAT MEUNNA

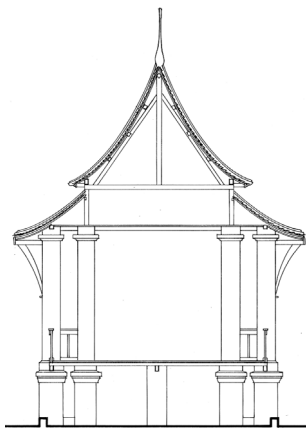




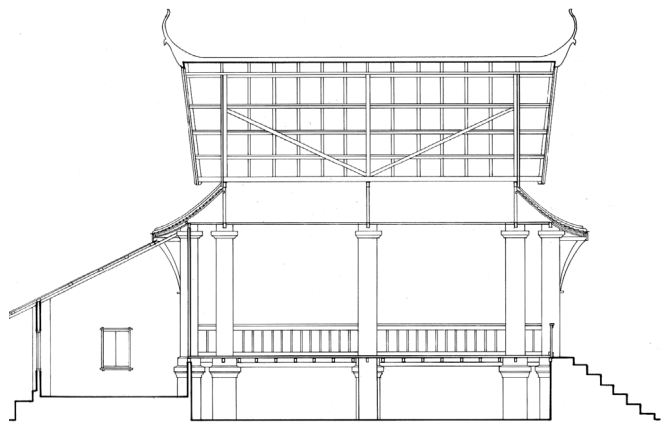
ຮູບຕ້ານ ທິດຕາເວັນອອກ ສ່ຽງເໜືອ  
FAÇADE Sud - Est



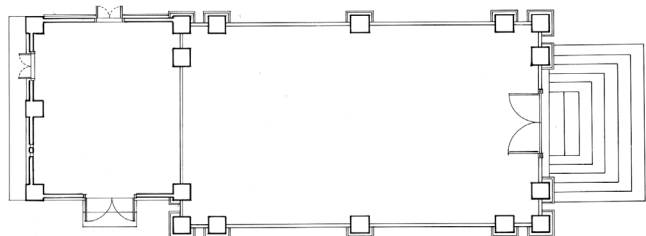
ຮູບຕ້ານ ທິດຕາເວັນຕົກ ສ່ຽງໃຕ້  
FAÇADE Sud - Ouest



ຮູບຕັດທາງຂວາງ  
COUPE TRANSVERSALE



ຮູບຕັດທາງຍາວ  
COUPE LONGITUDINALE

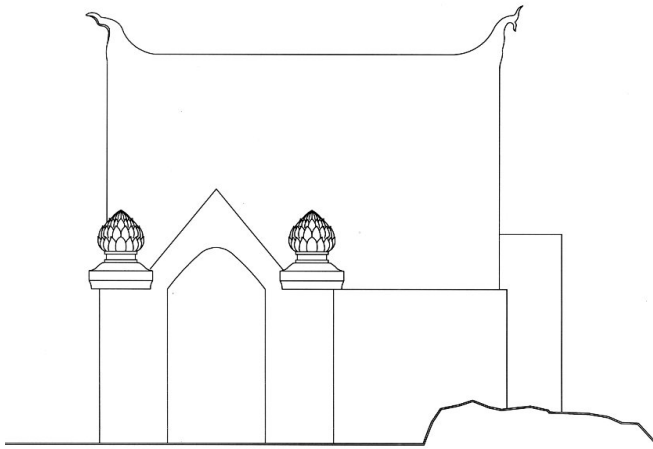


ແຜນຜັງ ຊັ້ນ 0

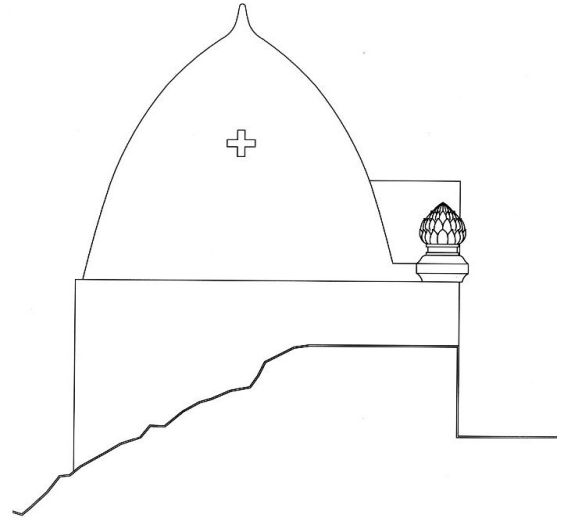
PLAN REZ DE CHAUSSEE

ວັດໃໝ່  
VAT MAY

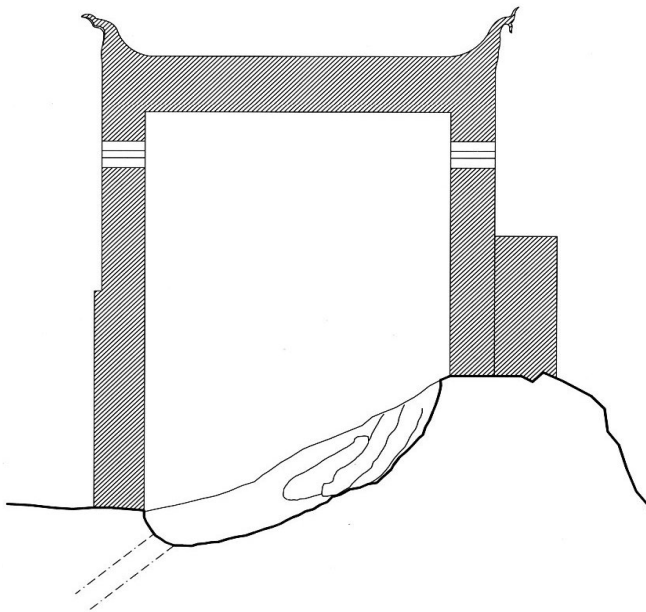




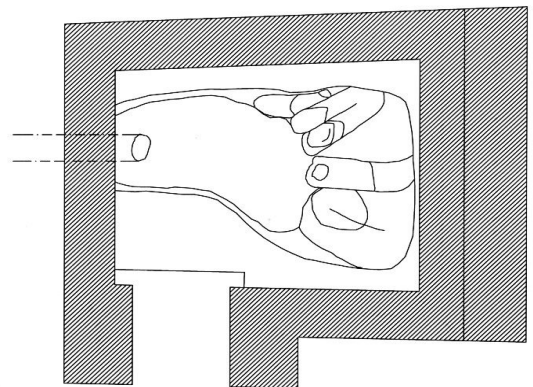
ດ້ານໜ້າ  
FAÇADE Sud - Ouest



ດ້ານຂ້າງຊ້າຍ  
FAÇADE Nord - Ouest



ຮູບ ຕັດທາງຍາວ  
COUPE LONGITUDINALE

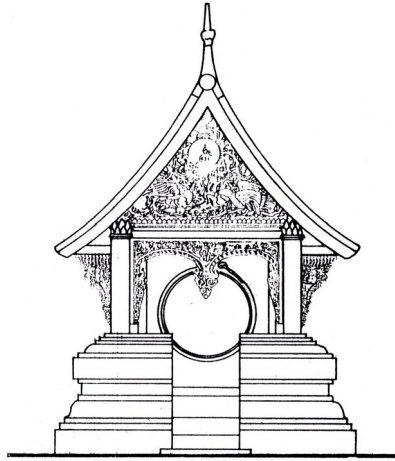


ແຜນຜັງ  
PLAN

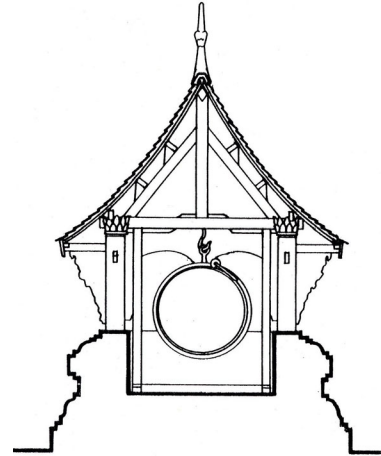
ວັດ ຖ້ຳພູສີ  
VAT THAMPHOUSI

0 0.5

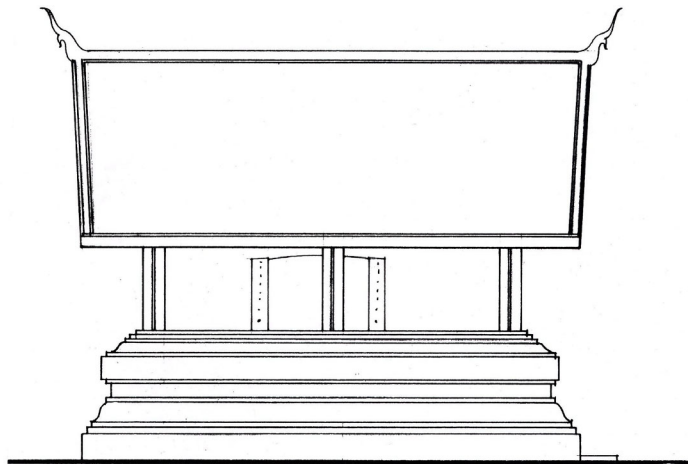




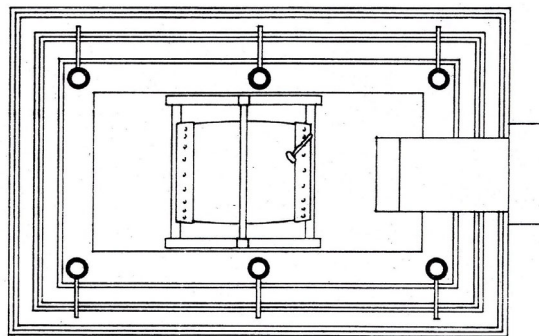
ຮູບດ້ານ ທິດຕາເວັນຕົກ ສ່ຽງໃຕ້  
FAÇADE Sud - Ouest



ຮູບຕັດທາງຂວາງ  
COUPE TRANSVERSALE



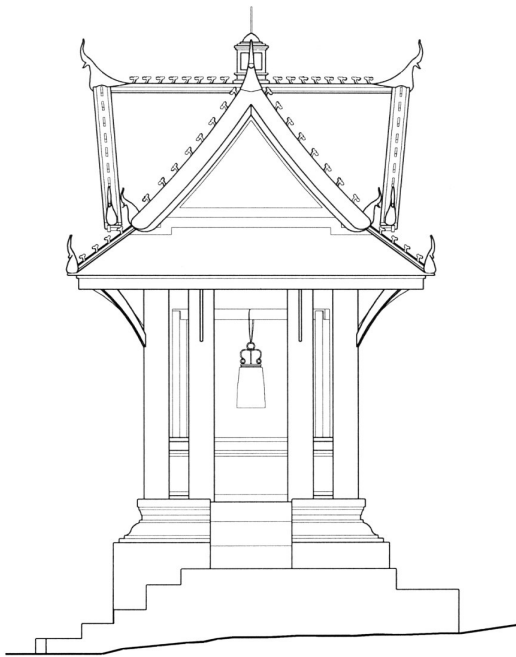
ຮູບດ້ານ ທິດຕາເວັນຕົກ ສ່ຽງເໜືອ  
FAÇADE Nord - Ouest



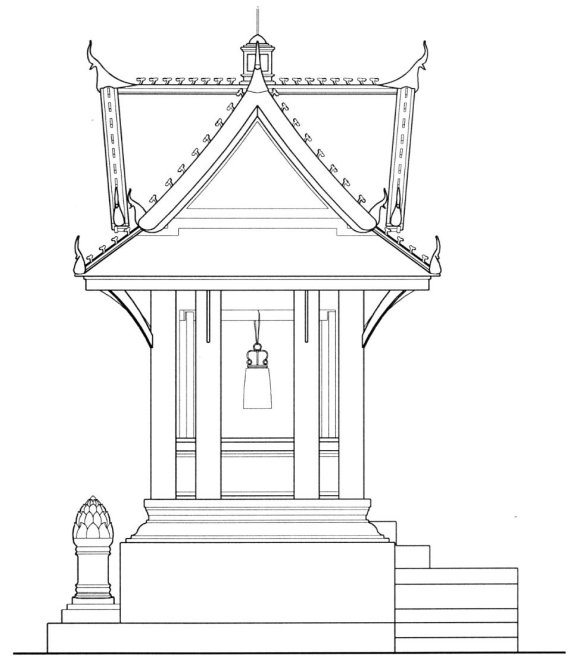
ແຜນຜິງ  
PLAN

ວັດຊຽງທອງ  
VAT XIENG THONG

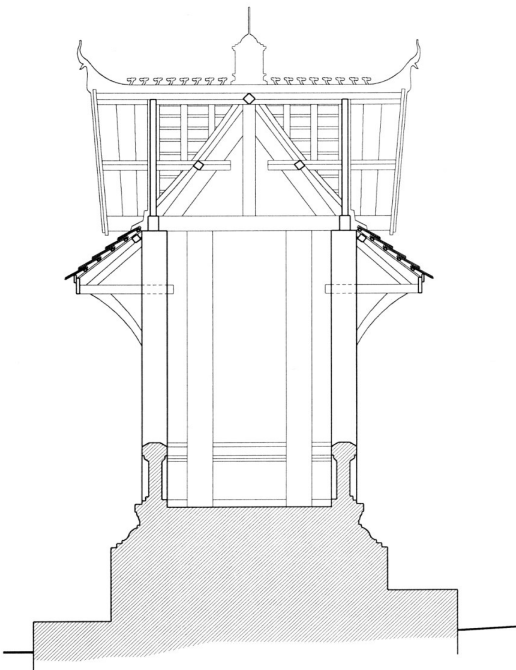




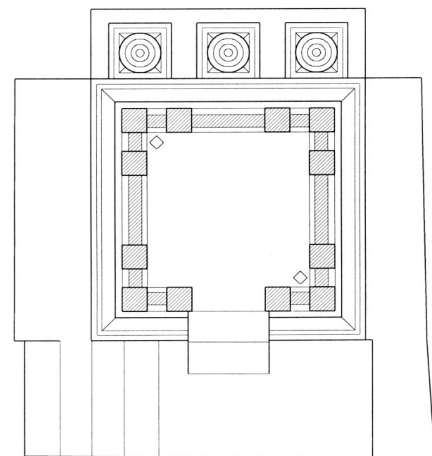
ດ້ານໜ້າ  
FAÇADE



ດ້ານຂ້າງ  
FAÇADE



ຮູບຕັດ  
COUPE FACADE



ແຜນຜັງ  
PLAN

ວັດ ສີພູດທະບາດ  
VAT PHOUTHABATH



ພາກທີ 2 : ອາຄານສ່ວນປະກອບຂອງ ວັດ

PARTIE 2 : BATIMENTS COMPOSANT UN MONASTERE

ຫ້ອງການມໍລະດົກ

ຫຼວງພະບາງ ເມືອງມໍລະດົກໂລກຂອງອົງການ ອຸຍແນສະໂກ

ແຜນຜັງປົກປັກຮັກສາ ແລະ ເຮັດໃຫ້ມີຄຸນຄ່າ

La Maison du Patrimoine

Luang Prabang, Ville du Patrimoine mondial de l'UNESCO

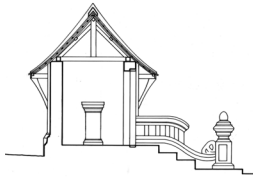
PLAN DE SAUVEGARDE ET DE MISE EN VALEUR



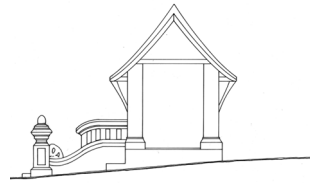
ກຳລັງ ສຳຫລວດ

ວັດ ທາດຫລວງ  
VAT THATLOUANG

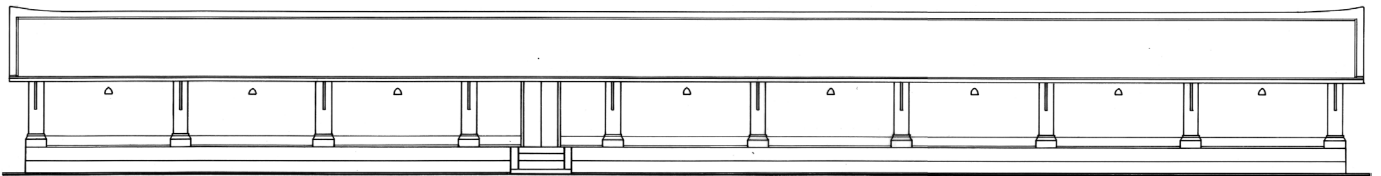




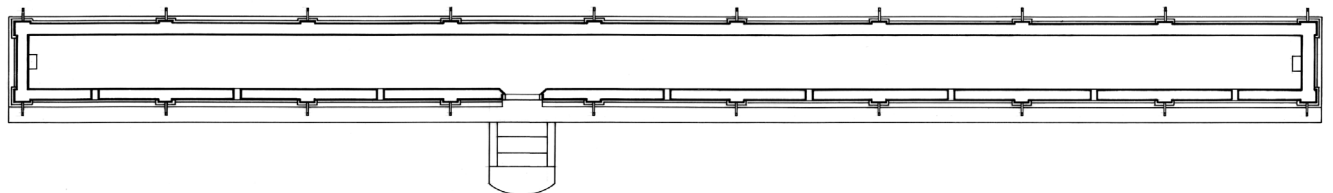
ຮູບຕັດທາງຂວາງ  
COUPE TRANSVERSALE



ຮູບດ້ານທິດຕາເວັນອອກ ສ່ຽງໃຕ້  
FAÇADE Sud - Est



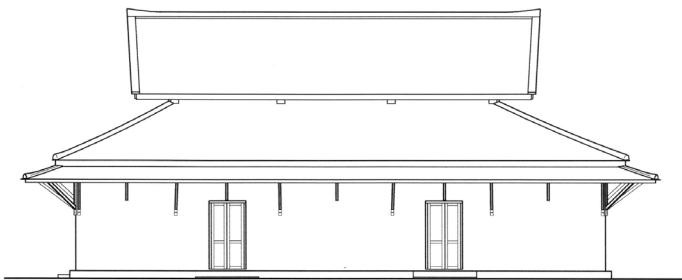
ຮູບດ້ານ ທິດຕາເວັນຕົກ ສ່ຽງໃຕ້  
FAÇADE Sud - Ouest



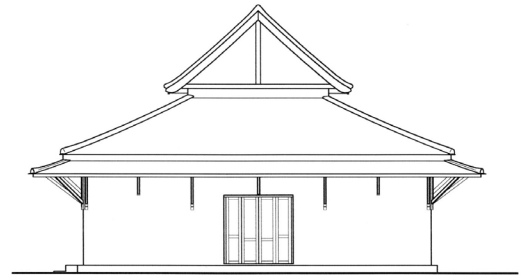
ແຜນຜັງ  
PLAN REZ DE CHAUSSEE

ວັດ ຫາດສັຽວ  
VAT HATSIAO

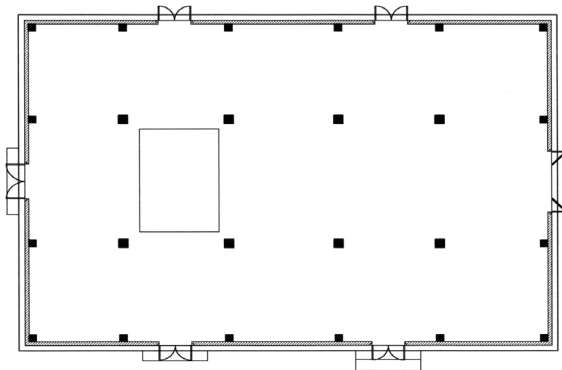




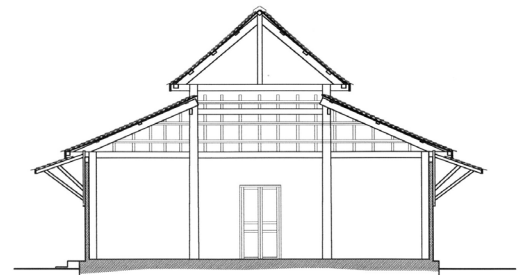
ຮູບດ້ານ ທິດຕາເວັນຕົກ ສ່ຽງເໜືອ  
FAÇADE Nord - Ouest



ຮູບດ້ານ ທິດຕາເວັນອອກ ສ່ຽງເໜືອ  
FAÇADE Nord - Est



ແຜນຜັງ  
PLAN



ຮູບຕັດ ທາງຂວາງ  
COUPE TRANSVERSALE

ວັດ ທາດ

VAT THAT



ພາກທີ 2 : ອາຄານສ່ວນປະກອບຂອງ ວັດ

PARTIE 2 : BATIMENTS COMPOSANT UN MONASTERE

ຫ້ອງການມໍລະດົກ

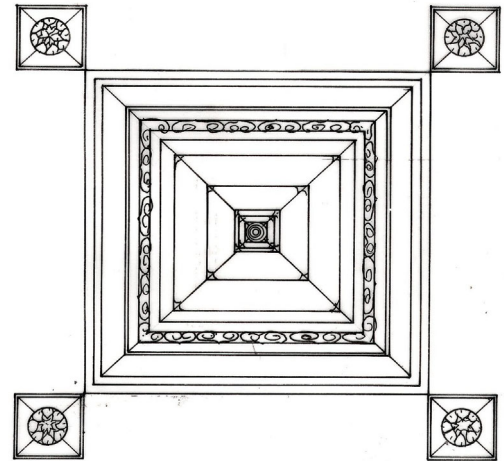
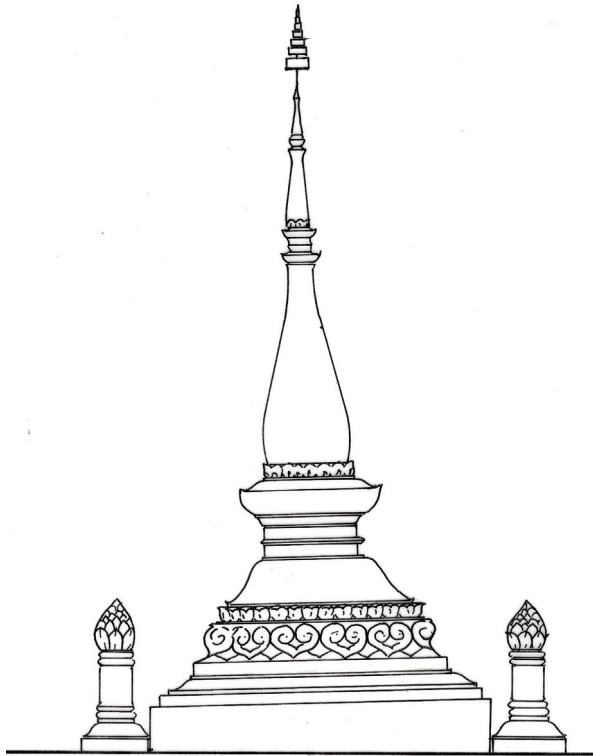
ຫຼວງພະບາງ ຕືນອາຄານມໍລະດົກໂລກຂອງອົງການ ອຸຍແນສະໂກ

ແຜນຜັງປົກປັກຮັກສາ ແລະ ເຮັດໃຫ້ມີຄຸນຄ່າ

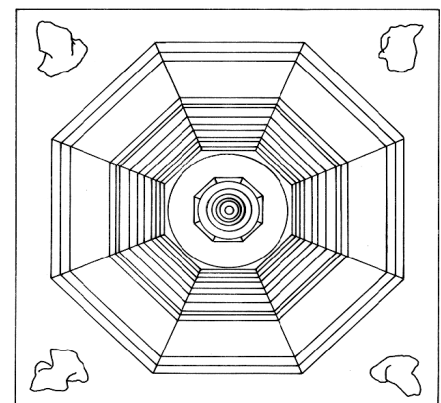
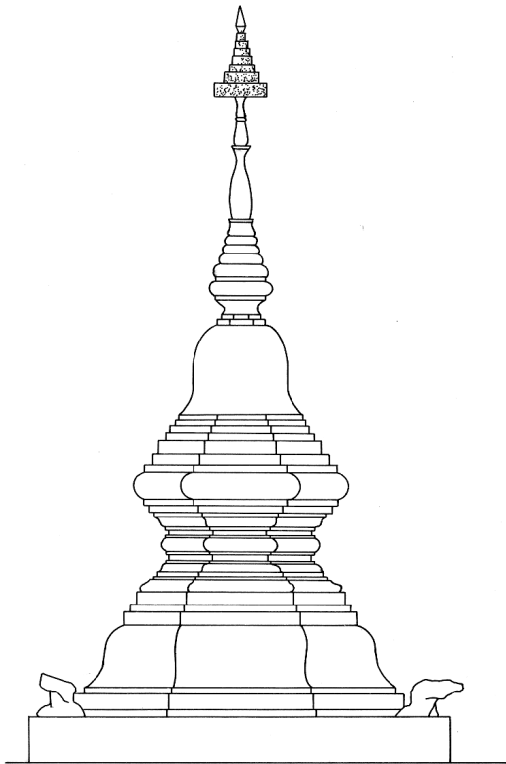
La Maison du Patrimoine

Luang Prabang, Ville du Patrimoine mondial de l'UNESCO

PLAN DE SAUVEGARDE ET DE MISE EN VALEUR



ວັດແສນ  
 VAT SENE



ວັດຊຽງທອງ  
 VAT XIENG THONG



ພາກທີ 2 : ສ່ວນປະກອບຂອງວັດ

PARTIE 2 : BATIMENTS COMPOSANT UN MONASTERE

ຫ້ອງການນໍລະດົກ

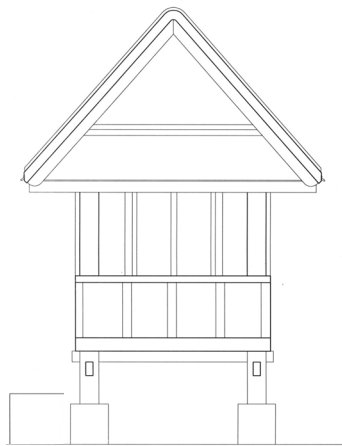
ຫຼວງພະບາງ ເມືອງນໍລະດົກໂລກຂອງອົງການ ອຸຍແນສະໂກ

ແຜນຜັງປົກປັກຮັກສາ ແລະ ເຮັດໃຫ້ມີຄຸນຄ່າ

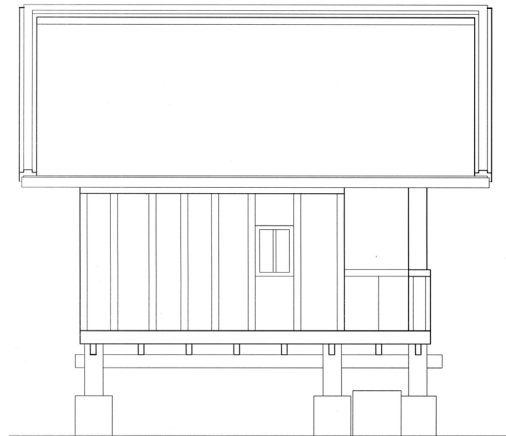
La Maison du Patrimoine

Luang Prabang, Ville du Patrimoine mondial de l'UNESCO

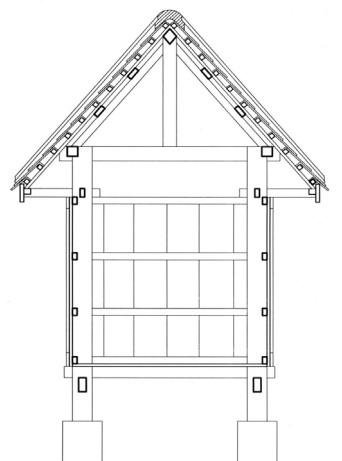
PLAN DE SAUVEGARDE ET DE MISE EN VALEUR



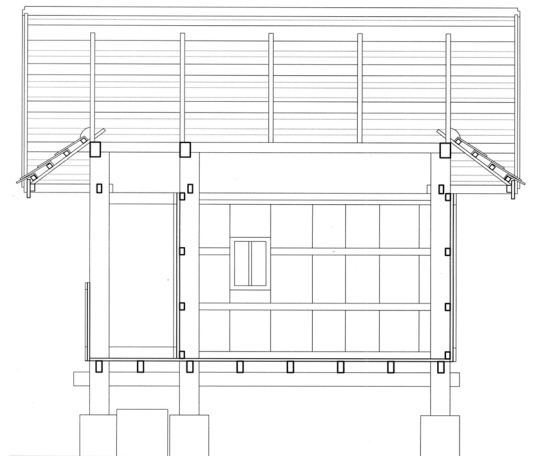
ຮູບດ້ານ ທິດຕາເວັນອອກສ່ຽງໃຕ້  
FAÇADE Sud - Est



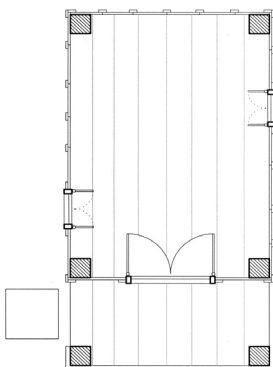
ຮູບດ້ານ ທິດຕາເວັນຕົກສ່ຽງໃຕ້  
FAÇADE Sud - Ouest



ຮູບຕັດ ທາງຂວາງ  
COUPE TRANSVERSALE



ຮູບຕັດ ທາງຍາວ  
COUPE LONGITUDINALE



ແຜນຜັງ  
PLAN

ວັດ ຊຽງແມນ  
VAT XIENGMENE



ພາກທີ 2 : ສ່ວນປະກອບຂອງ ວັດ

PARTIE 2 : BATIMENTS COMPOSANT UN MONASTERE

ຫ້ອງການມໍລະດົກ

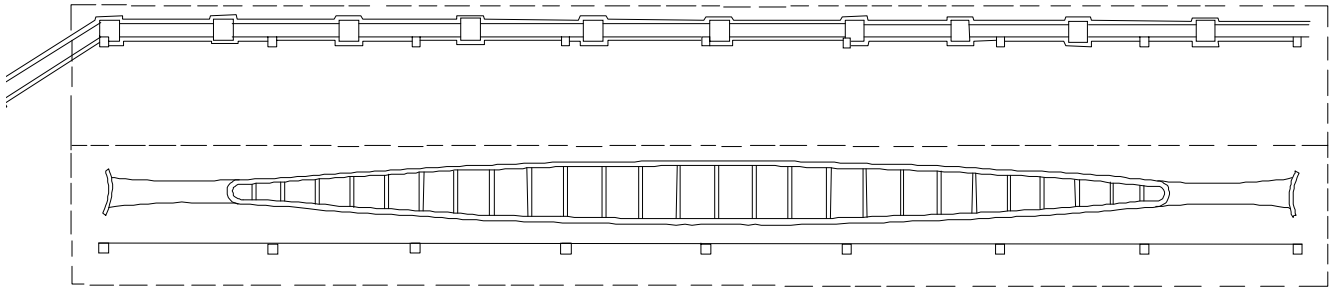
La Maison du Patrimoine

ຫຼວງພະບາງ ເມືອງມໍລະດົກໂລກຂອງອົງການ ອຸຍແນສະໂກ

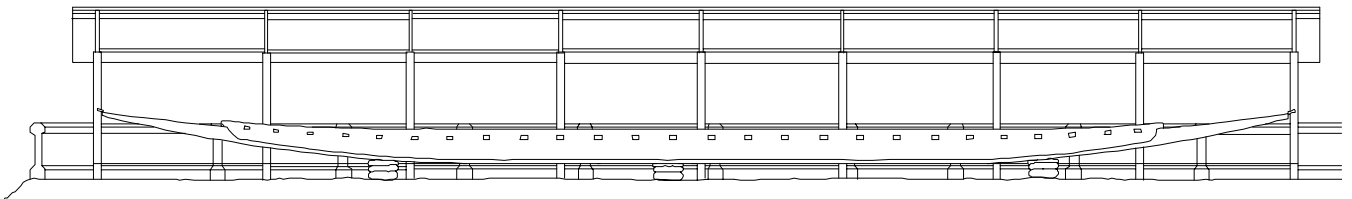
Luang Prabang, Ville du Patrimoine mondial de l'UNESCO

ແຜນຜັງປົກປັກຮັກສາ ແລະ ເຮັດໃຫ້ມີຄຸນຄ່າ

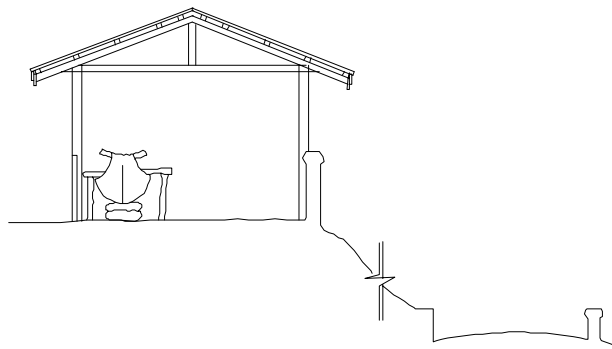
PLAN DE SAUVEGARDE ET DE MISE EN VALEUR



ແຜນຜັງ  
PLAN



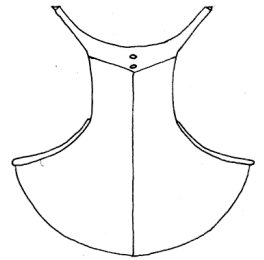
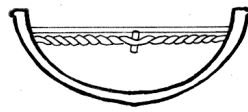
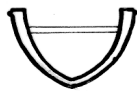
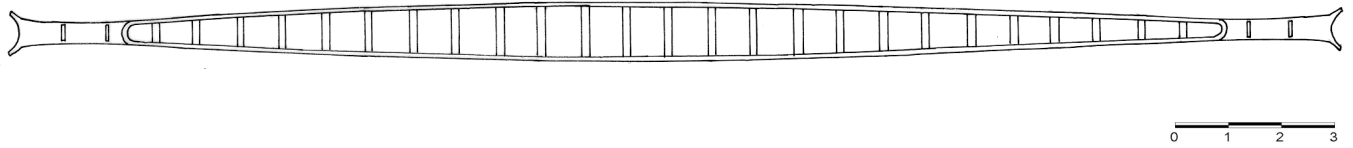
ຮູບຕັດ ທາງຍາວ  
COUPE LONGITUDINALE



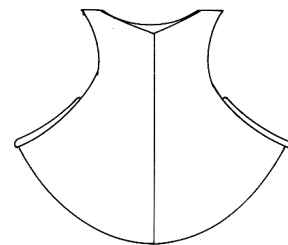
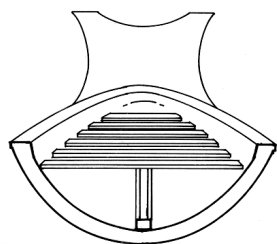
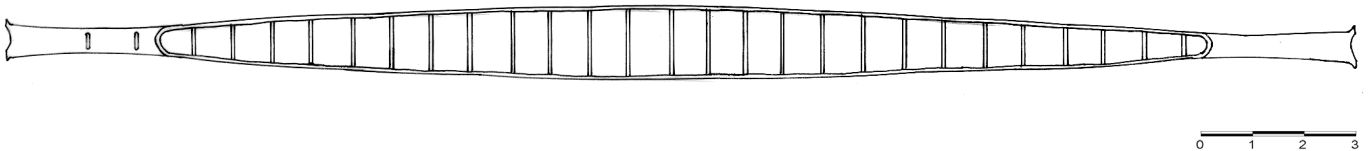
ຮູບຕັດ ທາງຂວາງ  
COUPE TRANSVERSALE

ວັດຊຽງທອງ  
VAT XIENG THONG



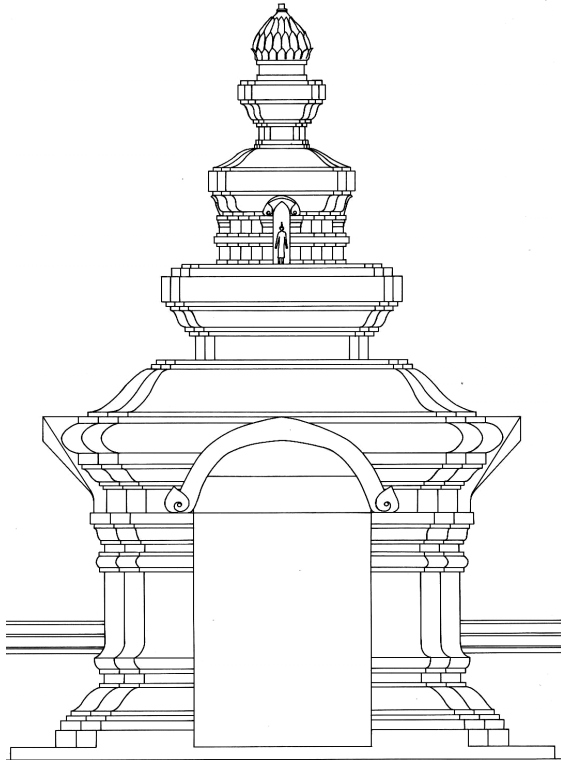


ວັດ ໄຫມ  
VAT MAY

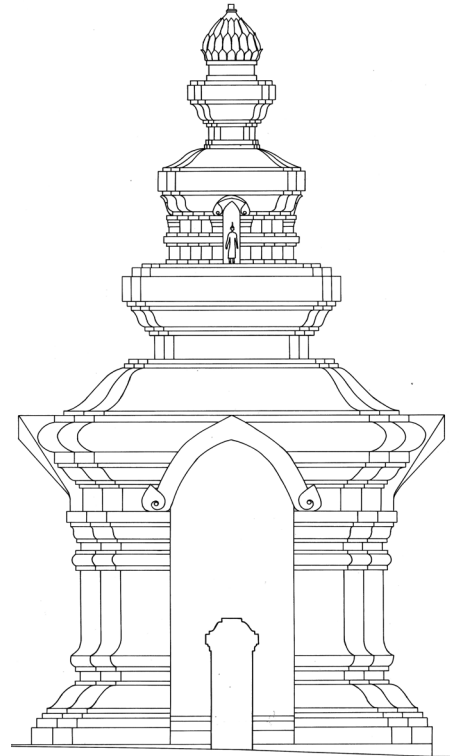


ວັດ ໜອງ  
VAT NONG

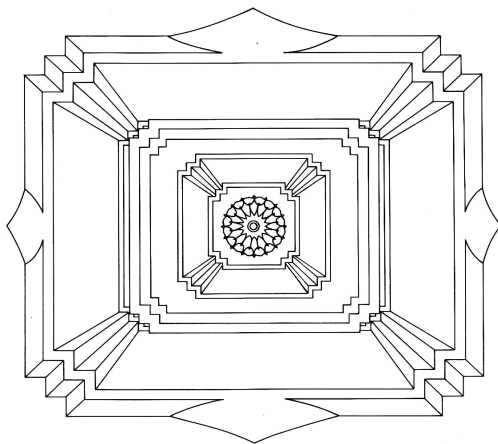




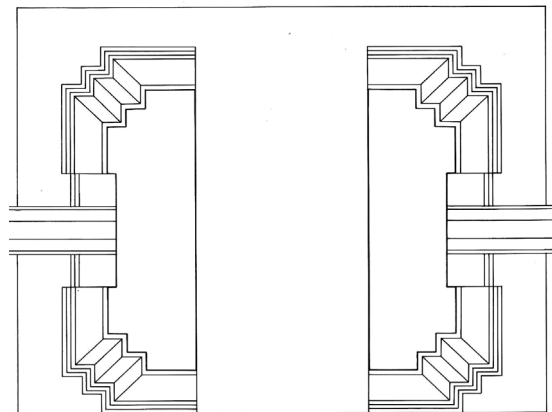
ຮູບດ້ານໜ້າ  
FAÇADE Sud - Est



ຮູບດ້ານຂ້າງ  
FAÇADE Sud - Ouest



ແຜນຜັງຫລັງຄາ  
PLAN MASS



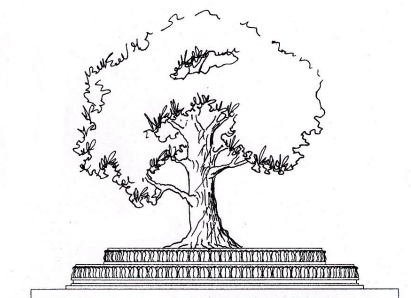
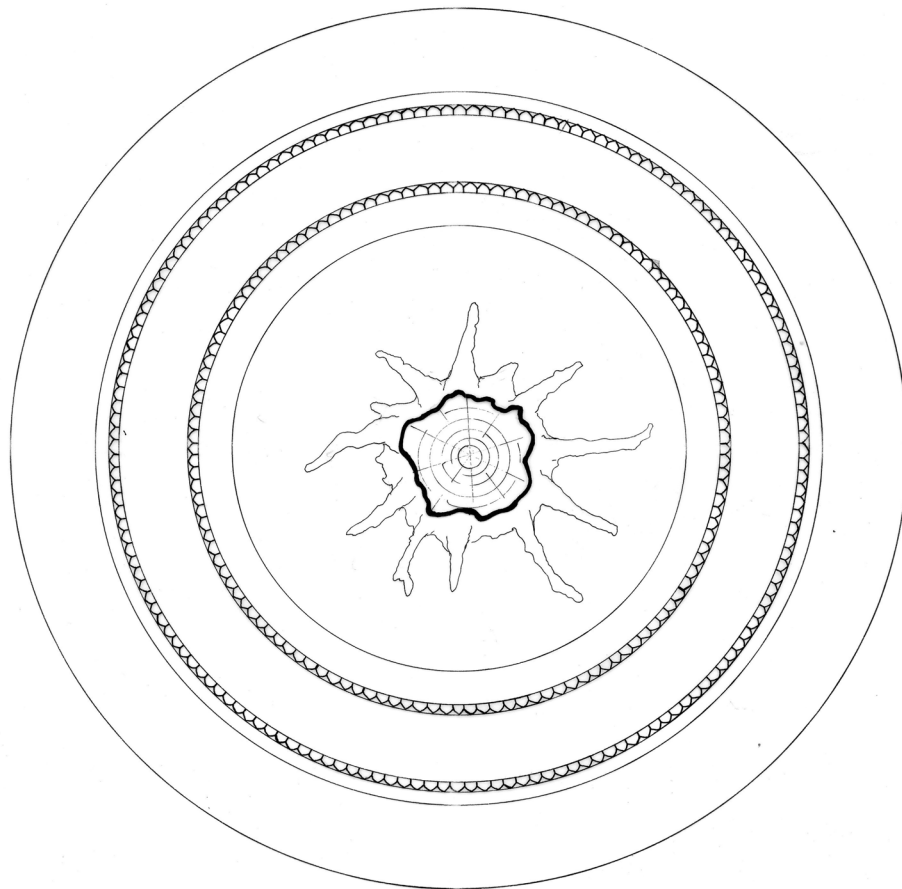
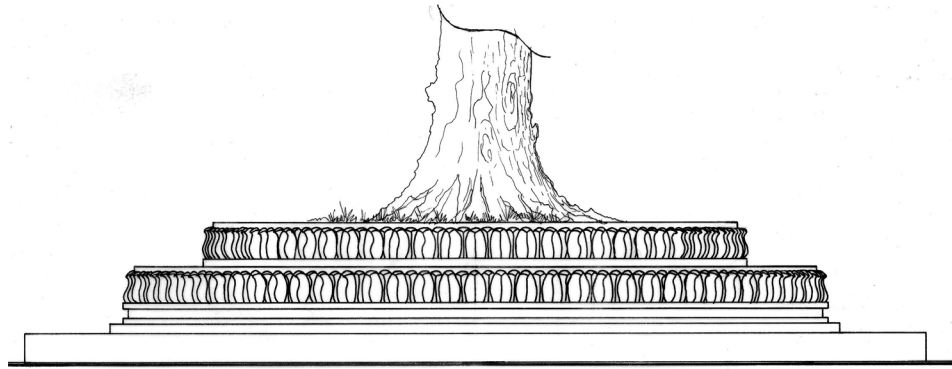
ແຜນຜັງ  
PLAN

ວັດ ວິຊຸນ  
VAT VIXOUN



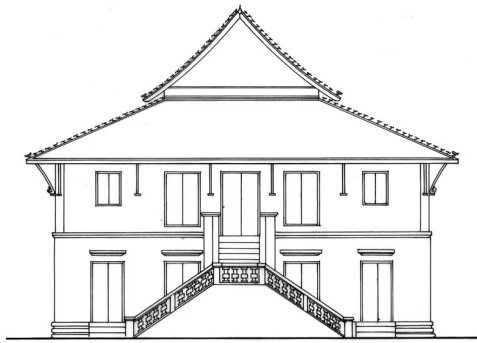
ພາກທີ 2 : ສ່ວນປະກອບຂອງ ວັດ

PARTIE 2 : BATIMENTS COMPOSANT UN MONASTERE

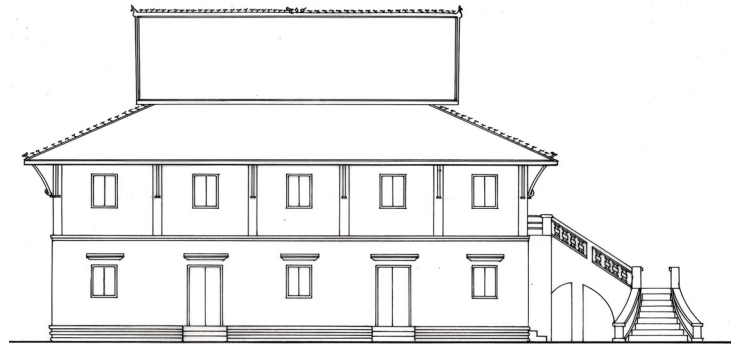


ວັດຈອມສີ  
VAT CHOUMSI

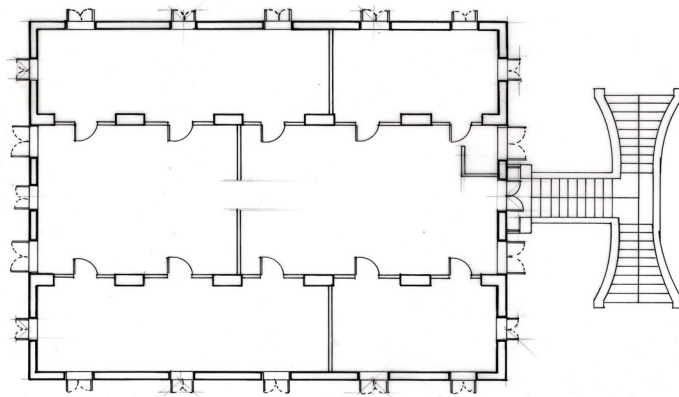




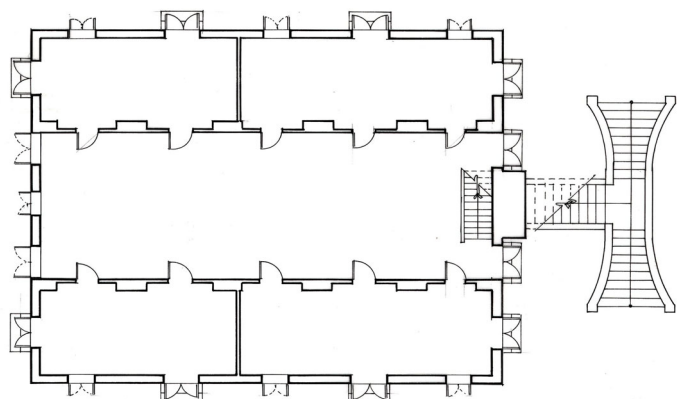
ຮູບດ້ານ ທິດຕາເວັນອອກ ສ່ຽງເໜືອ  
FAÇADE Nord - Est



ຮູບດ້ານ ທິດຕາເວັນອອກ ສ່ຽງໃຕ້  
FAÇADE Sud - Est



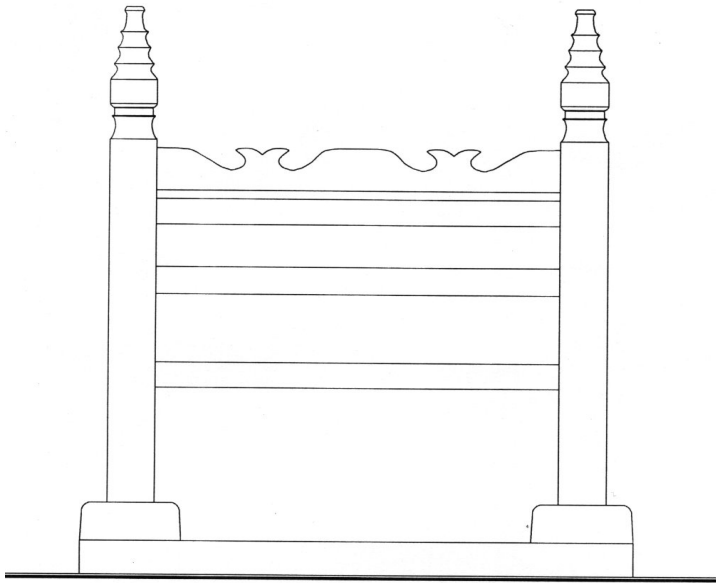
ແຜນຜັງ ຊັ້ນ 1  
PLAN ETAGE



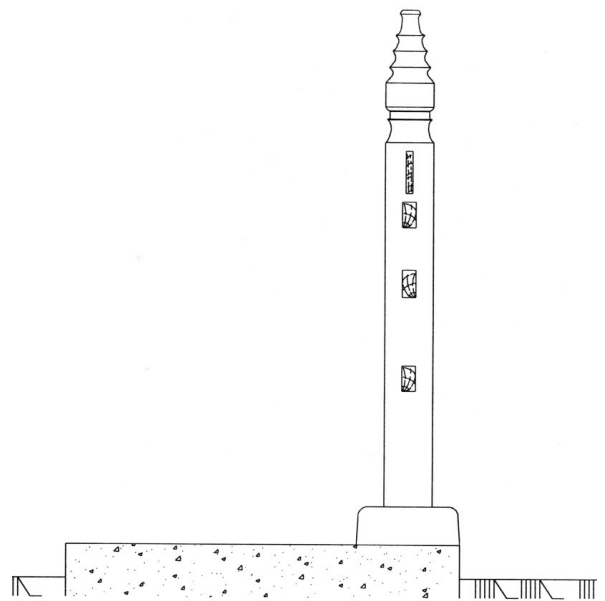
ແຜນຜັງ ຊັ້ນ 0  
PLAN REZ DE CHAUSSEE

ວັດ ສີພຸດທະບາດ  
VAT SIPHOUTTHABATH

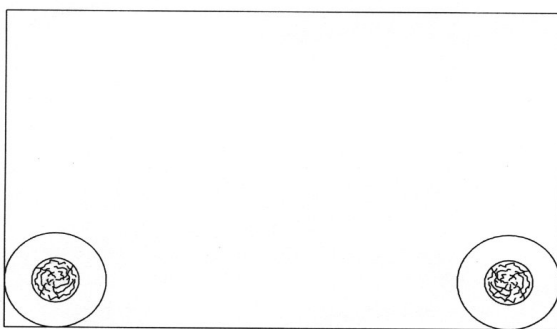




ດ້ານຫນ້າ  
FAÇADE

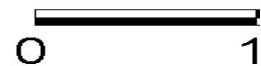


ຮູບຕັດ  
COUPE FADCADE



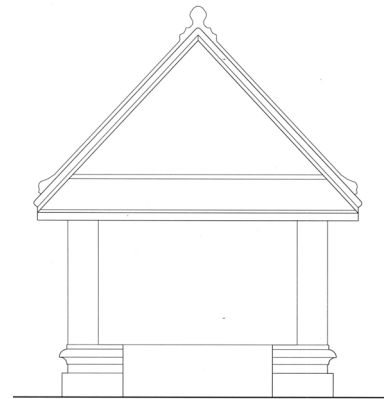
ແຜນຜັງ  
PLAN

ວັດ ໃໝ່  
VAT MAY

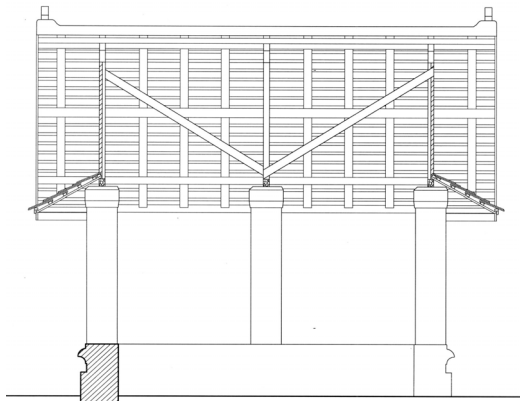




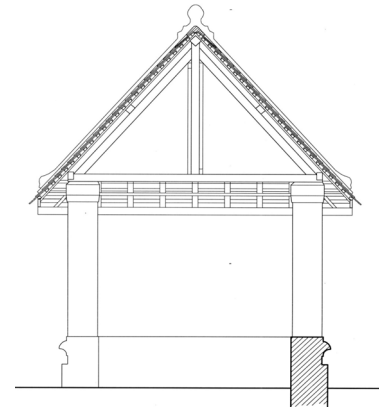
ຮູບຕົ້ນໜ້າ  
FAÇADE Nord - Ouest



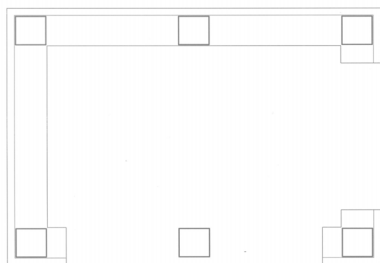
ຮູບຕົ້ນຂ້າງ  
FAÇADE Sud - Ouest



ຮູບຕັດທາງຍາວ  
COUPE LONGITUDINALE



ຮູບຕັດ ທາງຂວາງ  
COUPE TRANSVERSALE



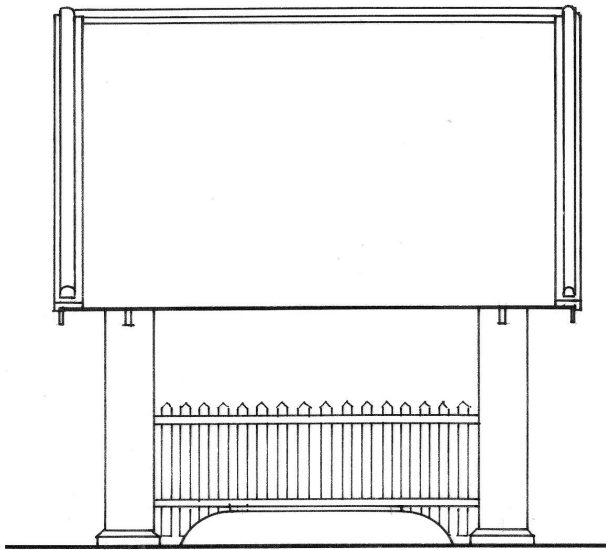
ແຜນຜັງ  
PLAN



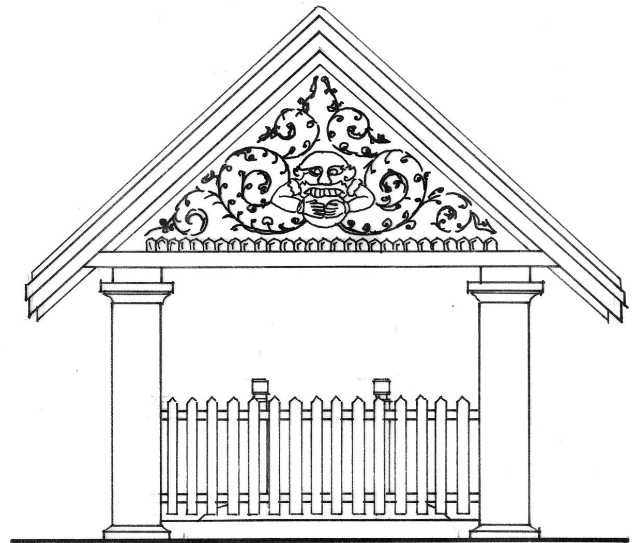
ວັດ ໜີ້ນນາ  
VAT MEUNNA

ພາກທີ 2 : ອາຄານສ່ວນປະກອບຂອງ ວັດ

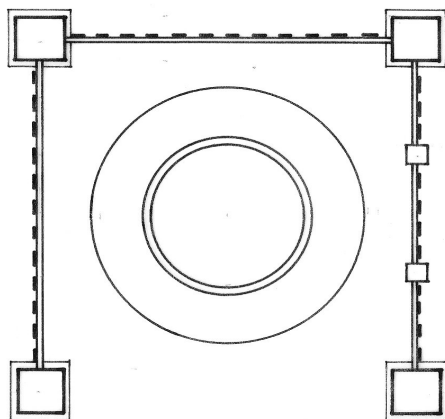
PARTIE 2 : BATIMENTS COMPOSANT UN MONASTERE



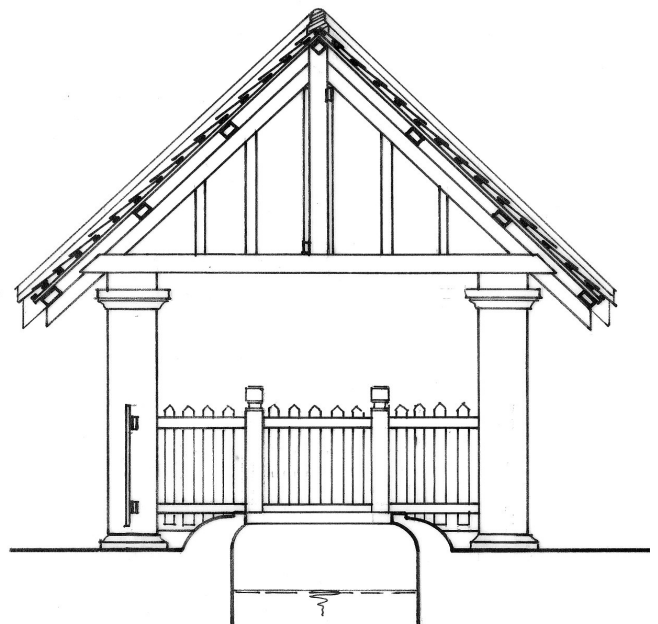
ຮູບດ້ານໜ້າ  
FAÇADE Nord - Ouest



ຮູບດ້ານຂ້າງ  
FAÇADE Nord - Est



ແຜນຜັງ  
PLAN

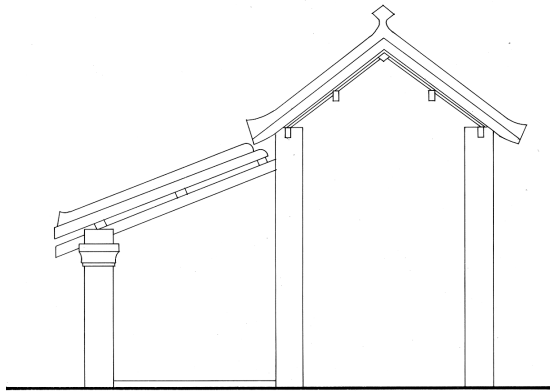


ຮູບຕັດທາງຂວາງ  
COUPE TRANSVERSALE

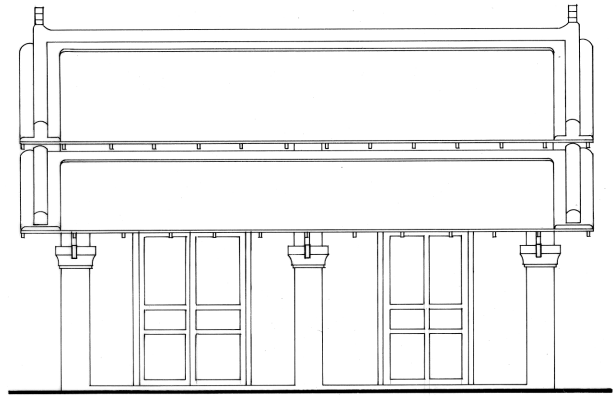
ວັດ ໃໝ່

VAT MAY

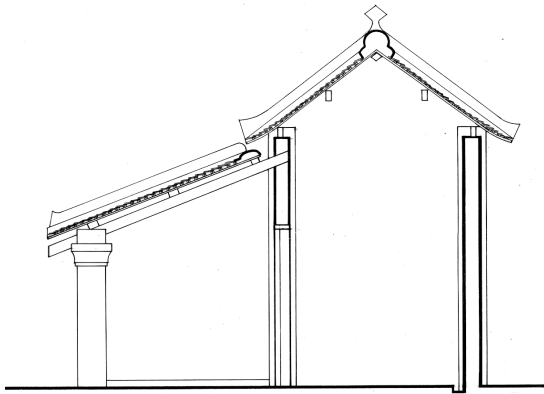




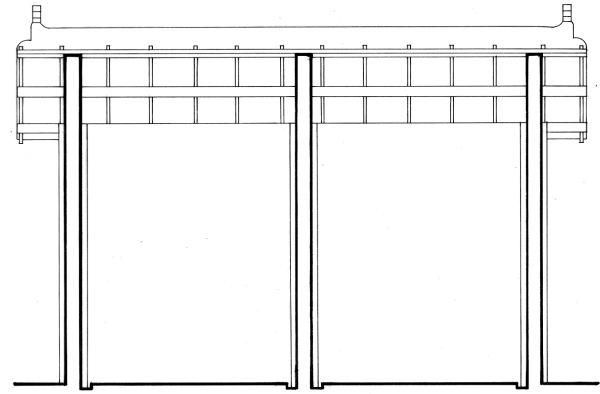
ຮູບດ້ານ ທິດຕາເວັນຕົກ ສ່ຽງໃຕ້  
FAÇADE Sud - Ouest



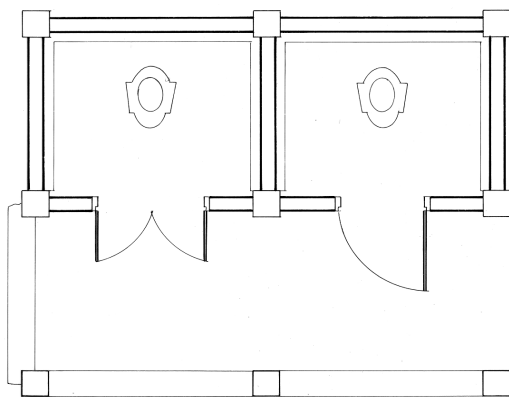
ຮູບດ້ານ ທິດຕາເວັນອອກ ສ່ຽງໃຕ້  
FAÇADE Sud - Est



ຮູບຕັດທາງຂວາງ  
COUPE TRANSVERSALE



ຮູບຕັດທາງຍາວ  
COUPE LONGITUDINALE



ແຜນຜັງ ຊັ້ນ 0  
PLAN REZ DE CHAUSSE



ວັດ ອາຮາມ  
VAT AHAM

ພາກທີ 2 : ອາຄານສ່ວນປະກອບຂອງ ວັດ

PARTIE 2 : BATIMENTS COMPOSANT UN MONASTERE