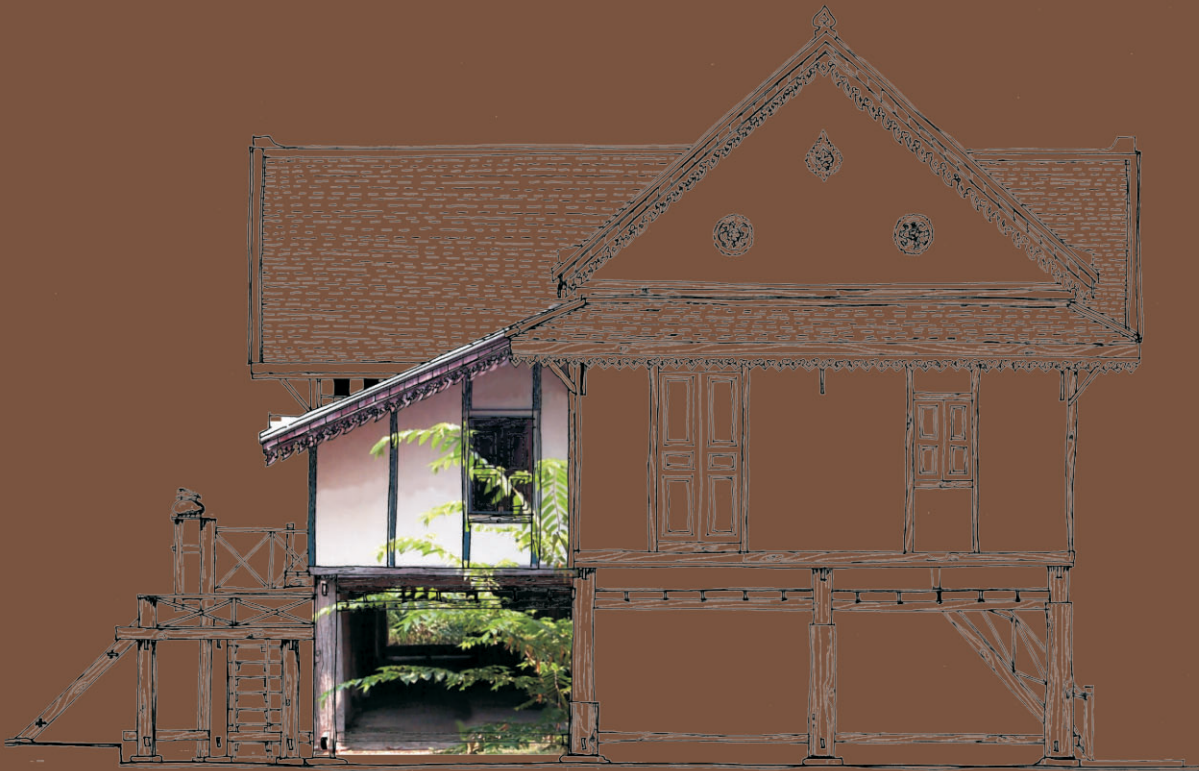


ປຶ້ມແນະນຳເບີທີ 1 :
ປະເພດສະຖາປັດຕະຍະກຳ

FASCICULE No 1 :
TYPES ARCHITECTURAUX



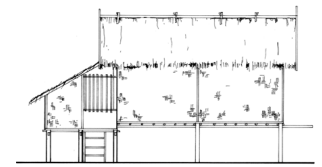
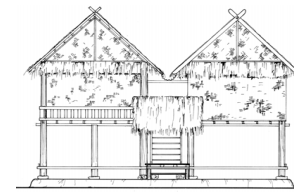
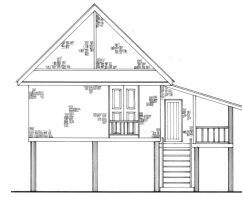
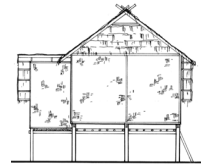
ຫຼັງຄາດ່ຽວ
 Simple pignon

ຫຼັງຄາດ່ຽວມີເຊຍ
 Simple pignon avec véranda

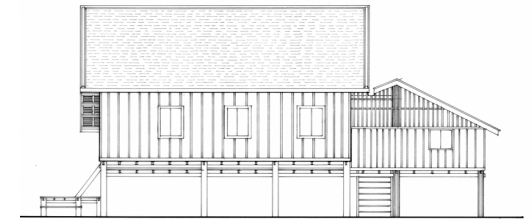
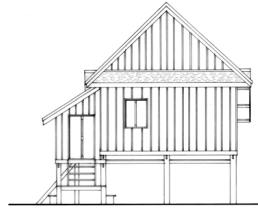
ຫຼັງຄາຄູ່
 Double pignon

ເຮືອນມີເຮືອນຄົວຕິດ
 Maison avec cuisine détachée

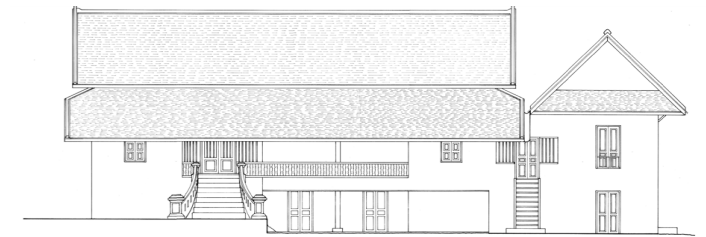
ໄມ້ໃຜ່
 BAMBOU



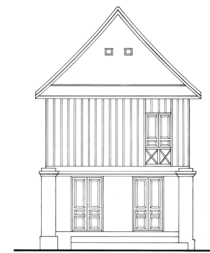
ໄມ້
 BOIS



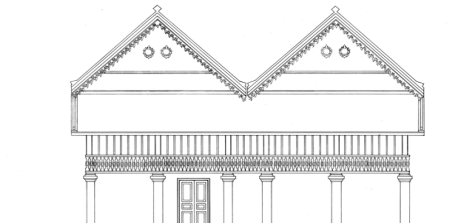
ໄມ້ - ຕອກຊີ
 TORCHIS



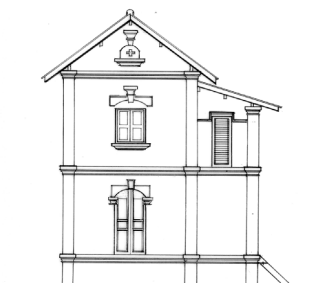
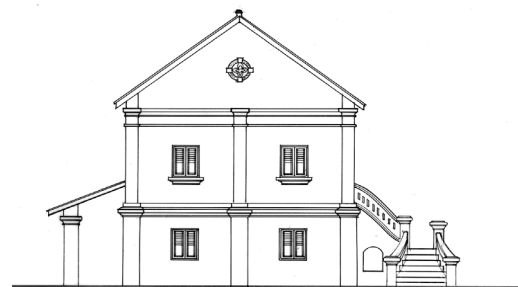
ດິນຈີ່ປະທາຍປູນ - ໄມ້
 BRIQUE BOIS



ດິນຈີ່ປະທາຍປູນ - ຕອກຊີ
 BRIQUE TORCHIS



ດິນຈີ່ປະທາຍປູນ
 BRIQUE





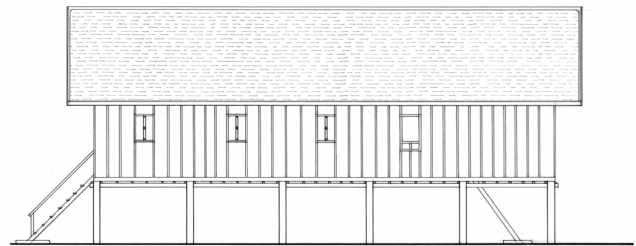
ແຜນຜັງບອກທີ່ຕັ້ງ PLAN DE LOCALISATION



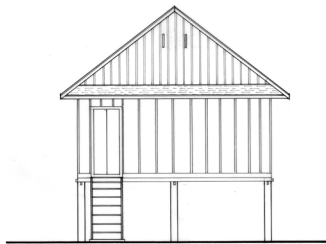
ແຜນຜັງລວມ PLAN DE MASSE



ຮູບດ້ານ ທິດຕາເວັນຕົກ ສ່ຽງໃຕ້ FAÇADE SUD - OUEST



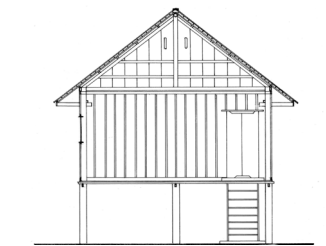
ຮູບດ້ານ ທິດຕາເວັນຕົກ ສ່ຽງ ເໜືອ FAÇADE NORD - OUEST



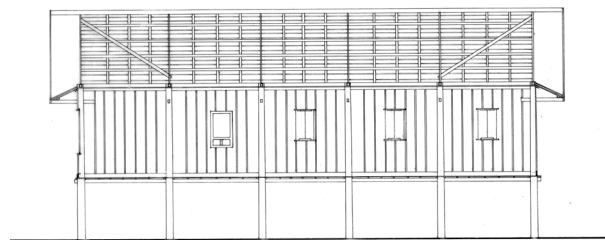
ຮູບດ້ານ ທິດຕາເວັນອອກ ສ່ຽງ ເໜືອ FAÇADE NORD - EST



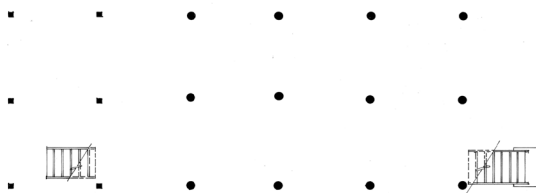
ຮູບດ້ານ ທິດຕາເວັນອອກ ສ່ຽງໃຕ້ FAÇADE SUD - EST



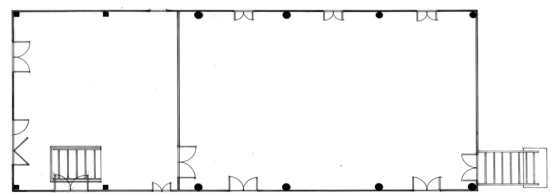
ຮູບຕັດທາງຂວາງ COUPE TRANSVERSALE



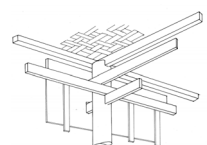
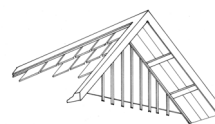
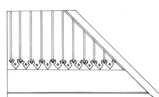
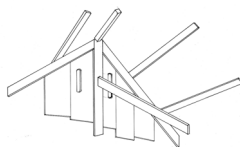
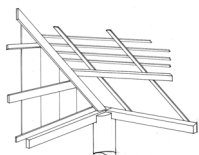
ຮູບຕັດທາງຍາວ COUPE LONGITUDINALE



ແຜນຜັງ ຊັ້ນ 0 PLAN REZ DE CHAUSSEE



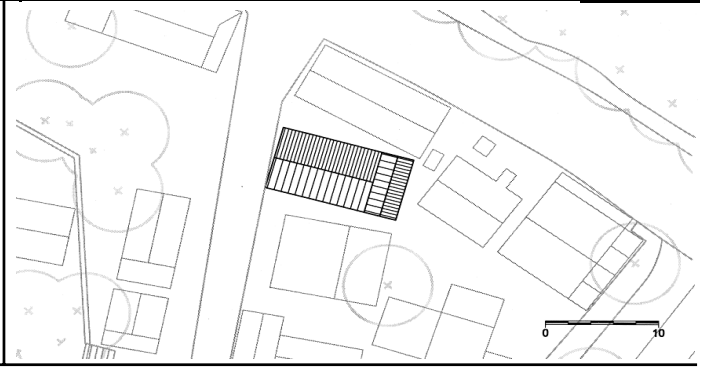
ແຜນຜັງ ຊັ້ນ 1 PLAN ETAGE



ຮູບຂະໜາຍ DETAILS



ແຜນຜັງບອກທີ່ຕັ້ງ PLAN DE LOCALISATION



ແຜນຜັງລວມ PLAN DE MASSE



ຮູບຕ້ານ ທິດຕາເວັນຕົກ ສ່ຽງໃຕ້ FAÇADE SUD - OUEST



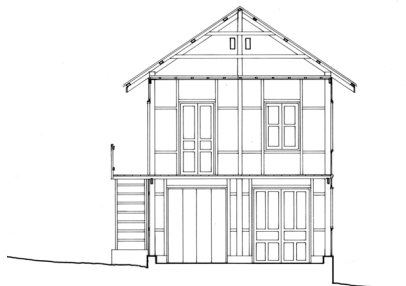
ຮູບຕ້ານ ທິດຕາເວັນຕົກ ສ່ຽງເໜືອ FAÇADE NORD - OUEST



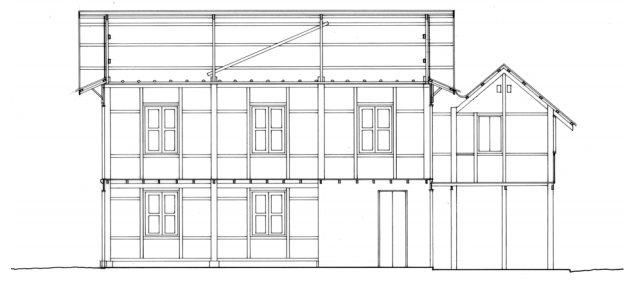
ຮູບຕ້ານ ທິດຕາເວັນອອກ ສ່ຽງເໜືອ FAÇADE NORD - EST



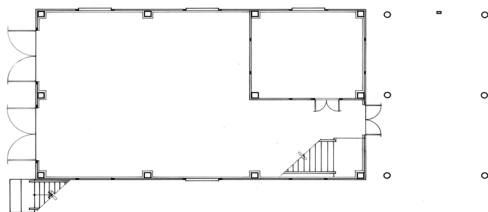
ຮູບຕ້ານ ທິດຕາເວັນອອກ ສ່ຽງໃຕ້ FAÇADE SUD - EST



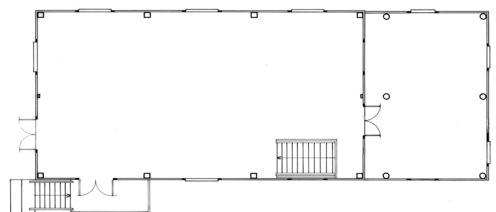
ຮູບຕັດທາງຂວາງ COUPE TRANSVERSALE



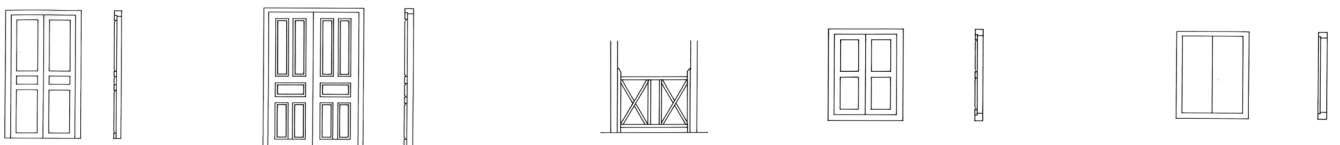
ຮູບຕັດທາງຍາວ COUPE LONGITUDINALE



ແຜນຜັງ ຊັ້ນ 0 PLAN REZ DE CHAUSSEE



ແຜນຜັງ ຊັ້ນ 1 PLAN ETAGE



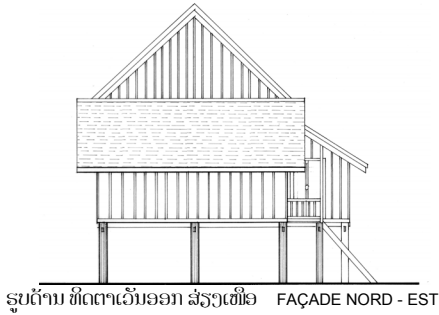
ຮູບຂະຫຍາຍ DETAILS



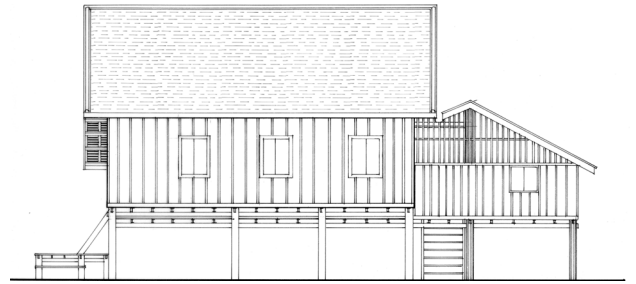
ແຜນຜັງບອກທີ່ຕັ້ງ PLAN DE LOCALISATION



ແຜນຜັງລວມ PLAN DE MASSE



ຮູບດ້ານ ທິດຕາເວັນອອກ ສ່ຽງເໜືອ FAÇADE NORD - EST



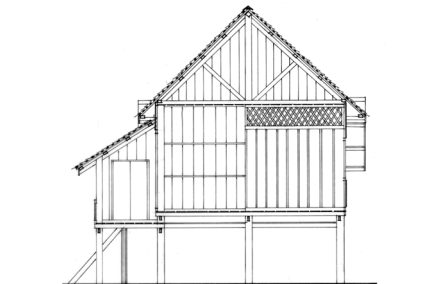
ຮູບດ້ານ ທິດຕາເວັນອອກ ສ່ຽງໃຕ້ FAÇADE SUD - EST



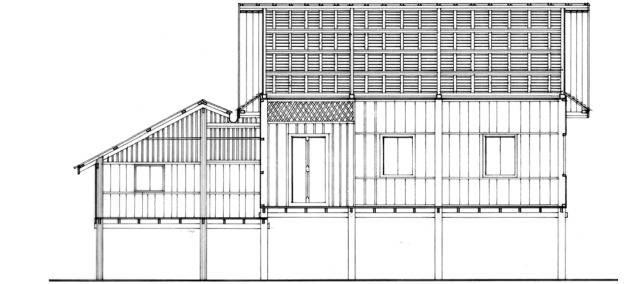
ຮູບດ້ານ ທິດຕາເວັນຕົກ ສ່ຽງໃຕ້ FAÇADE SUD - OUEST



ຮູບດ້ານ ທິດຕາເວັນຕົກ ສ່ຽງເໜືອ FAÇADE NORD - OUEST



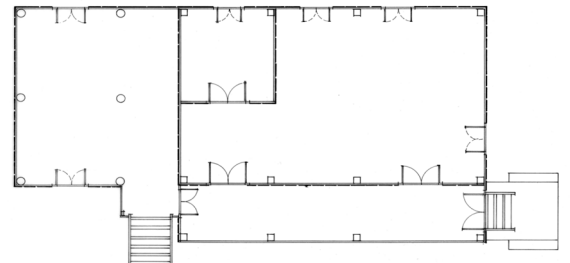
ຮູບຕັດທາງຂວາງ COUPE TRANSVERSALE



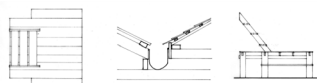
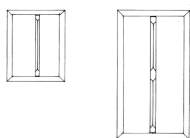
ຮູບຕັດທາງຍາວ COUPE LONGITUDINALE



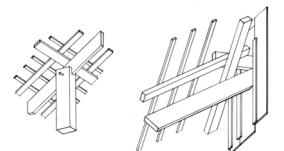
ແຜນຜັງ ຊັ້ນ 0 PLAN REZ DE CHAUSSEE



ແຜນຜັງ ຊັ້ນ 1 PLAN ETAGE

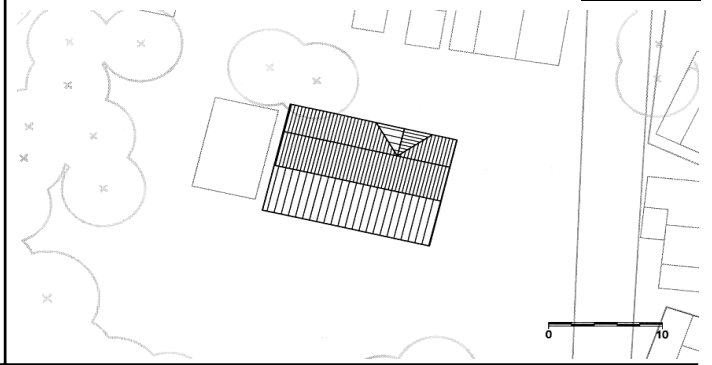


ຮູບຂະໜາຍ DETAILS





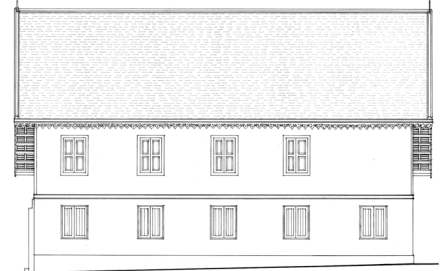
ແຜນຜັງບອກທີ່ຕັ້ງ PLAN DE LOCALISATION



ແຜນຜັງລວມ PLAN DE MASSE



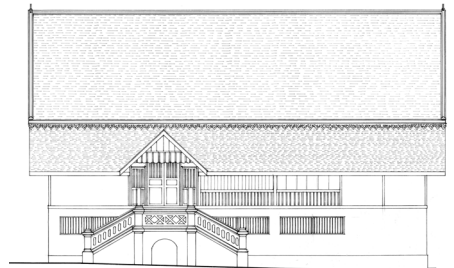
ຮູບດ້ານທິດຕາເວັນຕົກ ສ່ຽງໃຕ້ FAÇADE SUD - OUEST



ຮູບດ້ານທິດຕາເວັນອອກ ສ່ຽງໃຕ້ FAÇADE SUD - EST



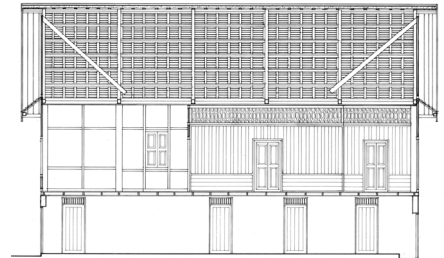
ຮູບດ້ານທິດຕາເວັນອອກ ສ່ຽງເໜືອ FAÇADE NORD - EST



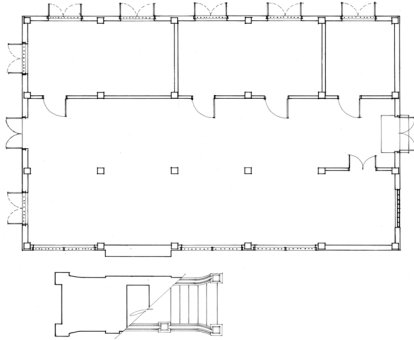
ຮູບດ້ານທິດຕາເວັນຕົກ ສ່ຽງເໜືອ FAÇADE NORD - OUEST



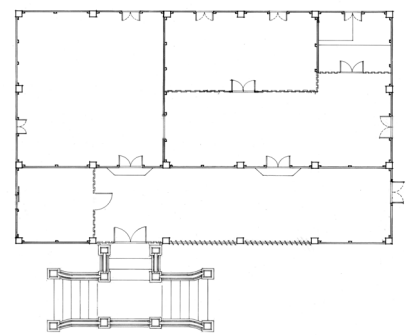
ຮູບຕັດທາງຂວາງ COUPE TRANSVERSALE



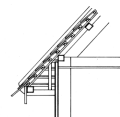
ຮູບຕັດທາງຍາວ COUPE LONGITUDINALE



ແຜນຜັງ ຊັ້ນ 0 PLAN REZ DE CHAUSSEE



ແຜນຜັງ ຊັ້ນ 1 PLAN ETAGE



ຮູບຂະຫຍາຍ DETAILS

ພາກທີ 1 : ແບບສະຖາປັດຕະຍະກຳ

ຫ້ອງການມໍລະດົກ

La Maison du Patrimoine

ຫຼວງພະບາງ ເມືອງມໍລະດົກໂລກຂອງອົງການ ອຸຍແນສະໂກ

Luang Prabang, Ville du Patrimoine mondial de l'UNESCO

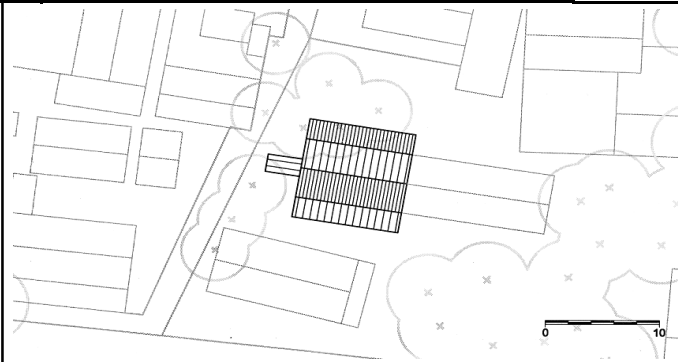
PARTIE 1: MODELES ARCHITECTURAUX

ແຜນຜັງປົກປັກຮັກສາ ແລະ ເຮັດໃຫ້ມີຄຸນຄ່າ

PLAN DE SAUVEGARDE ET DE MISE EN VALEUR



ແຜນຜັງບອກທີ່ຕັ້ງ PLAN DE LOCALISATION



ແຜນຜັງລວມ PLAN DE MASSE



ຮູບຕ້ານ ທິດຕາເວັນຕົກ ສ່ຽງໃຕ້ FAÇADE SUD - OUEST



ຮູບຕ້ານ ທິດຕາເວັນຕົກ ສ່ຽງເໜືອ FAÇADE NORD - OUEST



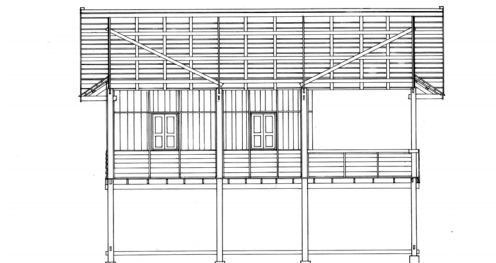
ຮູບຕ້ານ ທິດຕາເວັນອອກ ສ່ຽງເໜືອ FAÇADE NORD - EST



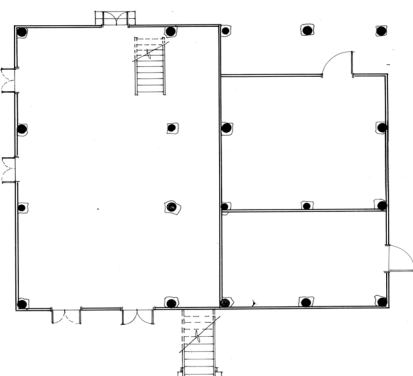
ຮູບຕ້ານ ທິດຕາເວັນອອກ ສ່ຽງໃຕ້ FAÇADE SUD - EST



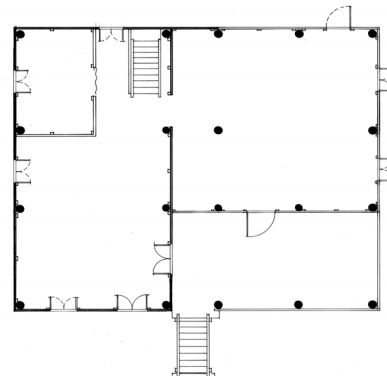
ຮູບຕັດທາງຂວາງ COUPE TRANSVERSALE



ຮູບຕັດທາງຍາວ COUPE LONGITUDINALE



ແຜນຜັງ ຊັ້ນ 0 PLAN REZ DE CHAUSSEE



ແຜນຜັງ ຊັ້ນ 1 PLAN ETAGE



ຮູບຂະໜາຍ DETAILS





ແຜນຜັງບອກທີ່ຕັ້ງ PLAN DE LOCALISATION



ແຜນຜັງລວມ PLAN DE MASSE



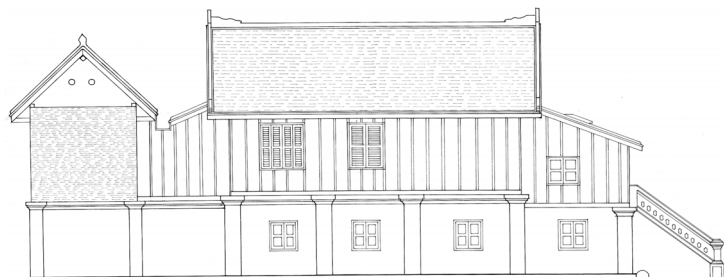
ຮູບດ້ານ ທິດຕາເວັນອອກ ສ່ຽງເໜືອ FAÇADE NORD - EST



ຮູບດ້ານ ທິດຕາເວັນອອກ ສ່ຽງໃຕ້ FAÇADE SUD - EST



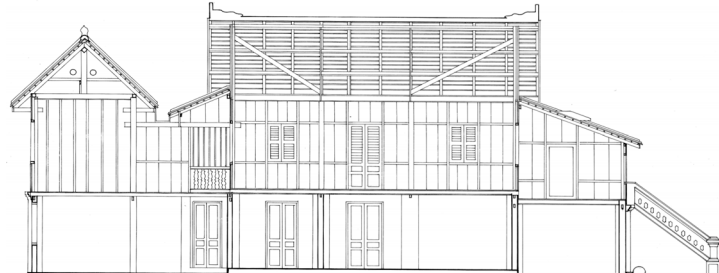
ຮູບດ້ານ ທິດຕາເວັນຕົກ ສ່ຽງໃຕ້ FAÇADE SUD - OUEST



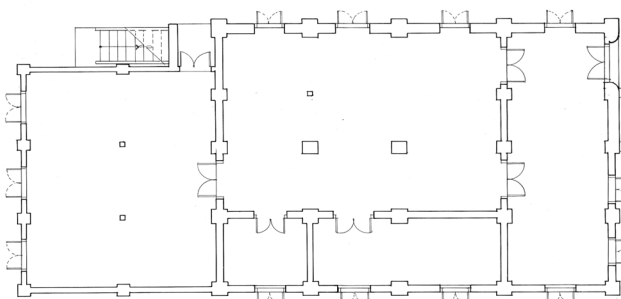
ຮູບດ້ານ ທິດຕາເວັນຕົກ ສ່ຽງເໜືອ FAÇADE NORD - OUEST



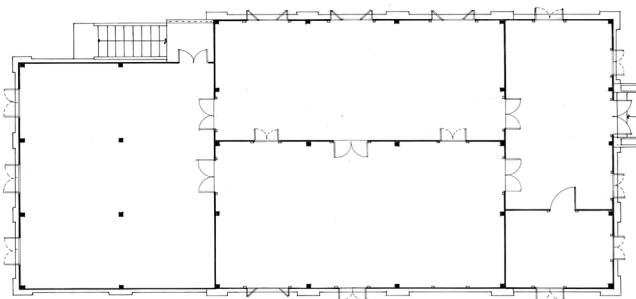
ຮູບຕັດທາງຂວາງ COUPE TRANSVERSALE



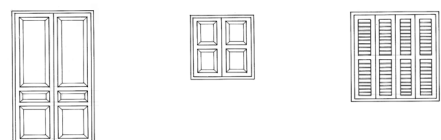
ຮູບຕັດທາງຍາວ COUPE LONGITUDINALE



ແຜນຜັງ ຊັ້ນ 0 PLAN REZ DE CHAUSSEE



ແຜນຜັງ ຊັ້ນ 1 PLAN ETAGE



ຮູບຂະໜາຍ DETAILS

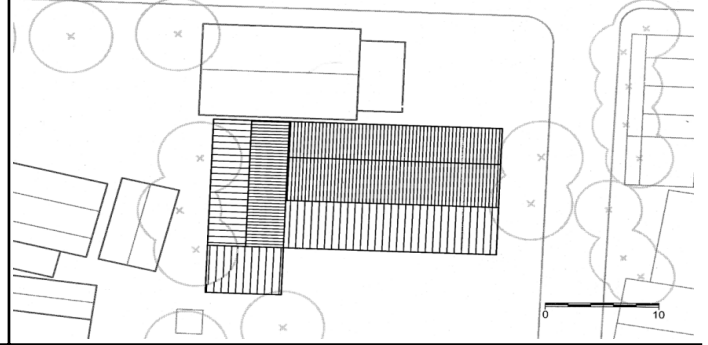


ພາກທີ 1 : ແບບສະຖາປັດຕະຍະກຳ

PARTIE 1: MODELES ARCHITECTURAUX



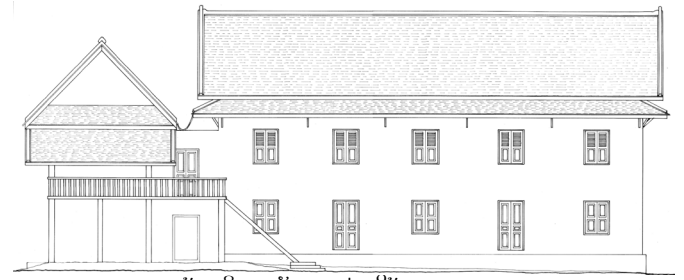
ແຜນຜັງບອກທີ່ຕັ້ງ PLAN DE LOCALISATION



ແຜນຜັງລວມ PLAN DE MASSE



ຮູບຕົ້ນ ທິດຕາເວັນອອກ ສ່ຽງເໜືອ FAÇADE NORD - EST



ຮູບຕົ້ນ ທິດຕາເວັນອອກ ສ່ຽງໃຕ້ FAÇADE SUD - EST



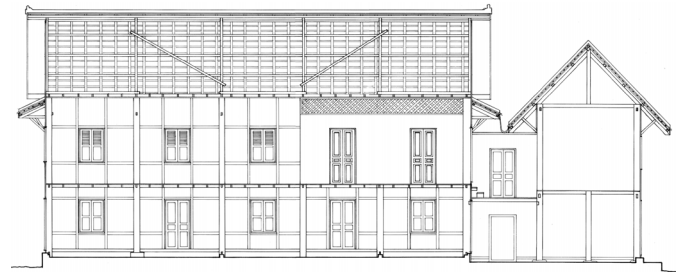
ຮູບຕົ້ນ ທິດຕາເວັນຕົກ ສ່ຽງໃຕ້ FAÇADE SUD - OUEST



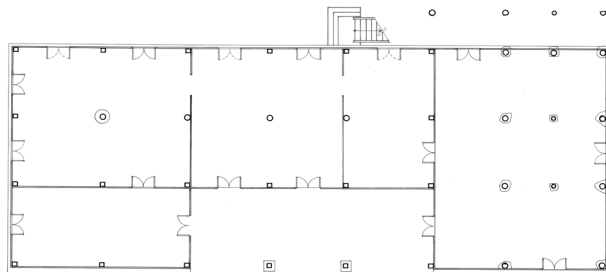
ຮູບຕົ້ນ ທິດຕາເວັນຕົກ ສ່ຽງເໜືອ FAÇADE NORD - OUEST



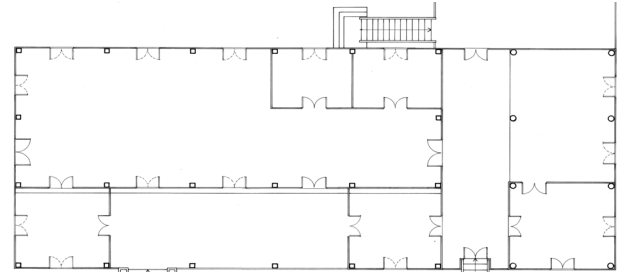
ຮູບຕັດທາງຂວາງ COUPE TRANSVERSALE



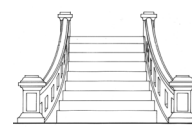
ຮູບຕັດທາງຍາວ COUPE LONGITUDINALE



ແຜນຜັງ ຊັ້ນ 0 PLAN REZ DE CHAUSSEE



ແຜນຜັງ ຊັ້ນ 1 PLAN ETAGE



ຮູບຂະຫຍາຍ DETAILS

ພາກທີ 1 : ແບບສະຖາປັດຕະຍະກຳ

ຫ້ອງການນໍລະດົກ
La Maison du Patrimoine

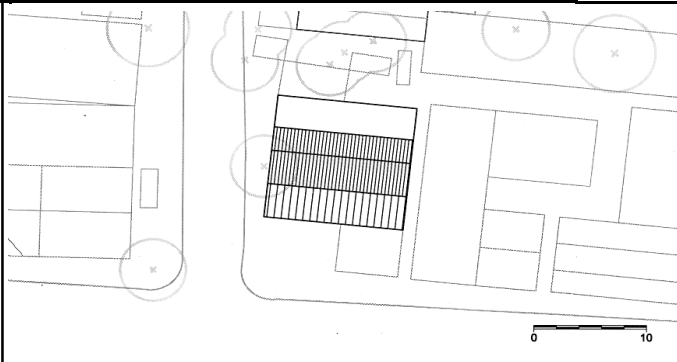
ຫຼວງພະບາງ ເມືອງນໍລະດົກໂລກຂອງອົງການ ອຸຍແນສະໂກ
Luang Prabang, Ville du Patrimoine mondial de l'UNESCO

PARTIE 1: MODELES ARCHITECTURAUX

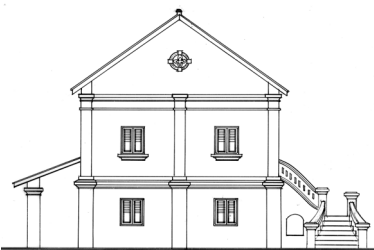
ແຜນຜັງປົກປັກຮັກສາ ແລະ ເຮັດໃຫ້ມີຄຸນຄ່າ
PLAN DE SAUVEGARDE ET DE MISE EN VALEUR



ແຜນຜັງບອກທີ່ຕັ້ງ PLAN DE LOCALISATION



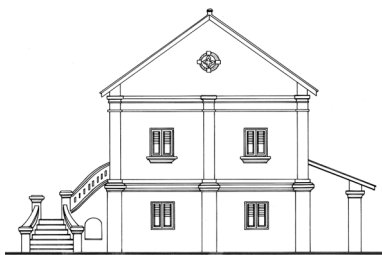
ແຜນຜັງລວມ PLAN DE MASSE



ຮູບດ້ານ ທິດຕາເວັນຕົກ ສ່ຽງໃຕ້ FAÇADE SUD - OUEST



ຮູບດ້ານ ທິດຕາເວັນອອກ ສ່ຽງໃຕ້ FAÇADE SUD - EST



ຮູບດ້ານ ທິດຕາເວັນອອກ ສ່ຽງເໜືອ FAÇADE NORD - EST



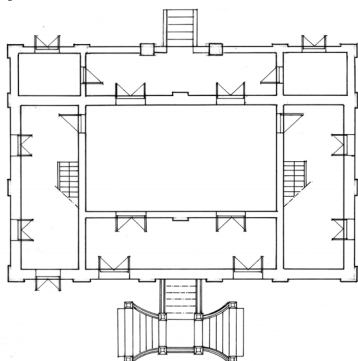
ຮູບດ້ານ ທິດຕາເວັນຕົກ ສ່ຽງເໜືອ FAÇADE NORD - OUEST



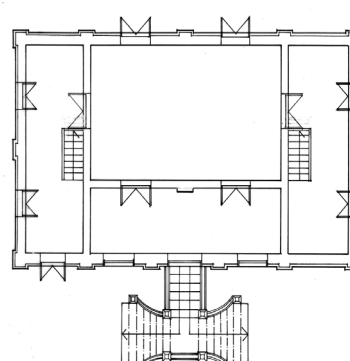
ຮູບຕັດທາງຂວາງ COUPE TRANSVERSALE



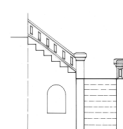
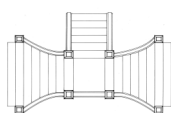
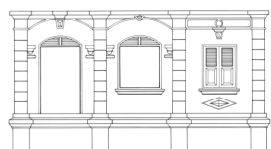
ຮູບຕັດທາງຍາວ COUPE LONGITUDINALE



ແຜນຜັງ ຊັ້ນ 0 PLAN REZ DE CHAUSSEE



ແຜນຜັງ ຊັ້ນ 1 PLAN ETAGE



ຮູບຂະຫຍາຍ DETAILS

ພາກທີ 1 : ແບບສະຖາປັດຕະຍະກຳ

ຫ້ອງການນິລະດົກ
La Maison du Patrimoine

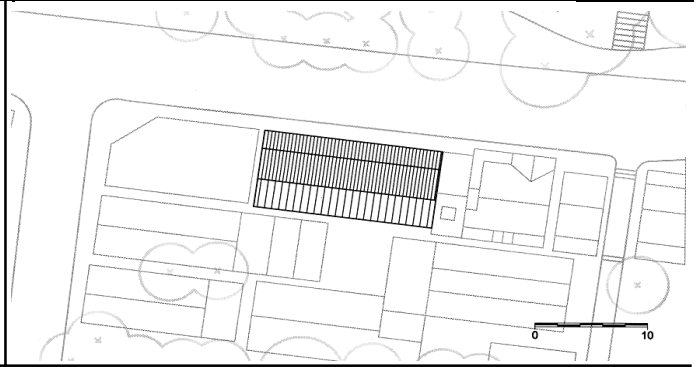
ຫຼວງພະບາງ ເມືອງນິລະດົກໂລກຂອງອົງການ ອຸຍແນສະໂກ
Luang Prabang, Ville du Patrimoine mondial de l'UNESCO

PARTIE 1: MODELES ARCHITECTURAUX

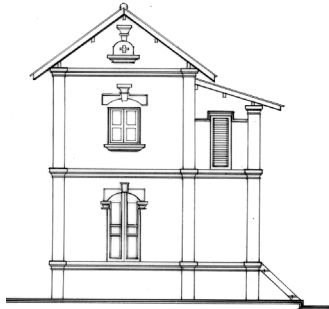
ແຜນຜັງປົກປັກຮັກສາ ແລະ ເຮັດໃຫ້ມີຄຸນຄ່າ
PLAN DE SAUVEGARDE ET DE MISE EN VALEUR



ແຜນຜັງບອກທີ່ຕັ້ງ PLAN DE LOCALISATION



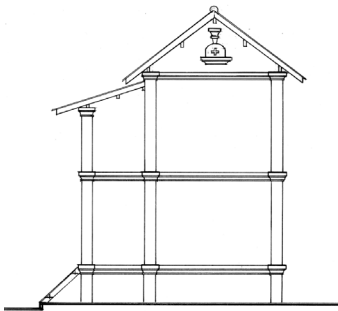
ແຜນຜັງລວມ PLAN DE MASSE



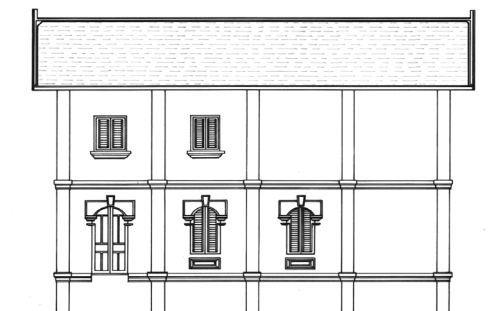
ຮູບດ້ານ ທິດຕາເວັນອອກ ສ່ຽງເໜືອ FAÇADE NORD - EST



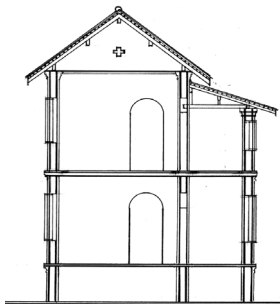
ຮູບດ້ານ ທິດຕາເວັນຕົກ ສ່ຽງເໜືອ FAÇADE NORD - OUEST



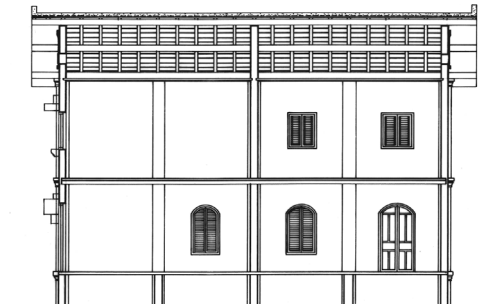
ຮູບດ້ານ ທິດຕາເວັນຕົກ ສ່ຽງໃຕ້ FAÇADE SUD - OUEST



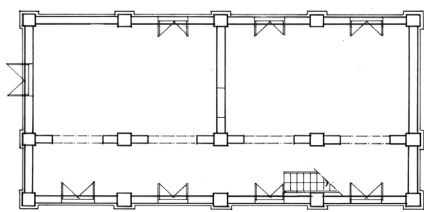
ຮູບດ້ານ ທິດຕາເວັນອອກ ສ່ຽງໃຕ້ FAÇADE SUD - EST



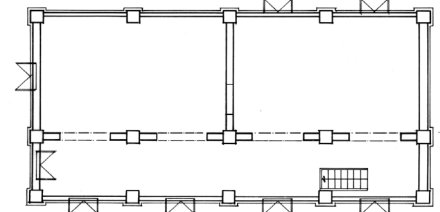
ຮູບຕັດທາງຂວາງ COUPE TRANSVERSALE



ຮູບຕັດທາງຍາວ COUPE LONGITUDINALE



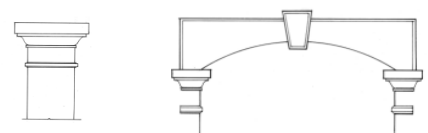
ແຜນຜັງ ຊັ້ນ 0 PLAN REZ DE CHAUSSEE



ແຜນຜັງ ຊັ້ນ 1 PLAN ETAGE



ຮູບຂະໜາຍ DETAILS



ພາກທີ 1 : ແບບສະຖາປັດຕະຍະກຳ

ຫ້ອງການມໍລະດົກ
 La Maison du Patrimoine

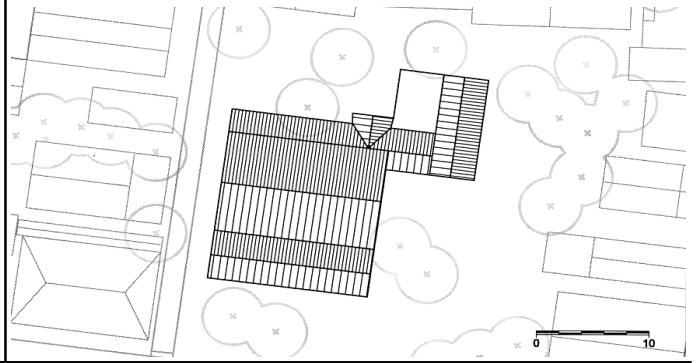
ຫຼວງພະບາງ ເມືອງມໍລະດົກໂລກຂອງອົງການ ອຸຍແນສະໂກ
 Luang Prabang, Ville du Patrimoine mondial de l'UNESCO

PARTIE 1: MODELES ARCHITECTURAUX

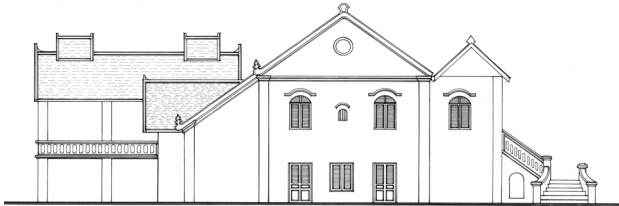
ແຜນຜັງປົກປັກຮັກສາ ແລະ ເຮັດໃຫ້ມີຄຸນຄ່າ
 PLAN DE SAUVEGARDE ET DE MISE EN VALEUR



ແຜນຜັງບອກທີ່ຕັ້ງ PLAN DE LOCALISATION



ແຜນຜັງລວມ PLAN DE MASSE



ຮູບດ້ານ ທິດຕາເວັນຕົກ ສ່ຽງໃຕ້ FAÇADE SUD - OUEST



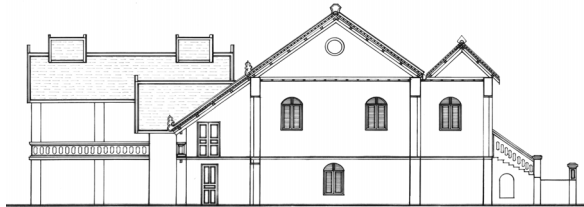
ຮູບດ້ານ ທິດຕາເວັນອອກ ສ່ຽງໃຕ້ FAÇADE SUD - EST



ຮູບດ້ານ ທິດຕາເວັນອອກ ສ່ຽງເໜືອ FAÇADE NORD - EST



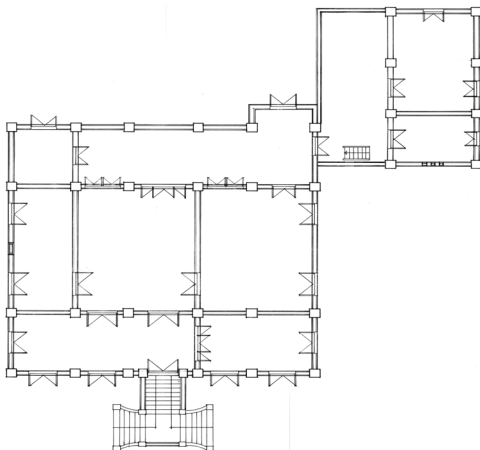
ຮູບດ້ານ ທິດຕາເວັນຕົກ ສ່ຽງເໜືອ FAÇADE NORD - OUEST



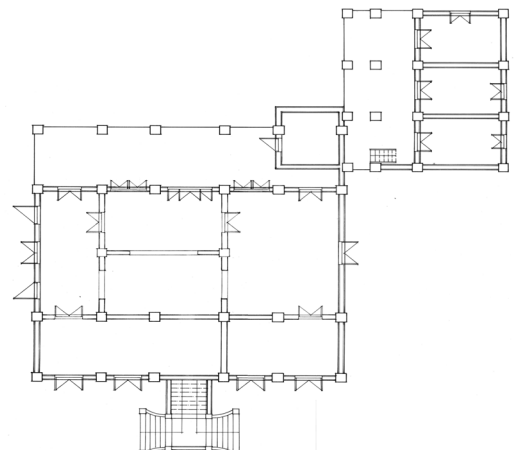
ຮູບຕັດທາງຂວາງ COUPE TRANSVERSALE



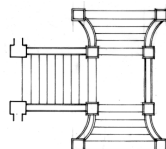
ຮູບຕັດທາງຍາວ COUPE LONGITUDINALE



ແຜນຜັງ ຊັ້ນ 0 PLAN REZ DE CHAUSSEE



ແຜນຜັງ ຊັ້ນ 1 PLAN ETAGE



ຮູບຂະໜາຍ DETAILS

ພາກທີ 1 : ແບບສະຖາປັດຕະຍະກຳ

ຫ້ອງການມໍລະດົກ
 La Maison du Patrimoine

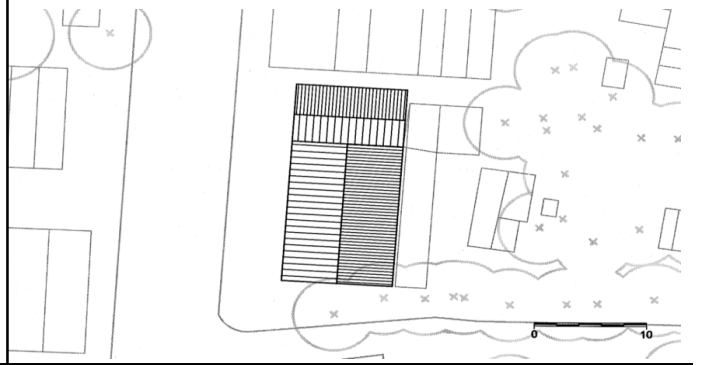
ຫຼວງພະບາງ ເມືອງມໍລະດົກໂລກຂອງອົງການ ອຸຍແນສະໂກ
 Luang Prabang, Ville du Patrimoine mondial de l'UNESCO

PARTIE 1: MODELES ARCHITECTURAUX

ແຜນຜັງປົກປັກຮັກສາ ແລະ ເຮັດໃຫ້ມີຄຸນຄ່າ
 PLAN DE SAUVEGARDE ET DE MISE EN VALEUR



ແຜນຜັງບອກທີ່ຕັ້ງ PLAN DE LOCALISATION



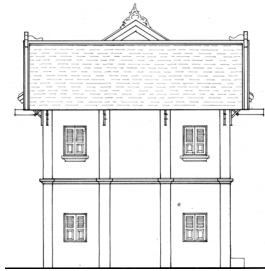
ແຜນຜັງລວມ PLAN DE MASSE



ຮູບດ້ານ ທິດຕາເວັນອອກ ສ່ຽງໃຕ້ FAÇADE SUD - EST



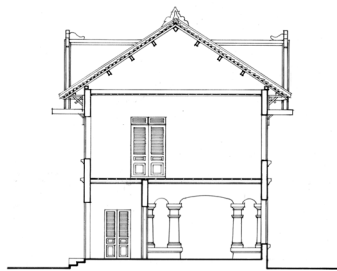
ຮູບດ້ານ ທິດຕາເວັນອອກ ສ່ຽງເໜືອ FAÇADE NORD - EST



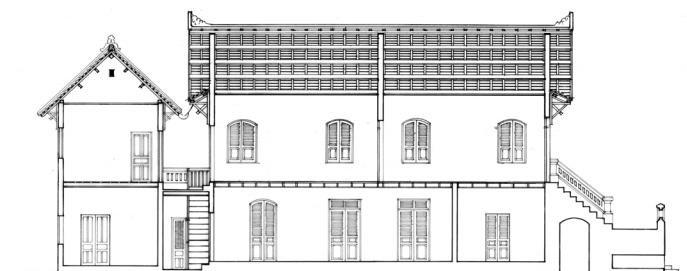
ຮູບດ້ານ ທິດຕາເວັນຕົກ ສ່ຽງເໜືອ FAÇADE NORD - OUEST



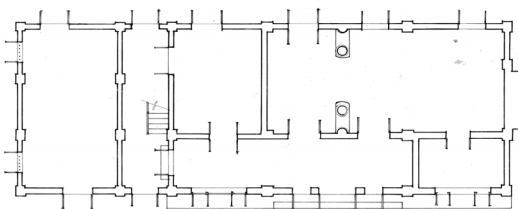
ຮູບດ້ານ ທິດຕາເວັນຕົກ ສ່ຽງໃຕ້ FAÇADE SUD - OUEST



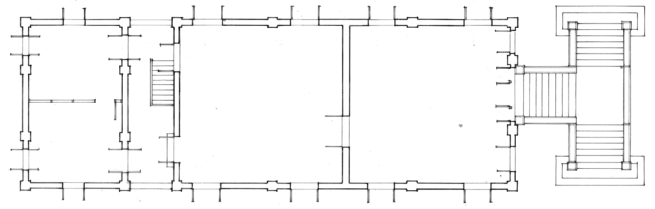
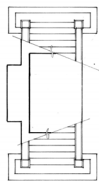
ຮູບຕັດໜາງຂວາງ COUPE TRANSVERSALE



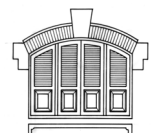
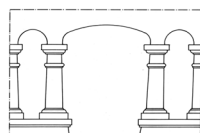
ຮູບຕັດໜາງຍາວ COUPE LONGITUDINALE



ແຜນຜັງ ຊັ້ນ 0 PLAN REZ DE CHAUSSEE



ແຜນຜັງ ຊັ້ນ 1 PLAN ETAGE



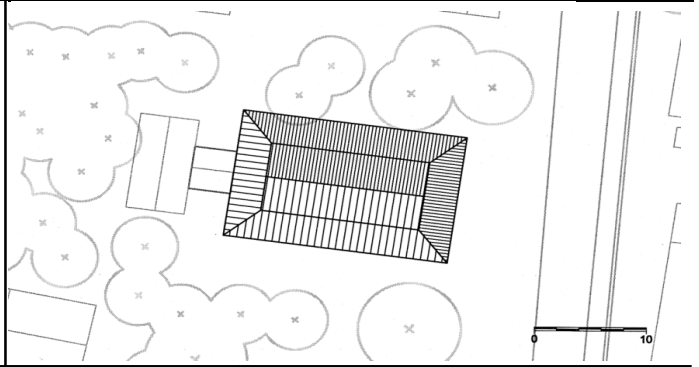
ຮູບຂະໜາຍ DETAILS

ພາກທີ 1 : ແບບສະຖາປັດຕະຍະກຳ

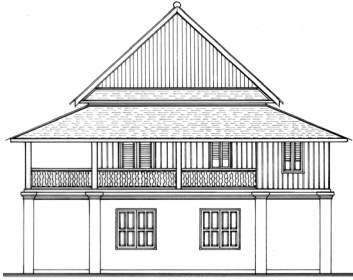
PARTIE 1: MODELES ARCHITECTURAUX



ແຜນຜັງບອກທີ່ຕັ້ງ PLAN DE LOCALISATION



ແຜນຜັງລວມ PLAN DE MASSE



ຮູບດ້ານ ທິດຕາເວັນອອກ ສ່ຽງເໜືອ FAÇADE NORD - EST



ຮູບດ້ານ ທິດຕາເວັນອອກ ສ່ຽງໃຕ້ FAÇADE SUD - EST



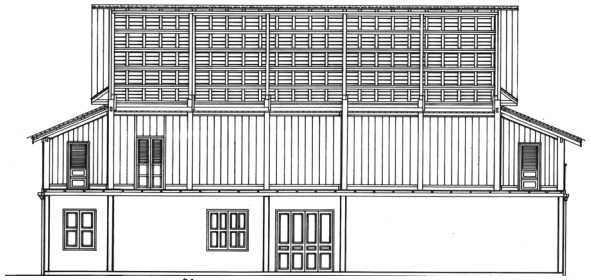
ຮູບດ້ານ ທິດຕາເວັນຕົກ ສ່ຽງໃຕ້ FAÇADE SUD - OUEST



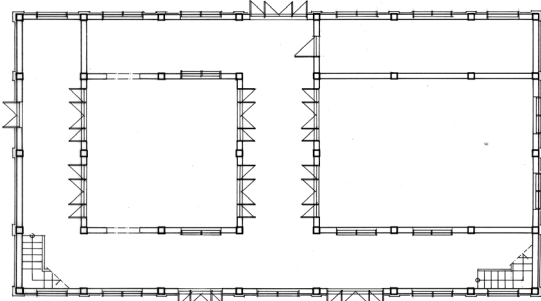
ຮູບດ້ານ ທິດຕາເວັນຕົກ ສ່ຽງເໜືອ FAÇADE NORD - OUEST



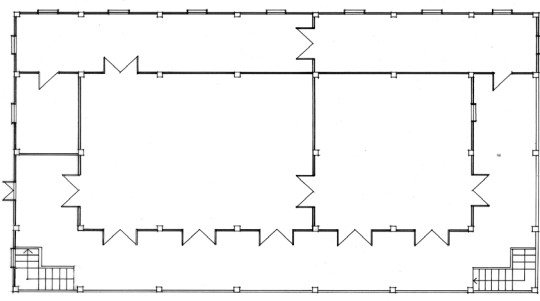
ຮູບຕັດໜາງຂວາງ COUPE TRANSVERSALE



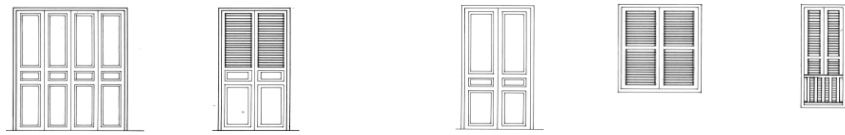
ຮູບຕັດໜາງຍາວ COUPE LONGITUDINALE



ແຜນຜັງ ຊັ້ນ 0 PLAN REZ DE CHAUSSEE



ແຜນຜັງ ຊັ້ນ 1 PLAN ETAGE



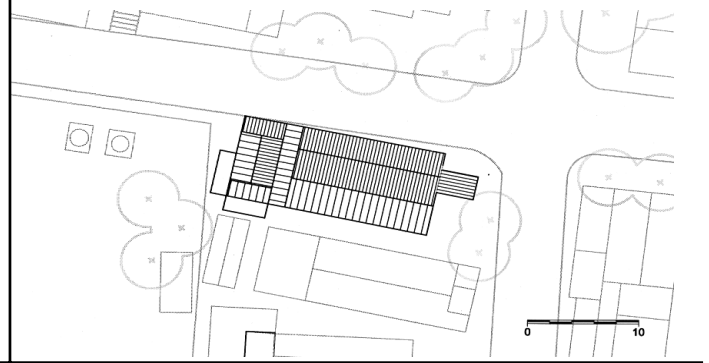
ຮູບຂະໜາຍ DETAILS

ພາກທີ 1 : ແບບສະຖາປັດຕະຍະກຳ

PARTIE 1: MODELES ARCHITECTURAUX



ແຜນຜັງບອກທີ່ຕັ້ງ PLAN DE LOCALISATION



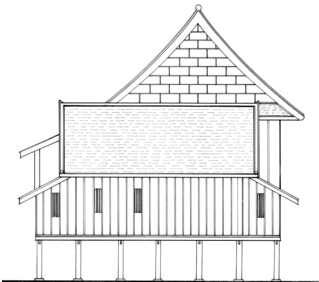
ແຜນຜັງລວມ PLAN DE MASSE



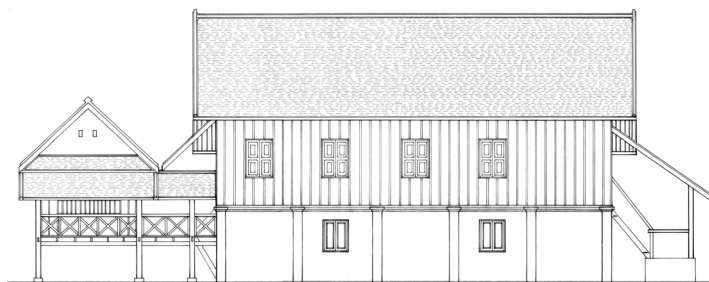
ຮູບດ້ານ ທິດຕາເວັນອອກ ສ່ຽງເໜືອ FAÇADE NORTH - EAST



ຮູບດ້ານ ທິດຕາເວັນຕົກ ສ່ຽງເໜືອ FAÇADE NORTH - OUEST



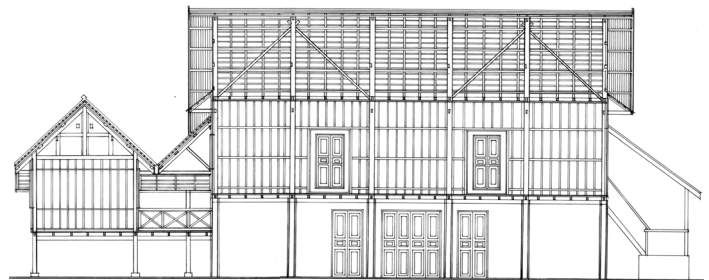
ຮູບດ້ານ ທິດຕາເວັນຕົກ ສ່ຽງໃຕ້ FAÇADE SOUTH - OUEST



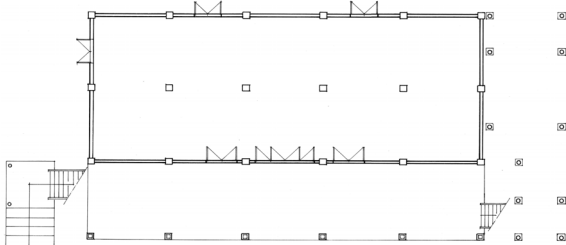
ຮູບດ້ານ ທິດຕາເວັນອອກ ສ່ຽງໃຕ້ FAÇADE SOUTH - EAST



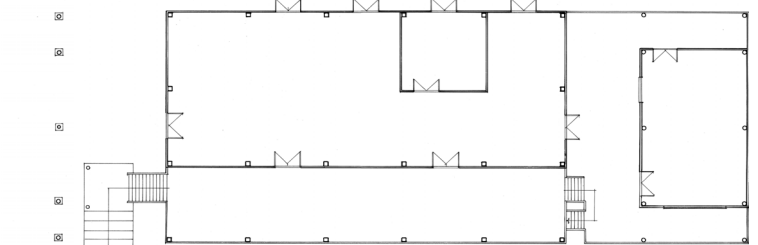
ຮູບຕັດທາງຂວາງ COUPE TRANSVERSALE



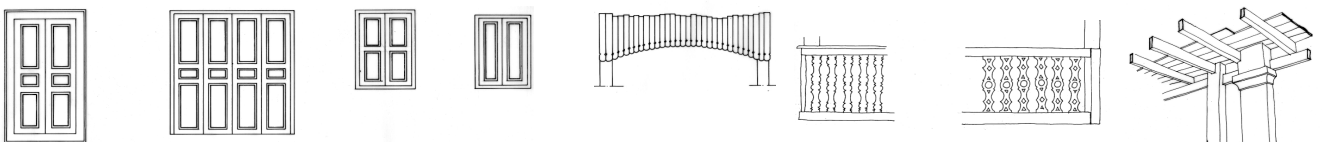
ຮູບຕັດທາງຍາວ COUPE LONGITUDINALE



ແຜນຜັງ ຊັ້ນ 0 PLAN REZ DE CHAUSSEE



ແຜນຜັງ ຊັ້ນ 1 PLAN ETAGE



ຮູບຂະຫຍາຍ DETAILS

ພາກທີ 1 : ແບບສະຖາປັດຕະຍະກຳ

ຫ້ອງການນໍລະດົກ

La Maison du Patrimoine

ຫຼວງພະບາງ ມີອົງມໍລະດົກໂລກຂອງອົງການ ອຸຍແນສະໂກ

Luang Prabang, Ville du Patrimoine mondial de l'UNESCO

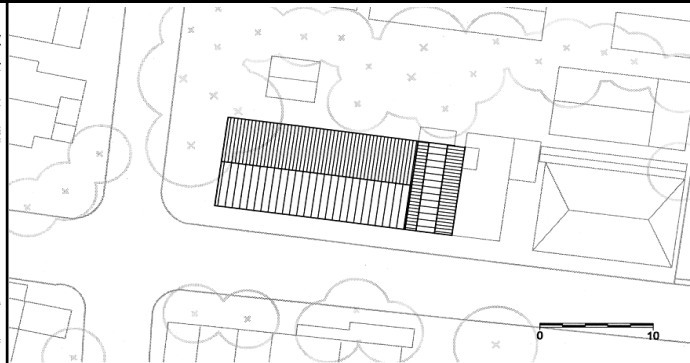
PARTIE 1: MODELES ARCHITECTURAUX

ແຜນຜັງປົກປັກຮັກສາ ແລະ ເຮັດໃຫ້ມີຄຸນຄ່າ

PLAN DE SAUVEGARDE ET DE MISE EN VALEUR



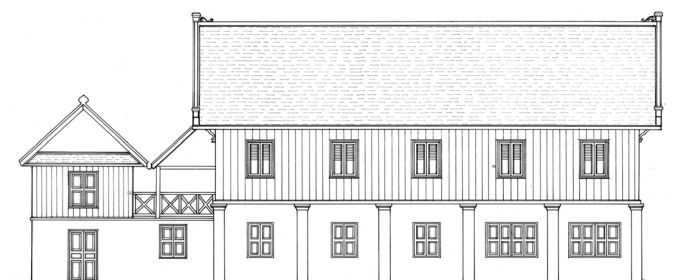
ແຜນຜັງບອກທີ່ຕັ້ງ PLAN DE LOCALISATION



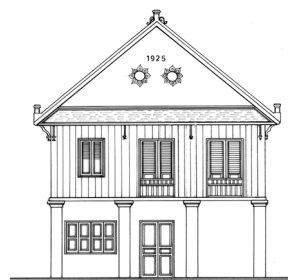
ແຜນຜັງລວມ PLAN DE MASSE



ຮູບດ້ານ ທິດຕາເວັນອອກ ສ່ຽງເໜືອ FAÇADE NORD - EST



ຮູບດ້ານ ທິດຕາເວັນຕົກ ສ່ຽງເໜືອ FAÇADE NORD - OUEST



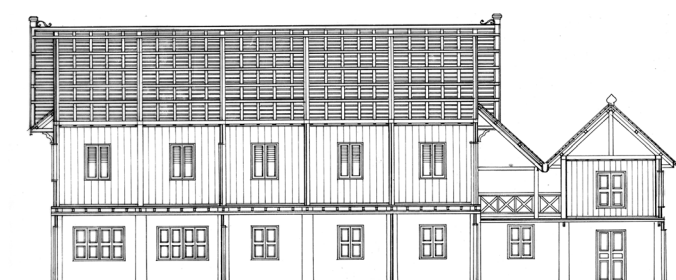
ຮູບດ້ານ ທິດຕາເວັນຕົກ ສ່ຽງໃຕ້ FAÇADE SUD - OUEST



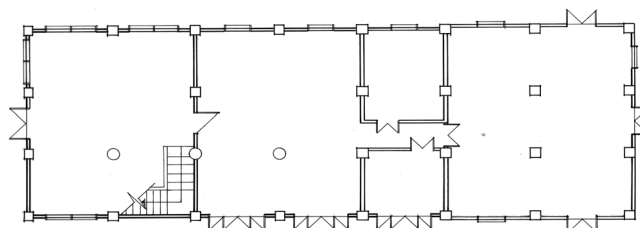
ຮູບດ້ານ ທິດຕາເວັນອອກ ສ່ຽງໃຕ້ FAÇADE SUD - EST



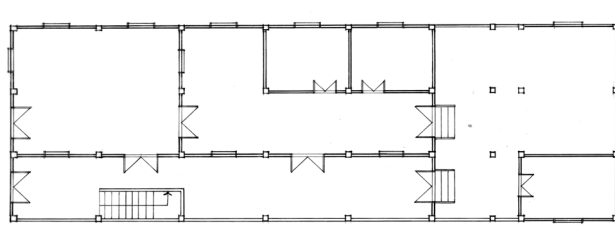
ຮູບຕັດທາງຂວາງ COUPE TRANSVERSALE



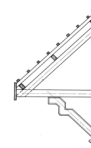
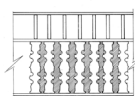
ຮູບຕັດທາງຍາວ COUPE LONGITUDINALE



ແຜນຜັງ ຊັ້ນ 0 PLAN REZ DE CHAUSSEE



ແຜນຜັງ ຊັ້ນ 1 PLAN ETAGE



ຮູບຂະຫຍາຍ DETAILS

ພາກທີ 1 : ແບບສະຖາປັດຕະຍະກຳ

ຫ້ອງການມໍລະດົກ

La Maison du Patrimoine

ຫຼວງພະບາງ ເມືອງມໍລະດົກໂລກຂອງອົງການ ອຸຍແນສະໂກ

Luang Prabang, Ville du Patrimoine mondial de l'UNESCO

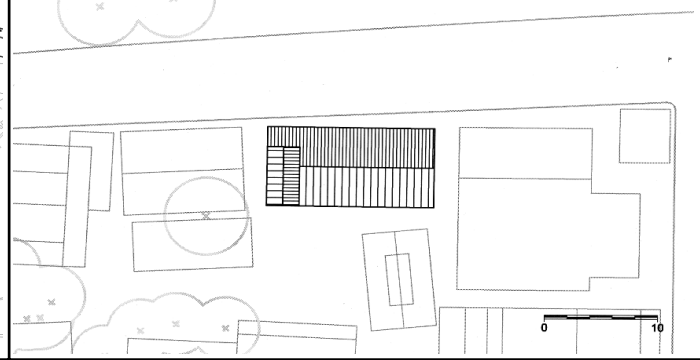
PARTIE 1: MODELES ARCHITECTURAUX

ແຜນຜັງປົກປັກຮັກສາ ແລະ ເຮັດໃຫ້ມີຄຸນຄ່າ

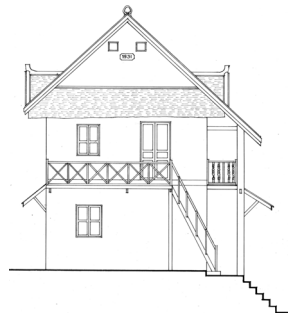
PLAN DE SAUVEGARDE ET DE MISE EN VALEUR



ແຜນຜັງບອກທີ່ຕັ້ງ PLAN DE LOCALISATION



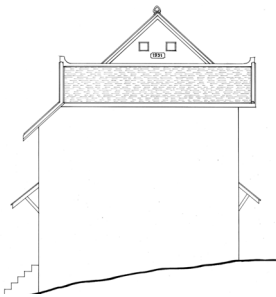
ແຜນຜັງລວມ PLAN DE MASSE



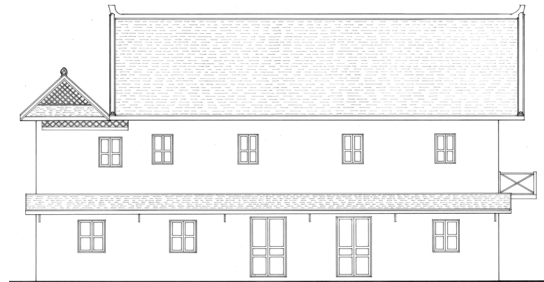
ຮູບຕ້ານ ທິດຕາເວັນອອກ ສ່ຽງເໜືອ FAÇADE NORD - EST



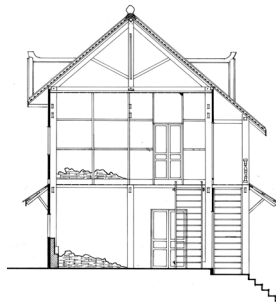
ຮູບຕ້ານ ທິດຕາເວັນຕົກ ສ່ຽງເໜືອ FAÇADE NORD - OUEST



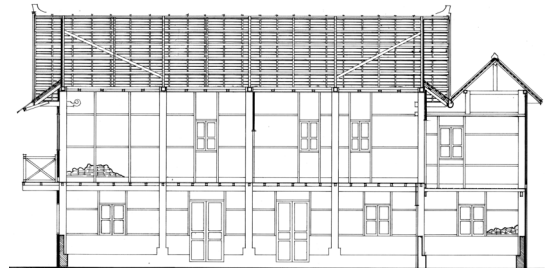
ຮູບຕ້ານ ທິດຕາເວັນຕົກ ສ່ຽງໃຕ້ FAÇADE SUD - OUEST



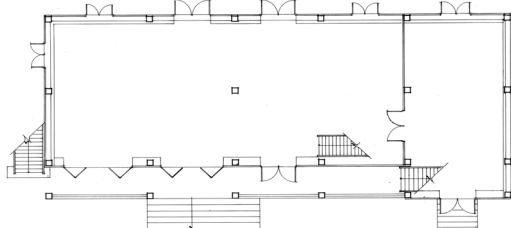
ຮູບຕ້ານ ທິດຕາເວັນອອກ ສ່ຽງໃຕ້ FAÇADE SUD - EST



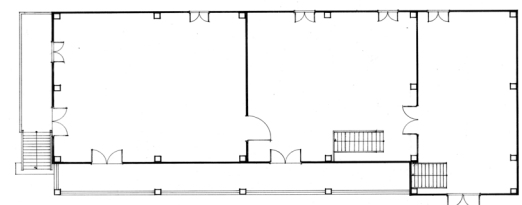
ຮູບຕັດທາງຂວາງ COUPE TRANSVERSALE



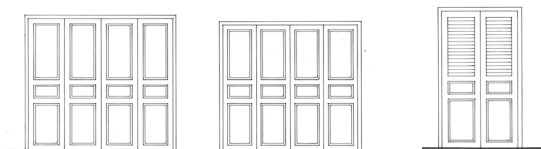
ຮູບຕັດທາງຍາວ COUPE LONGITUDINALE



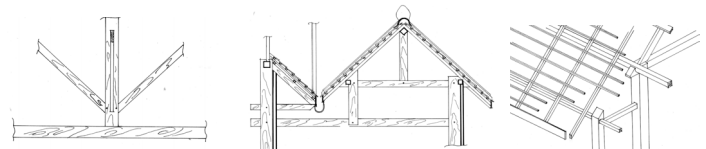
ແຜນຜັງ ຊັ້ນ 0 PLAN REZ DE CHAUSSEE



ແຜນຜັງ ຊັ້ນ 1 PLAN ETAGE



ຮູບຂະຫຍາຍ DETAILS



ພາກທີ 1 : ແບບສະຖາປັດຕະຍະກຳ

PARTIE 1: MODELES ARCHITECTURAUX

ຫ້ອງການນິລະດົກ

ຫຼວງພະບາງ ເມືອງນິລະດົກໂລກຂອງອົງການ ອຸຍແນສະໂກ

ແຜນຜັງປົກປັກຮັກສາ ແລະ ເຮັດໃຫ້ມີຄຸນຄ່າ

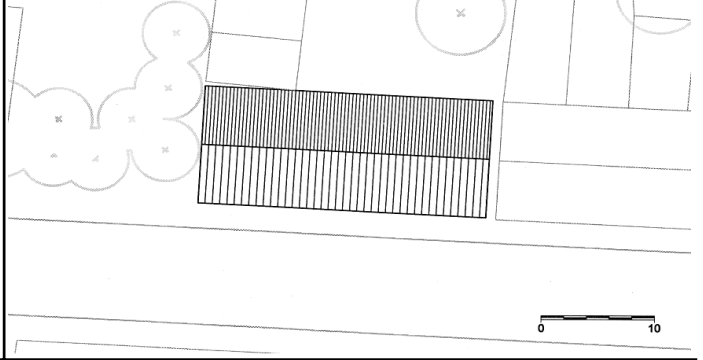
La Maison du Patrimoine

Luang Prabang, Ville du Patrimoine mondial de l'UNESCO

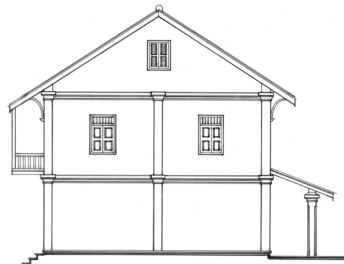
PLAN DE SAUVEGARDE ET DE MISE EN VALEUR



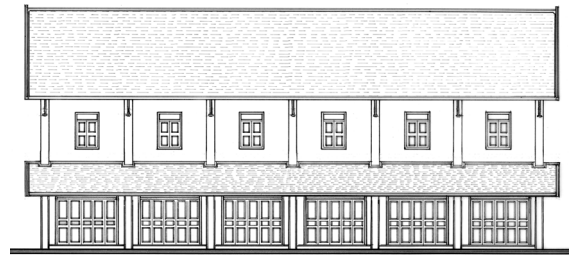
ແຜນຜັງບອກທີ່ຕັ້ງ PLAN DE LOCALISATION



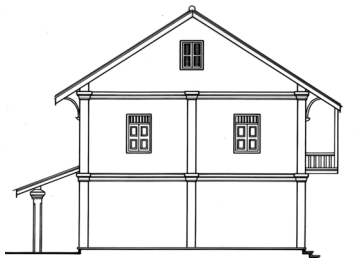
ແຜນຜັງລວມ PLAN DE MASSE



ຮູບຕ້ານ ທິດຕາເວັນຕົກ ສ່ຽງໃຕ້ FAÇADE SUD - OUEST



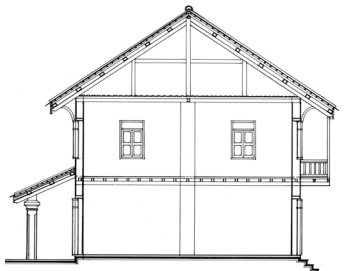
ຮູບຕ້ານ ທິດຕາເວັນອອກ ສ່ຽງໃຕ້ FAÇADE SUD - EST



ຮູບຕ້ານ ທິດຕາເວັນອອກ ສ່ຽງເໜືອ FAÇADE NORD - EST



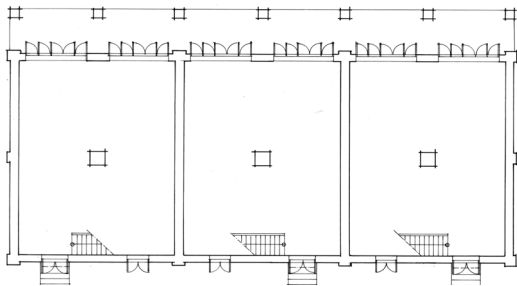
ຮູບຕ້ານ ທິດຕາເວັນຕົກ ສ່ຽງເໜືອ FAÇADE NORD - OUEST



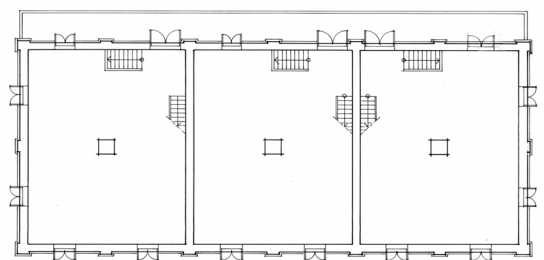
ຮູບຕັດທາງຂວາງ COUPE TRANSVERSALE



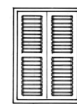
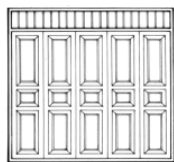
ຮູບຕັດທາງຍາວ COUPE LONGITUDINALE



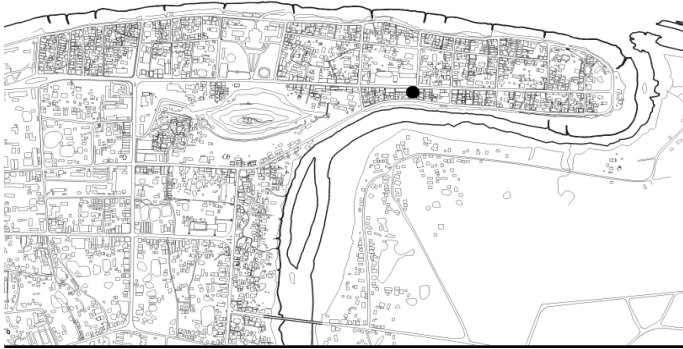
ແຜນຜັງ ຊັ້ນ 0 PLAN REZ DE CHAUSSEE



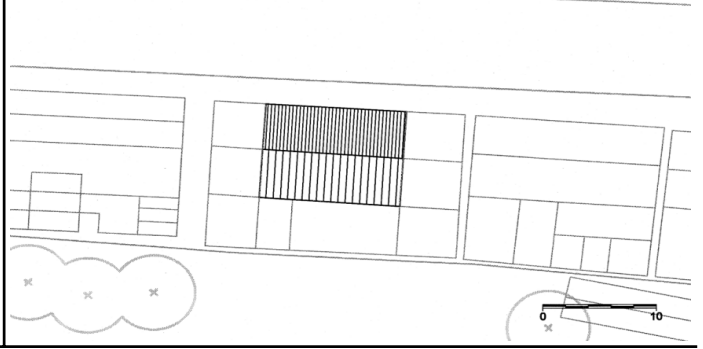
ແຜນຜັງ ຊັ້ນ 1 PLAN ETAGE



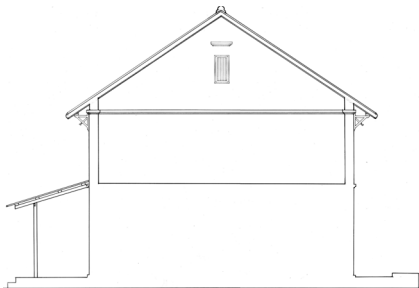
ຮູບຂະຫຍາຍ DETAILS



ແຜນຜັງບອກທີ່ຕັ້ງ PLAN DE LOCALISATION



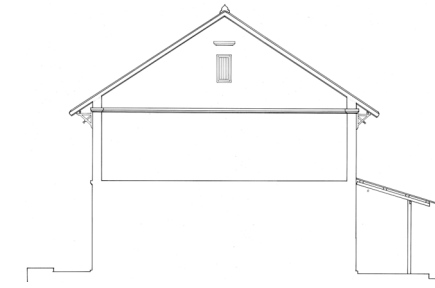
ແຜນຜັງລວມ PLAN DE MASSE



ຮູບດ້ານ ທິດຕາເວັນຕົກ ສ່ຽງໃຕ້ FAÇADE SUD - OUEST



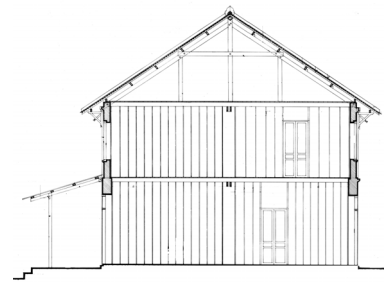
ຮູບດ້ານ ທິດຕາເວັນຕົກ ສ່ຽງເໜືອ FAÇADE NORD - OUEST



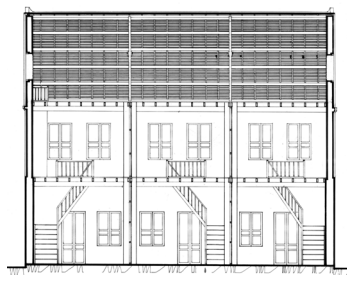
ຮູບດ້ານ ທິດຕາເວັນອອກ ສ່ຽງເໜືອ FAÇADE NORD - EST



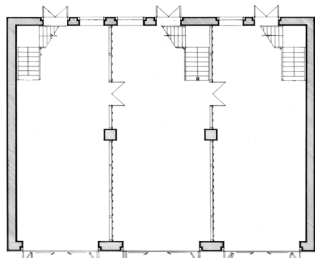
ຮູບດ້ານ ທິດຕາເວັນອອກ ສ່ຽງໃຕ້ FAÇADE SUD - EST



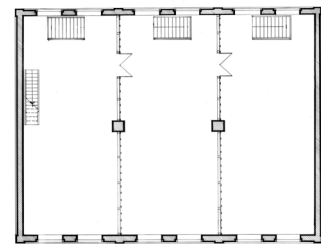
ຮູບຕັດທາງຂວາງ COUPE TRANSVERSALE



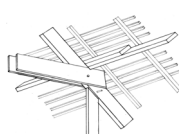
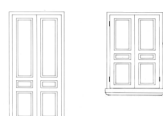
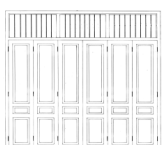
ຮູບຕັດທາງຍາວ COUPE LONGITUDINALE



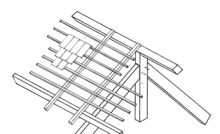
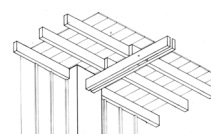
ແຜນຜັງ ຊັ້ນ 0 PLAN REZ DE CHAUSSEE



ແຜນຜັງ ຊັ້ນ 1 PLAN ETAGE



ຮູບຂະຫຍາຍ DETAILS



ພາກທີ 1 : ແບບສະຖາປັດຕະຍະກຳ

ຫ້ອງການມໍລະດົກ
La Maison du Patrimoine

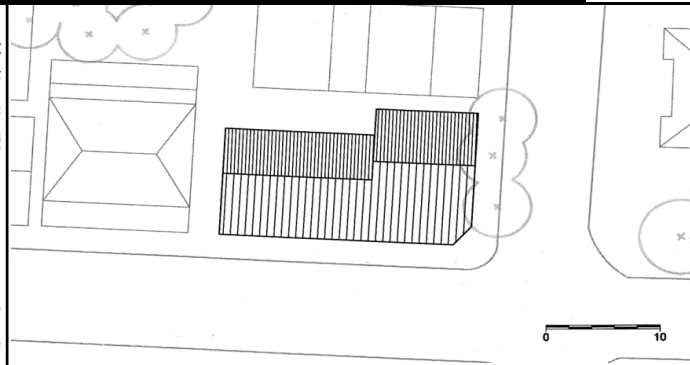
ຫຼວງພະບາງ ເມືອງມໍລະດົກໂລກຂອງອົງການ ອຸຍແນສະໂກ
Luang Prabang, Ville du Patrimoine mondial de l'UNESCO

PARTIE 1: MODELES ARCHITECTURAUX

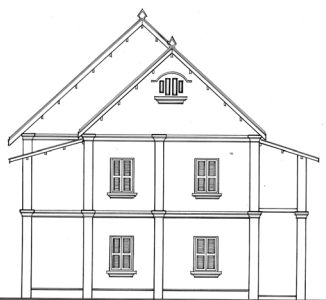
ແຜນຜັງປົກປັກຮັກສາ ແລະ ເຮັດໃຫ້ມີຄຸນຄ່າ
PLAN DE SAUVEGARDE ET DE MISE EN VALEUR



ແຜນຜັງບອກທີ່ຕັ້ງ PLAN DE LOCALISATION



ແຜນຜັງລວມ PLAN DE MASSE



ຮູບຕ້ານ ທິດຕາເວັນຕົກ ສ່ຽງໃຕ້ FAÇADE SUD - OUEST



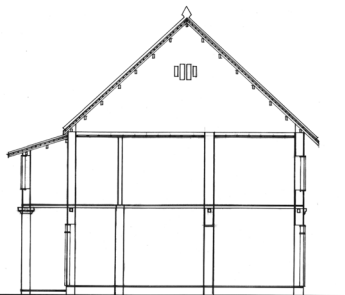
ຮູບຕ້ານ ທິດຕາເວັນອອກ ສ່ຽງໃຕ້ FAÇADE SUD - EST



ຮູບຕ້ານ ທິດຕາເວັນອອກ ສ່ຽງເໜືອ FAÇADE NORD - EST



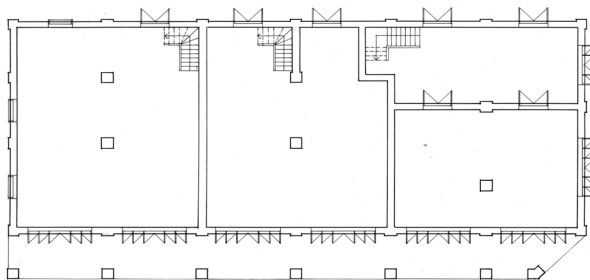
ຮູບຕ້ານ ທິດຕາເວັນຕົກ ສ່ຽງເໜືອ FAÇADE NORD - OUEST



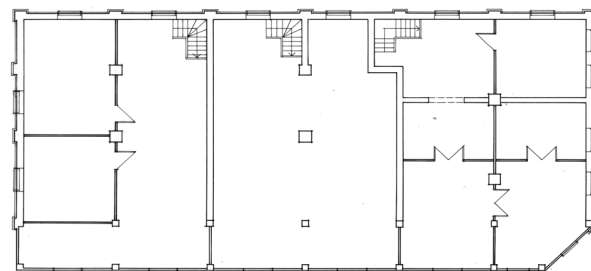
ຮູບຕັດໜາງຂວາງ COUPE TRANSVERSALE



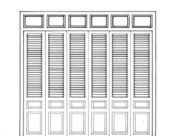
ຮູບຕັດໜາງຍາວ COUPE LONGITUDINALE



ແຜນຜັງ ຊັ້ນ 0 PLAN REZ DE CHAUSSEE



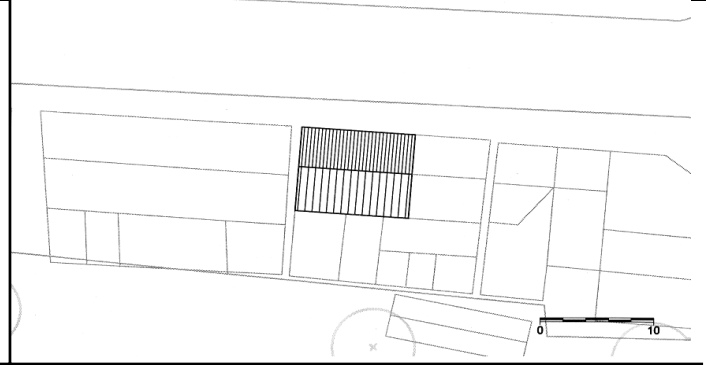
ແຜນຜັງ ຊັ້ນ 1 PLAN ETAGE



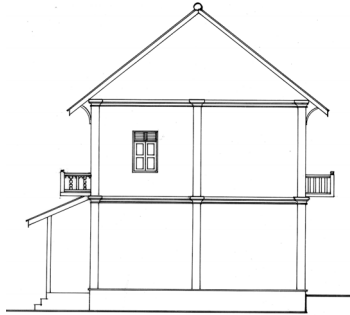
ຮູບຂະໜາຍ DETAILS



ແຜນຜັງບອກທີ່ຕັ້ງ PLAN DE LOCALISATION



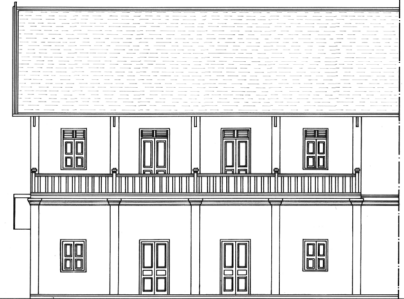
ແຜນຜັງລວມ PLAN DE MASSE



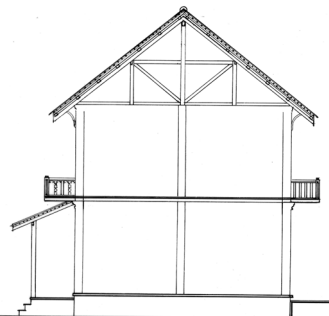
ຮູບຕ້ານ ທິດຕາເວັນຕົກ ສ່ຽງໃຕ້ FAÇADE SUD - OUEST



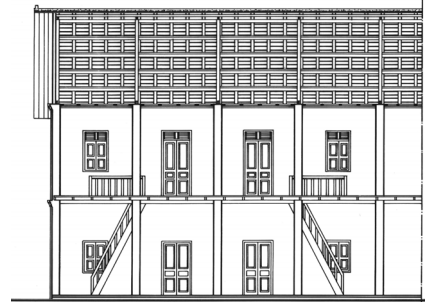
ຮູບຕ້ານ ທິດຕາເວັນຕົກ ສ່ຽງເໜືອ FAÇADE NORD - OUEST



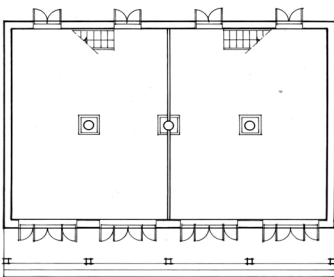
ຮູບຕ້ານ ທິດຕາເວັນອອກ ສ່ຽງໃຕ້ FAÇADE SUD - EST



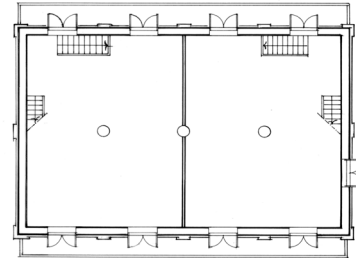
ຮູບຕັດທາງຂວາງ COUPE TRANSVERSALE



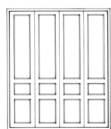
ຮູບຕັດທາງຍາວ COUPE LONGITUDINALE



ແຜນຜັງ ຊັ້ນ 0 PLAN REZ DE CHAUSSEE



ແຜນຜັງ ຊັ້ນ 1 PLAN ETAGE



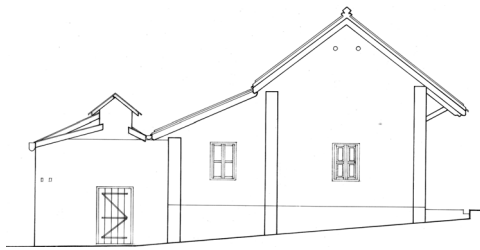
ຮູບຂະຫຍາຍ DETAILS



ແຜນຜັງບອກທີ່ຕັ້ງ PLAN DE LOCALISATION



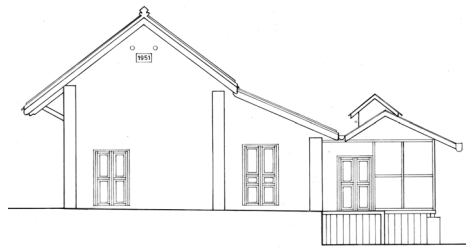
ແຜນຜັງລວມ PLAN DE MASSE



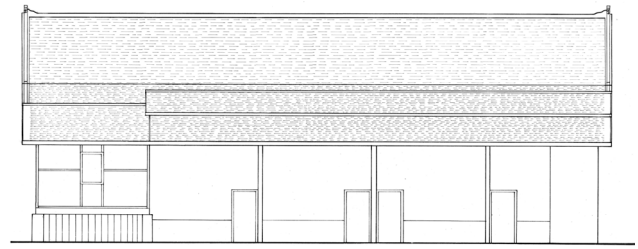
ຮູບດ້ານ ທິດຕາເວັນອອກ ສ່ຽງເໜືອ FAÇADE NORD - EST



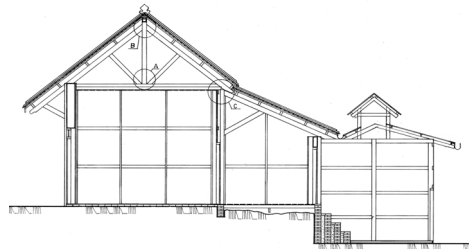
ຮູບດ້ານ ທິດຕາເວັນຕົກ ສ່ຽງເໜືອ FAÇADE NORD - OUEST



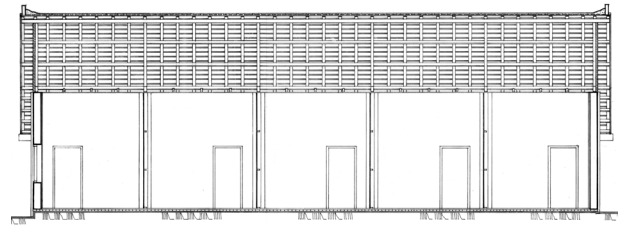
ຮູບດ້ານ ທິດຕາເວັນຕົກ ສ່ຽງໃຕ້ FAÇADE SUD - OUEST



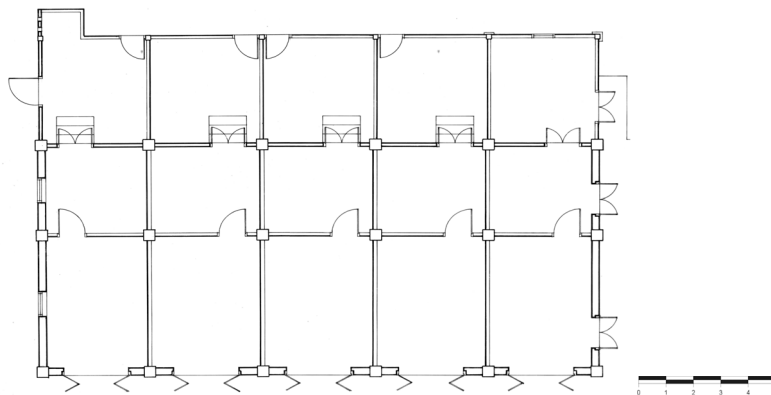
ຮູບດ້ານ ທິດຕາເວັນອອກ ສ່ຽງໃຕ້ FAÇADE SUD - EST



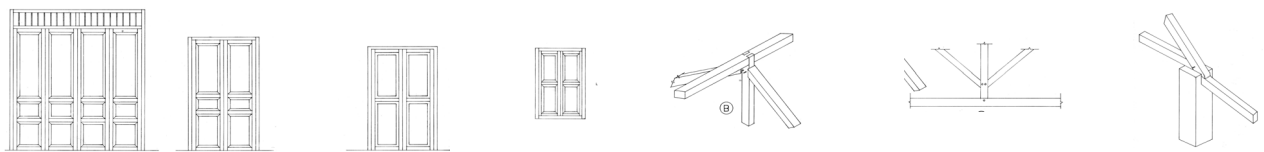
ຮູບຕັດທາງຂວາງ COUPE TRANSVERSALE



ຮູບຕັດທາງຍາວ COUPE LONGITUDINALE



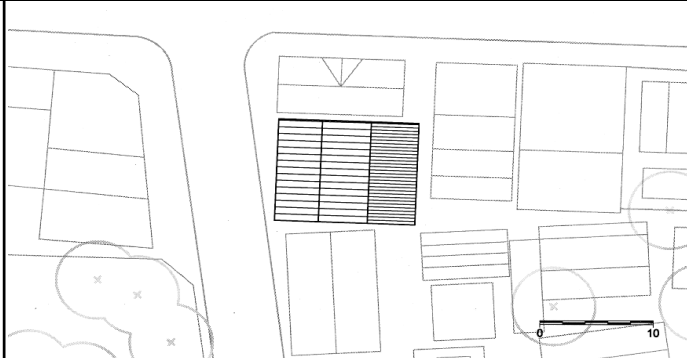
ແຜນຜັງ ຊັ້ນ 0 PLAN REZ DE CHAUSSEE



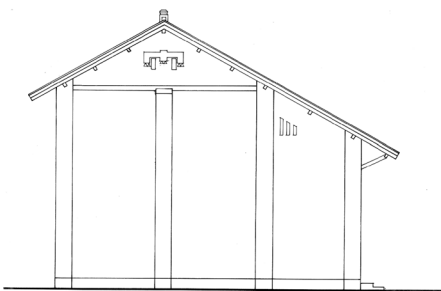
ຮູບຂະຫຍາຍ DETAILS



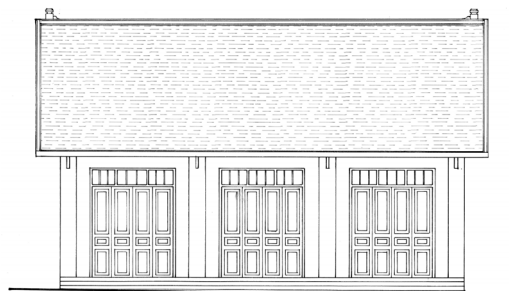
ແຜນຜັງບອກທີ່ຕັ້ງ PLAN DE LOCALISATION



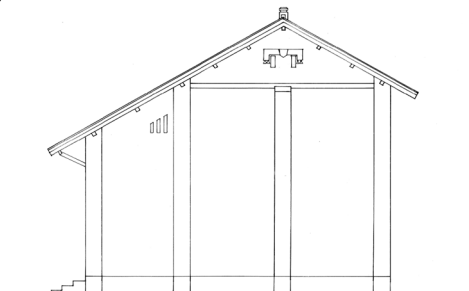
ແຜນຜັງລວມ PLAN DE MASSE



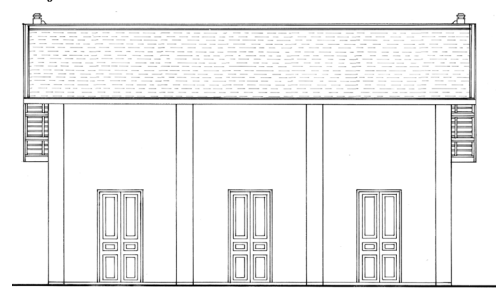
ຮູບດ້ານ ທິດຕາເວັນຕົກ ສ່ຽງເໜືອ FAÇADE NORD - OUEST



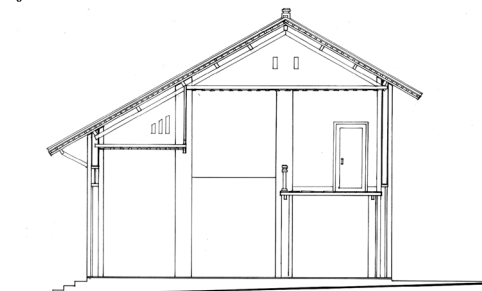
ຮູບດ້ານ ທິດຕາເວັນຕົກ ສ່ຽງໃຕ້ FAÇADE SUD - OUEST



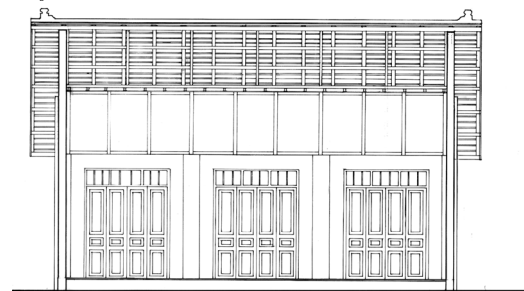
ຮູບດ້ານ ທິດຕາເວັນອອກ ສ່ຽງໃຕ້ FAÇADE SUD - EST



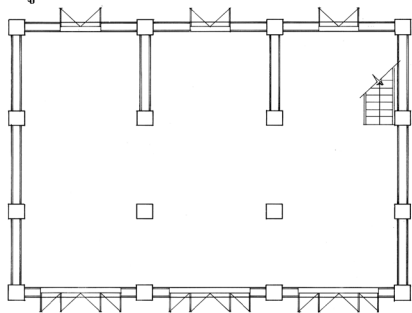
ຮູບດ້ານ ທິດຕາເວັນອອກ ສ່ຽງເໜືອ FAÇADE NORD - EST



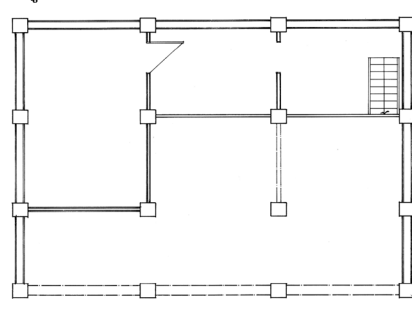
ຮູບຕັດຫາງຂວາງ COUPE TRANSVERSALE



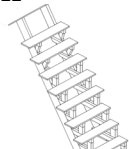
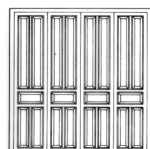
ຮູບຕັດຫາງຍາວ COUPE LONGITUDINALE



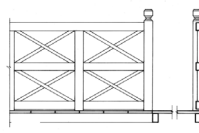
ແຜນຜັງ ຊັ້ນ 0 PLAN REZ DE CHAUSSEE



ແຜນຜັງ ຊັ້ນ 1 PLAN ETAGE



ຮູບຂະໜາຍ DETAILS



ພາກທີ 1 : ແບບສະຖາປັດຕະຍະກຳ

ຫ້ອງການມໍລະດົກ

La Maison du Patrimoine

ຫຼວງພະບາງ ເມືອງມໍລະດົກໂລກຂອງອົງການ ອຸຍແນສະໂກ

Luang Prabang, Ville du Patrimoine mondial de l'UNESCO

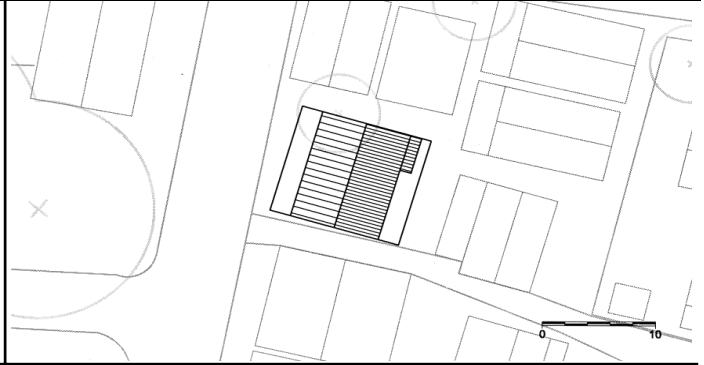
PARTIE 1: MODELES ARCHITECTURAUX

ແຜນຜັງປົກປັກຮັກສາ ແລະ ເຮັດໃຫ້ມີຄຸນຄ່າ

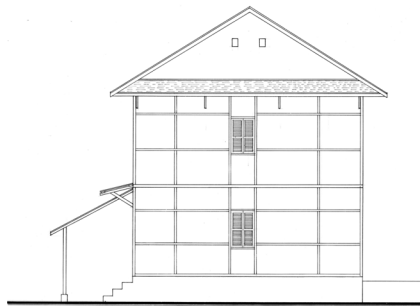
PLAN DE SAUVEGARDE ET DE MISE EN VALEUR



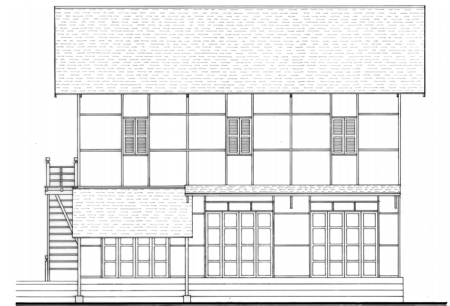
ແຜນຜັງບອກທີ່ຕັ້ງ PLAN DE LOCALISATION



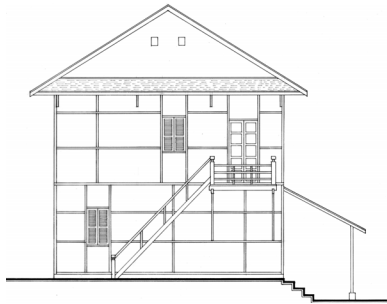
ແຜນຜັງລວມ PLAN DE MASSE



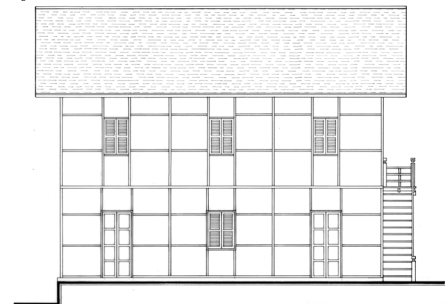
ຮູບຕ້ານ ທິດຕາເວັນອອກ ສ່ຽງໃຕ້ FAÇADE SUD - EST



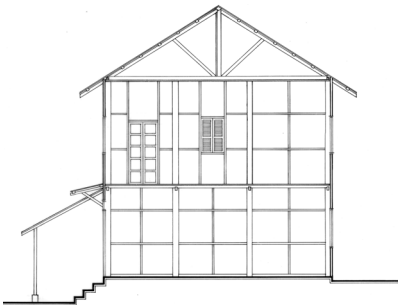
ຮູບຕ້ານ ທິດຕາເວັນຕົກ ສ່ຽງໃຕ້ FAÇADE SUD - OUEST



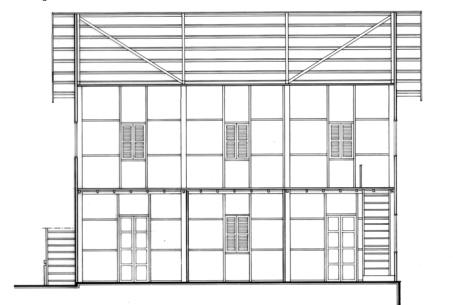
ຮູບຕ້ານ ທິດຕາເວັນຕົກ ສ່ຽງເໜືອ FAÇADE NORD - OUEST



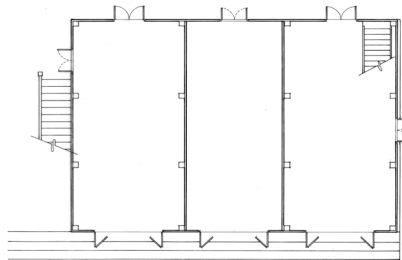
ຮູບຕ້ານ ທິດຕາເວັນອອກ ສ່ຽງເໜືອ FAÇADE NORD - EST



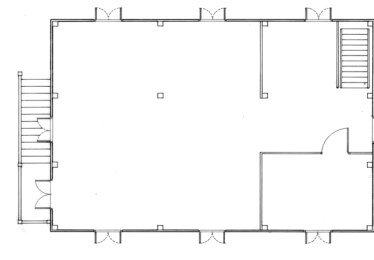
ຮູບຕັດທາງຂວາງ COUPE TRANSVERSALE



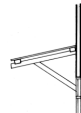
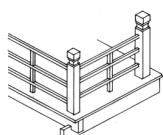
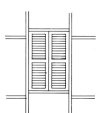
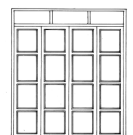
ຮູບຕັດທາງຍາວ COUPE LONGITUDINALE



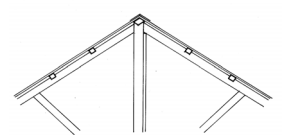
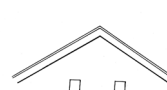
ແຜນຜັງ ຊັ້ນ 0 PLAN REZ DE CHAUSSEE

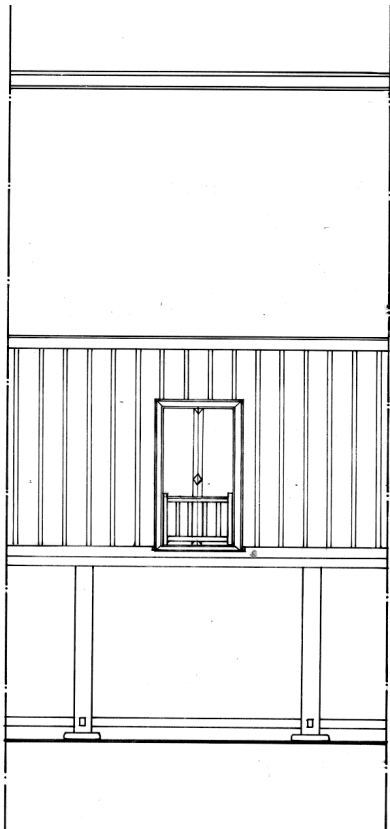


ແຜນຜັງ ຊັ້ນ 1 PLAN ETAGE

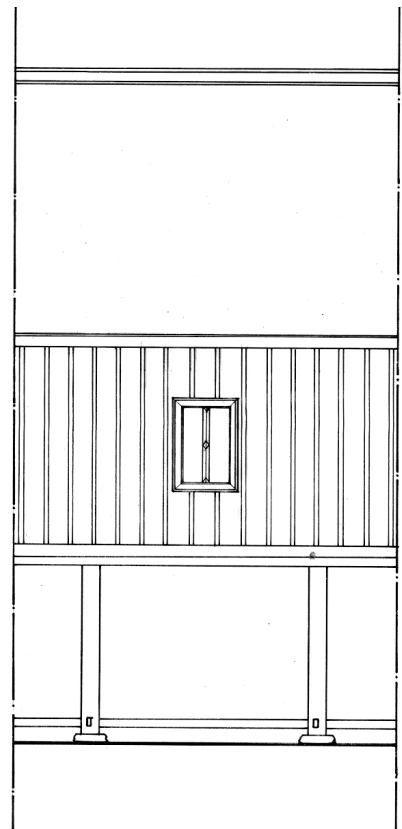


ຮູບຂະໜາຍ DETAILS

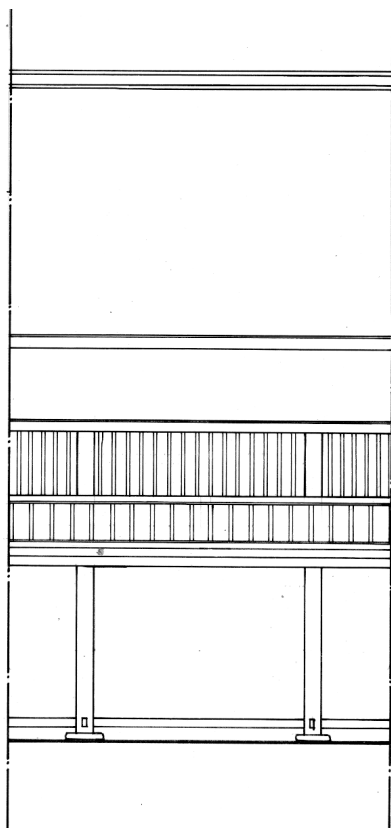




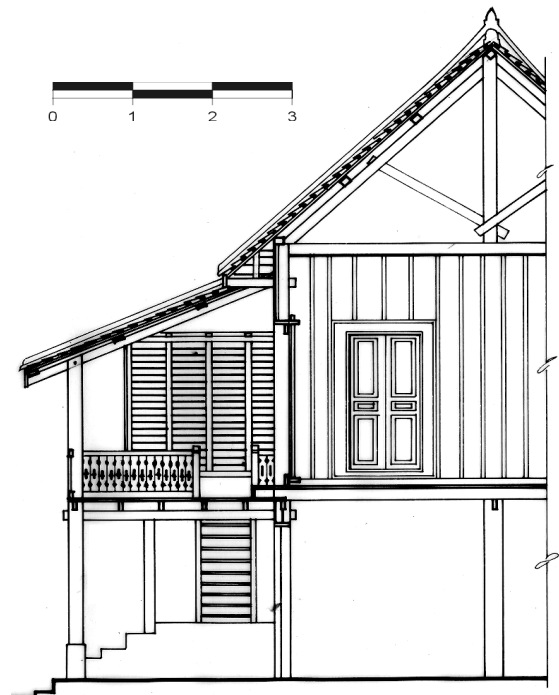
ປະເພດຫ້ອງມີປະຕູ
 TRAVEE TYPE DE MAISON EN BOIS AVEC PORTE



ປະເພດຫ້ອງມີປ້ອງຢ້ຽມ
 TRAVEE TYPE AVEC FENETRE



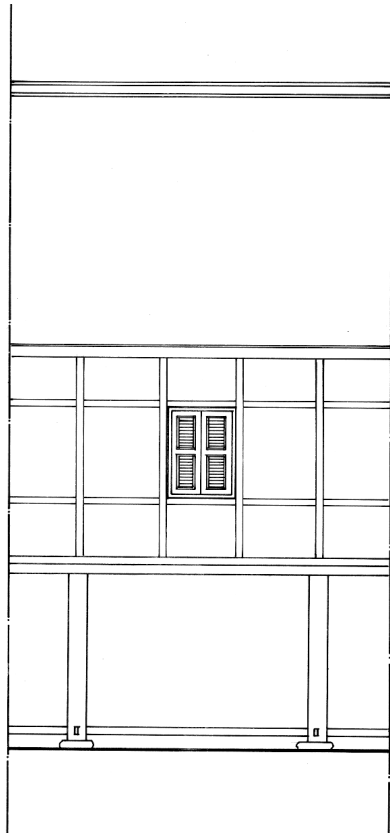
ປະເພດຫ້ອງມີເຊຍ
 TRAVEE TYPE AVEC VERANDA



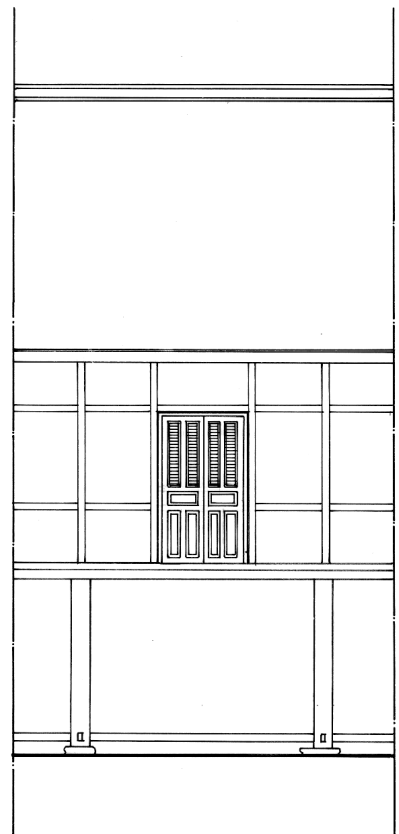
ຮູບຕັດປະເພດຫ້ອງມີເຊຍ
 COUPE TYPE SUR LA VERANDA

ພາກທີ 2 : ປະເພດຫ້ອງເຮືອນ

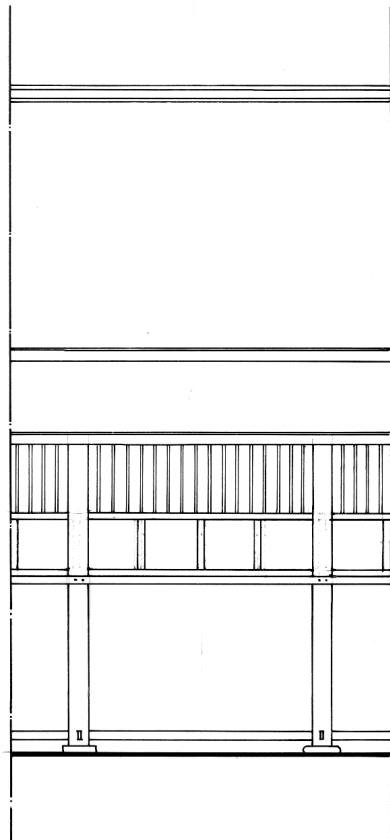
PARTIE 2 : TRAVEES TYPES



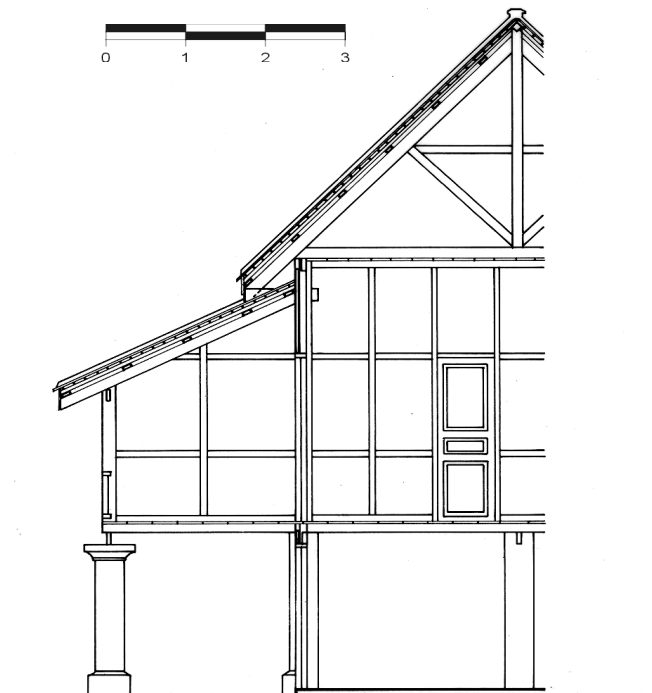
ປະເພດຫ້ອງມີປ້ອງຢ້ຽມ
 TRAVEE TYPE AVEC FENETRE



ປະເພດຫ້ອງມີປະຕູ
 TRAVEE TYPE AVEC PORTE



ປະເພດຫ້ອງມີເຊຍ
 TRAVEE TYPE AVEC VERANDA



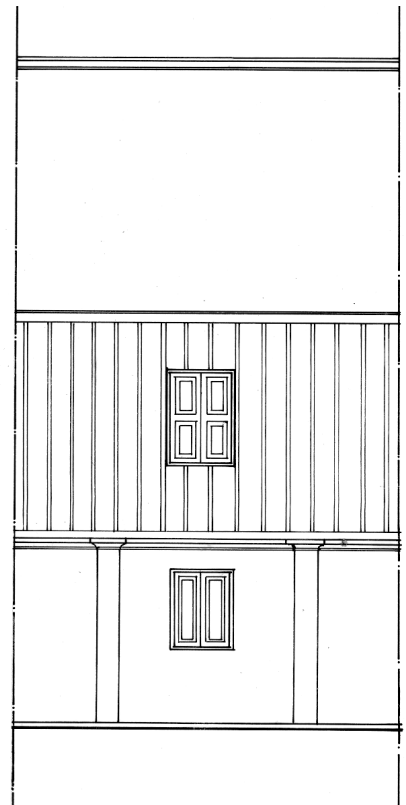
ຮູບຕັດປະເພດຫ້ອງມີເຊຍ
 COUPE TYPE SUR LA VERANDA

ພາກທີ 2 : ປະເພດຫ້ອງເຮືອນ

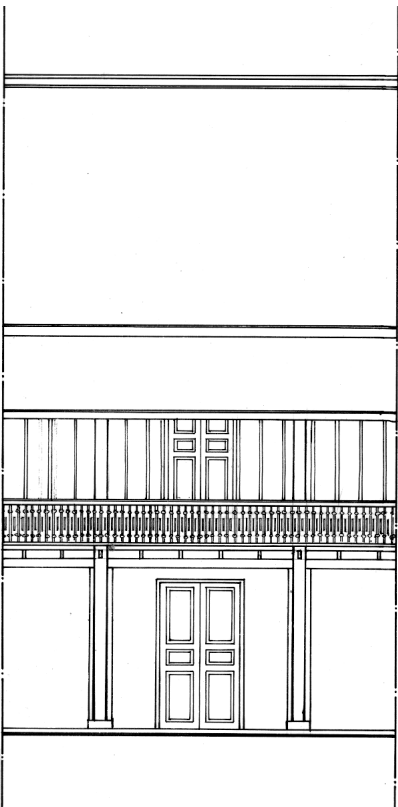
PARTIE 2 : TRAVEES TYPES



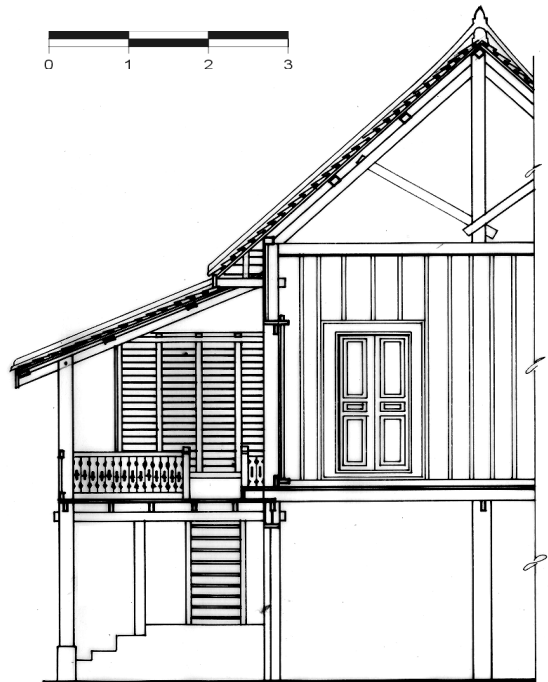
ປະເພດຫ້ອງມີປະຕູ
 TRAVEE TYPE AVEC PORTE



ປະເພດຫ້ອງມີປ້ອງຢ້ຽມ
 TRAVEE TYPE AVEC FENETRE



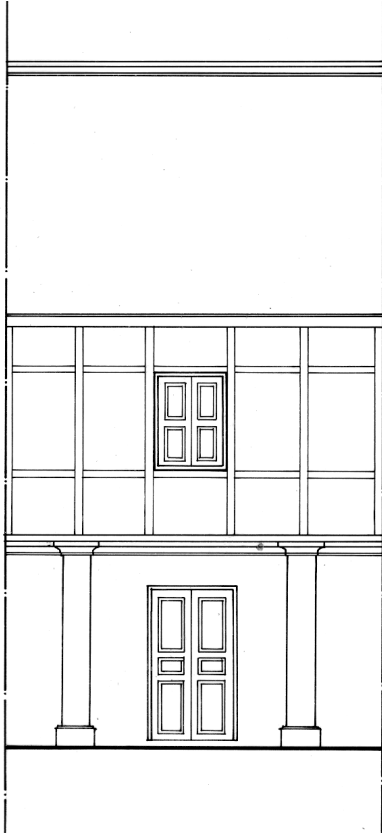
ປະເພດຫ້ອງມີເຊຍ
 TRAVEE TYPE AVEC VERANDA



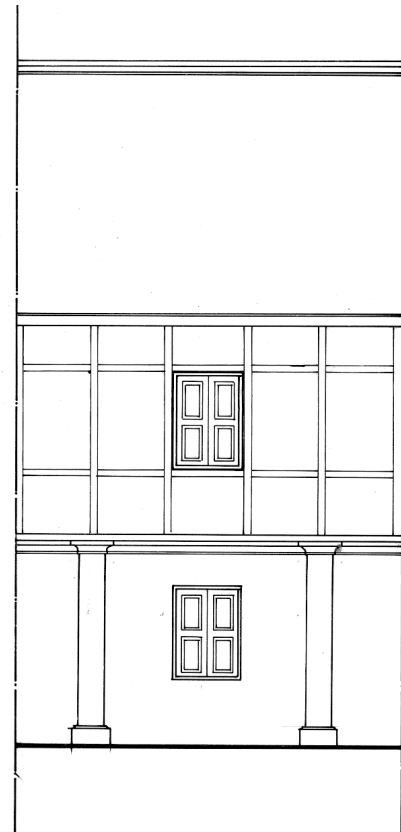
ຮູບຕັດປະເພດຫ້ອງມີເຊຍ
 COUPE TYPE SUR LA VERANDA

ພາກທີ 2 : ປະເພດຫ້ອງເຮືອນ

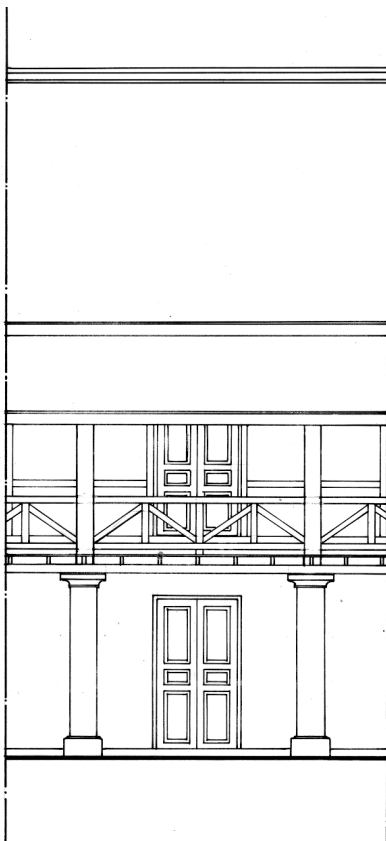
PARTIE 2 : TRAVEES TYPES



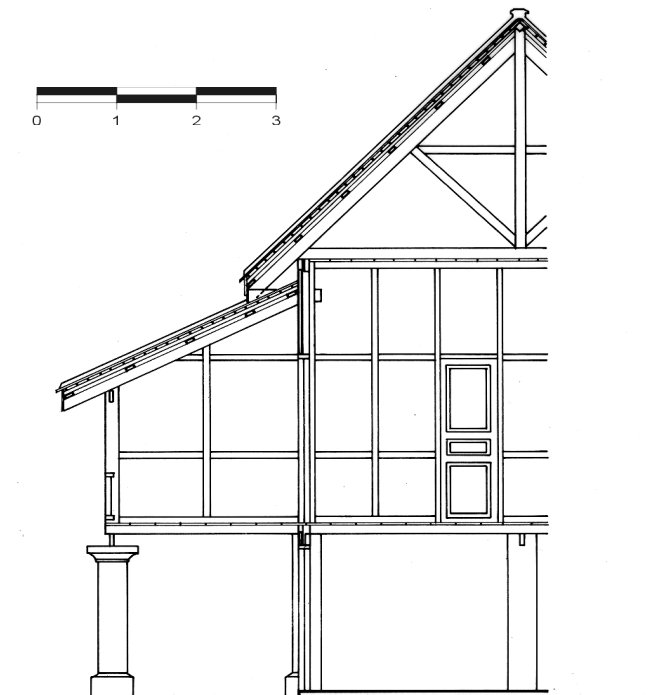
ປະເພດຫ້ອງມີປະຕູ
 TRAVEE TYPE AVEC PORTE



ປະເພດຫ້ອງມີປ້ອງຢ້ຽມ
 TRAVEE TYPE AVEC FENETRE



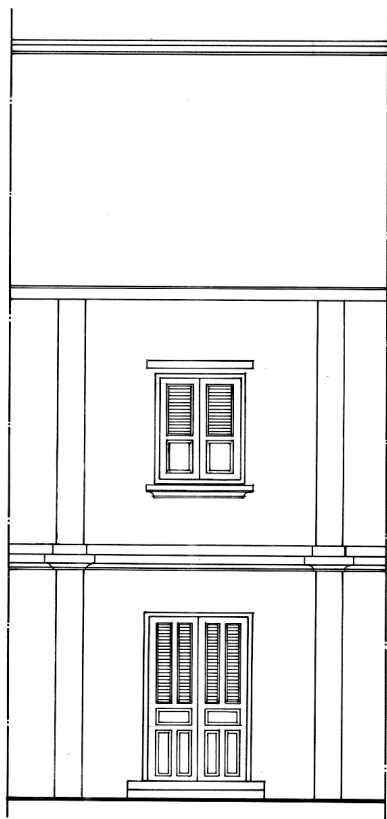
ປະເພດຫ້ອງມີເຊຍ
 TRAVEE TYPE AVEC VERANDA



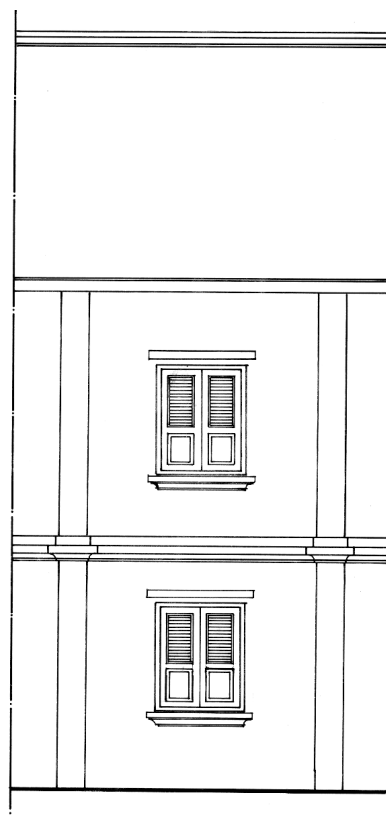
ຮູບຕັດປະເພດຫ້ອງມີເຊຍ
 COUPE TYPE SUR LA VERANDA

ພາກທີ 2 : ປະເພດຫ້ອງເຮືອນ

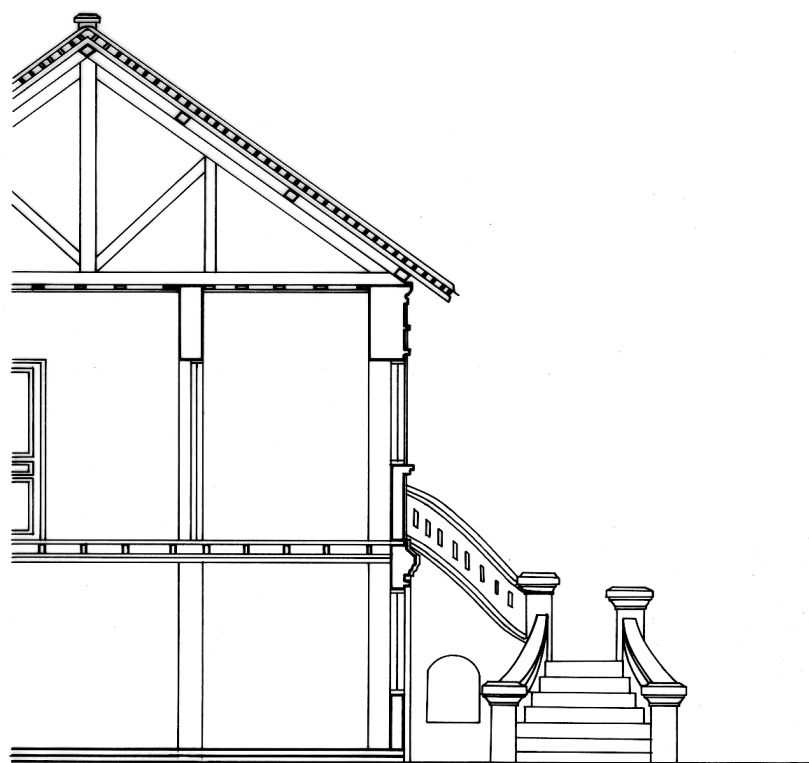
PARTIE 2 : TRAVEES TYPES



ປະເພດຫ້ອງມີປະຕູ
 TRAVEE TYPE AVEC PORTE



ປະເພດຫ້ອງມີປອງຢ້ຽນ
 TRAVEE TYPE AVEC FENETRE

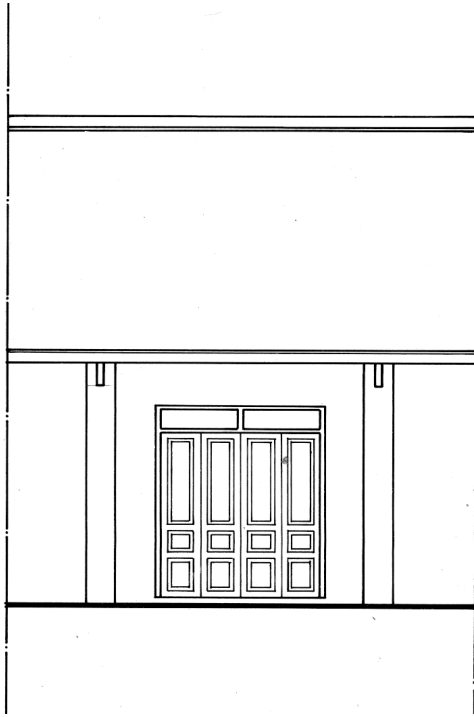


ຮູບຕັດປະເພດເຮືອນມີຂັ້ນໂຕ
 COUPE TYPE SUR L'ESCALIER

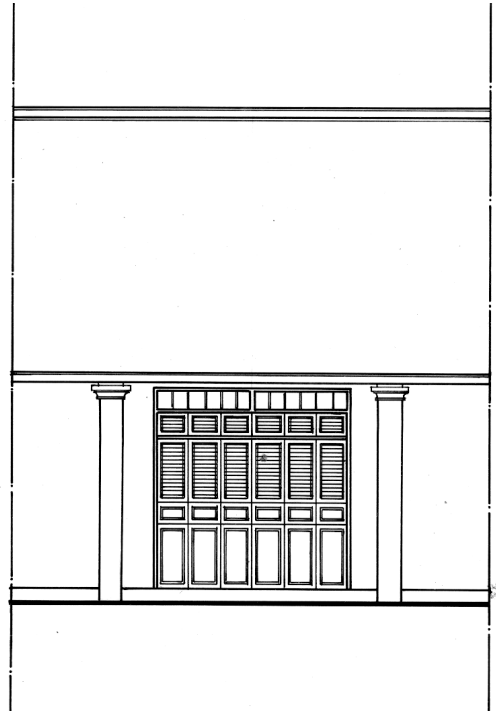


ພາກທີ 2 : ປະແພດຫ້ອງເຮືອນ

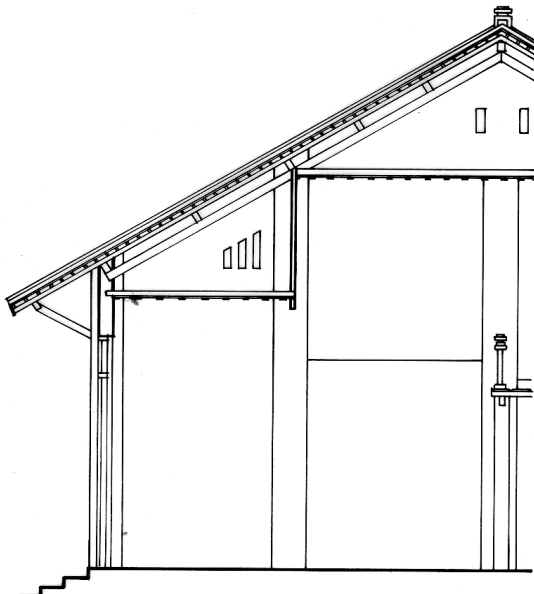
PARTIE 2 : TRAVEES TYPES



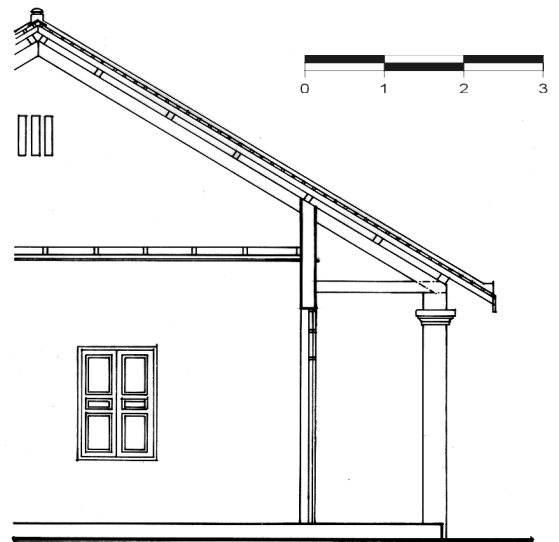
ປະເພດຫ້ອງມີປະຕູ
 TRAVEE TYPE AVEC PORTE



ປະເພດຫ້ອງມີປະຕູແລະເສົາຂອງລະບຽງ
 TRAVEE TYPE AVEC PORTE ET GALERIE



ຮູບຕັດປະເພດຫ້ອງມີປະຕູ
 COUPE TYPE AVEC PORTE



ຮູບຕັດປະເພດຫ້ອງມີປະຕູແລະເສົາຂອງລະບຽງ
 COUPE TYPE SUR LA GALERIE

ພາກທີ 2 : ປະເພດຫ້ອງເຮືອນ

PARTIE 2 : TRAVEES TYPES



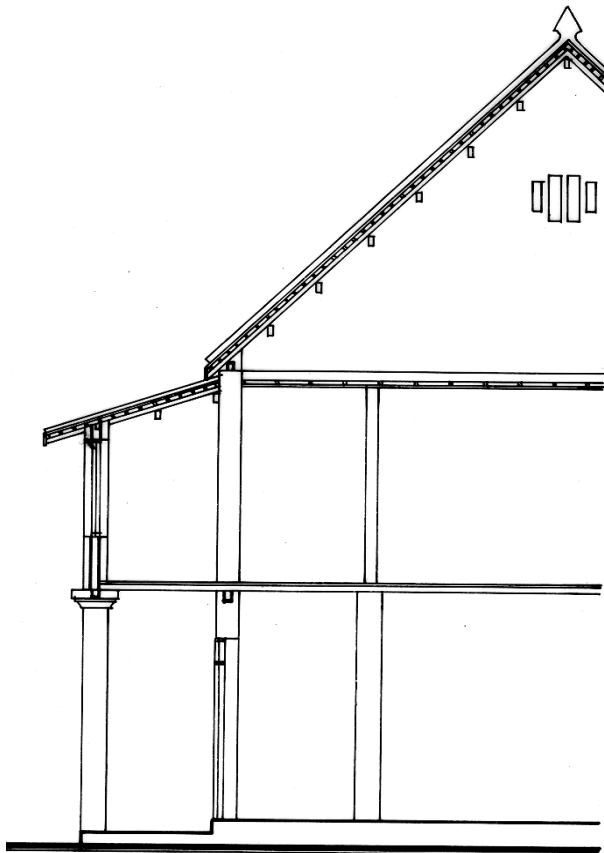
ປະເພດຫ້ອງມີເສົາກໍ່ຂອງເຊຍ

TRAVEE TYPE AVEC GALERIE, POTEAUX EN MAÇONNERIE



ປະເພດຫ້ອງມີເສົາກໍ່ແລະໄມ້ ຂອງເຊຍ

TRAVEE TYPE AVEC GALERIE, POTEAUX EN MAÇONNERIE ET BOIS



ຮູບຕັດປະເພດຫ້ອງມີເສົາກໍ່ແລະໄມ້ຂອງເຊຍ

COUPE TYPE SUR LA GALERIE, POTEAUX EN MAÇONNERIE ET BOIS



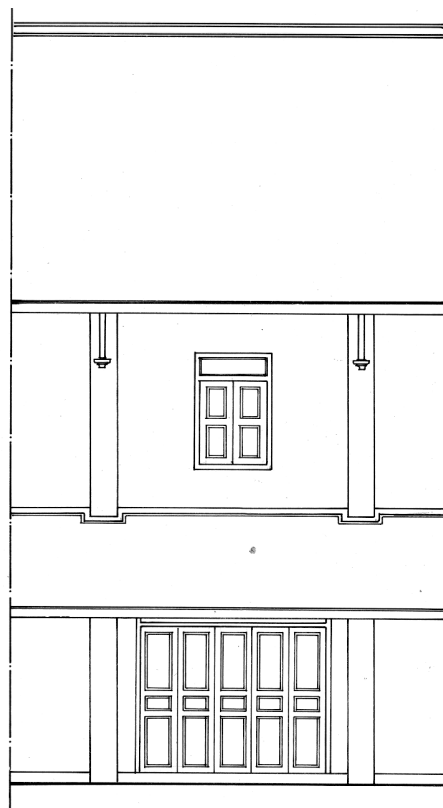
ພາກທີ 2 : ປະເພດຫ້ອງເຮືອນ

PARTIE 2 : TRAVEES TYPES



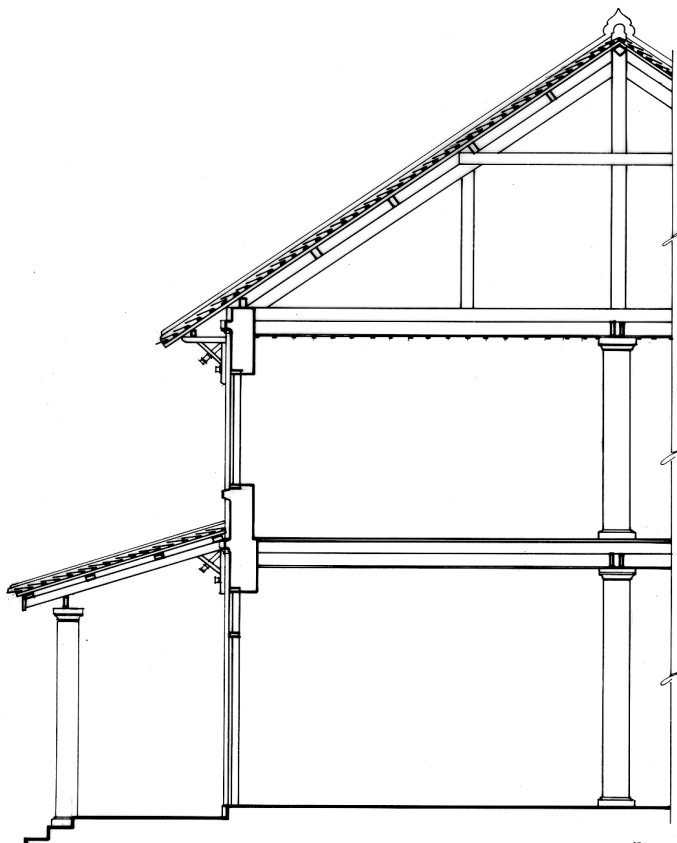
ປະເພດຫ້ອງມີແງບດ້ວຍເສົາໄມ້

TRAVEE TYPE AVEC TOITURE EN APPENTIS AVEC POTEAUX EN BOIS



ປະເພດຫ້ອງມີແງບດ້ວຍເສົາກໍ່

TRAVEE TYPE AVEC TOITURE EN APPENTIS ET POTEAUX EN MAÇONNERIE



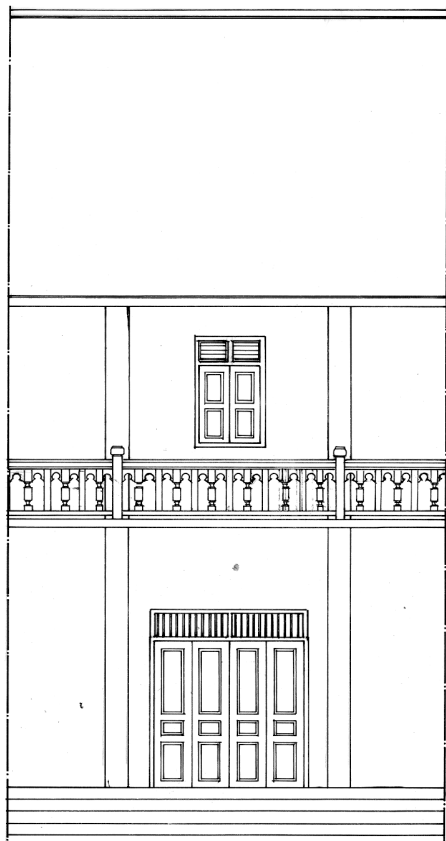
ຮູບຕັດປະເພດຫ້ອງມີແງບແລະເສົາກໍ່

COUPE TYPE SUR LA TOITURE EN APPENTIS POTEAUX EN MAÇONNERIE

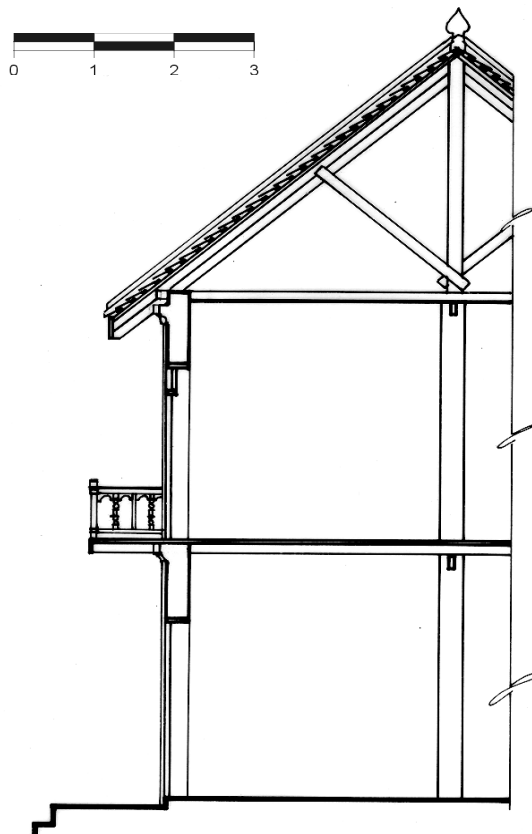


ພາກທີ 2 : ປະເພດຫ້ອງເຮືອນ

PARTIE 2 : TRAVEES TYPES



ປະເພດຫ້ອງມີລະບຽງດ້ວຍໄມ້
TRAVEE TYPE AVEC BALCON EN BOIS EN ENCORBELLEMENT



ຮູບຕິດປະເພດຫ້ອງມີລະບຽງດ້ວຍໄມ້
COUPE TYPE SUR LE BALCON EN BOIS EN ENCORBELLEMENT